



REPUBLIC OF KOSOVO
OFFICE OF THE PRIME MINISTER
KOSOVO AGENCY OF STATISTICS



A Population grid for the Republic of Kosovo

24-26 October 2012
EFGS Conference 2012 Prague

- INTRODUCTION
- OBJECTIVES OF A CENSUS GEOGRAPHY PROGRAM
- TECHNOLOGY AND METHODS
- KOSOVO GRID POPULATION MAP
- RESULTS
- THE ROLE OF CENSUS MAPPING FOR THE DISSEMINATION OF THE CENSUS DATA
- PLANNED FUTURE ACTIVITIES

Total Area: **10.908 km²**

Administrative Units: **37 Municipalities**

Settlements: **1467**

Resident population **1 780 021**

Population density **163.2 p/km²**



* The Cartography and GIS Section is part of the Kosovo Agency of Statistics. The mission of this Section is to Support departments in their Statistical surveys, to create sample frame, maps and to provide analysis of statistical data through the GIS system.

* The census has been executed in Kosovo last year and now the dissemination process has been starting to publish the results. Census mapping and GIS were used both in the preparation and in the enumeration process and currently will also strongly support the dissemination of the census results.

- **To support the census planning process (pre enumeration Phase)**
- **To support fieldwork operations (enumeration phase)**
- **To contribute to the statistical analysis and dissemination of the census data (post-enumeration phase)**

Main components and Cartographic materials which had been used preparation for census

❑ Raster data: digital colored orthophotos taken in 2004 & Satellite Imagine 2008
Satellite Imagine September 2010

❑ Vector layers:

- Administrative (Boundaries of municipalities, cadastral zones, Settlements)
- Statistical units (Enumeration Areas borders)
- Roads
- Buildings
- Points of interest
- Grid

❑ Attribute data:

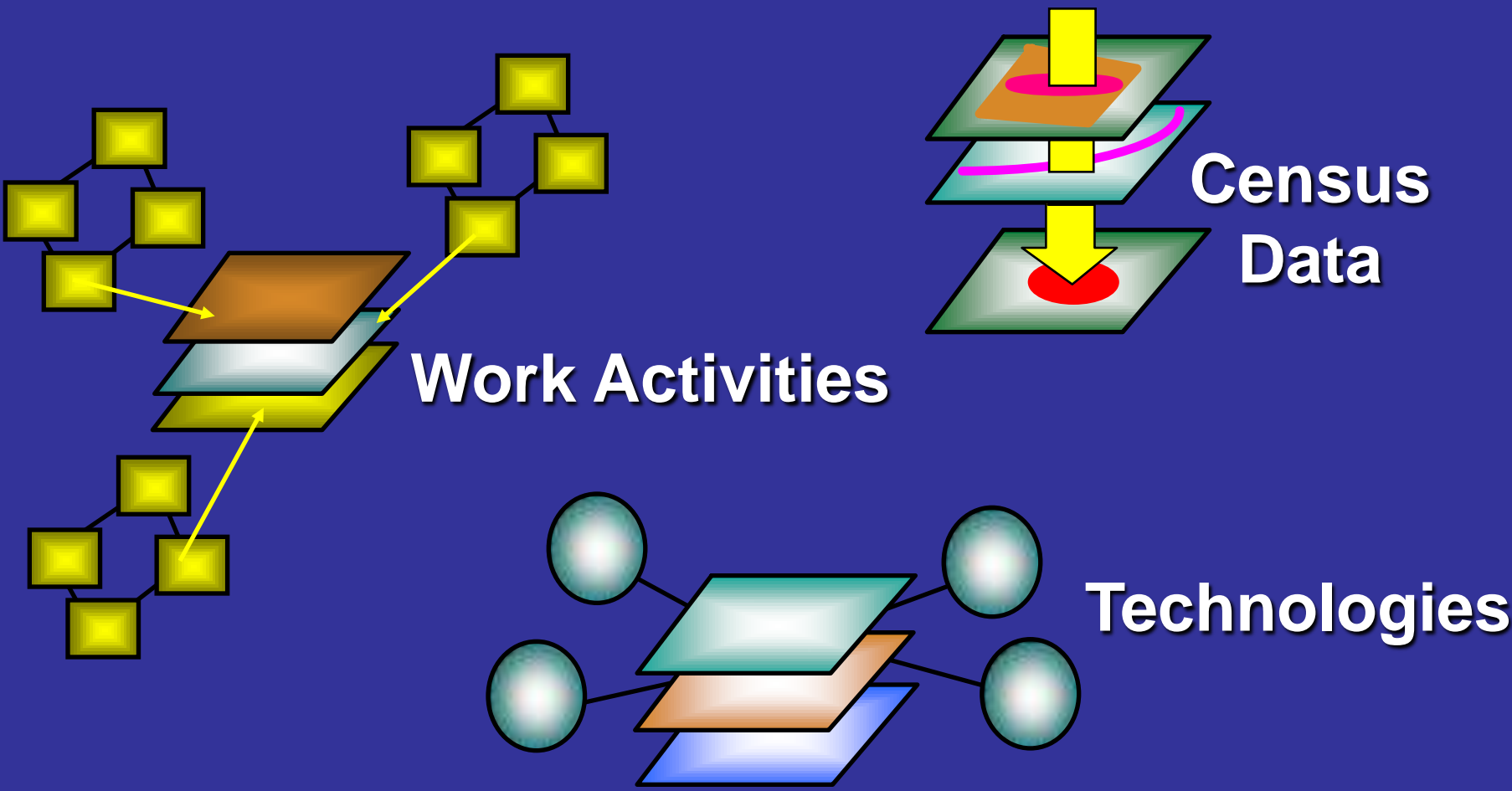
- Codes (Settlements, Enumeration Areas, Buildings etc).
- Estimates of the number of dwellings by administrative and statistical units
- Estimates of the number of households by administrative and statistical units
- Road names in urban areas

❑ Cartographic products:

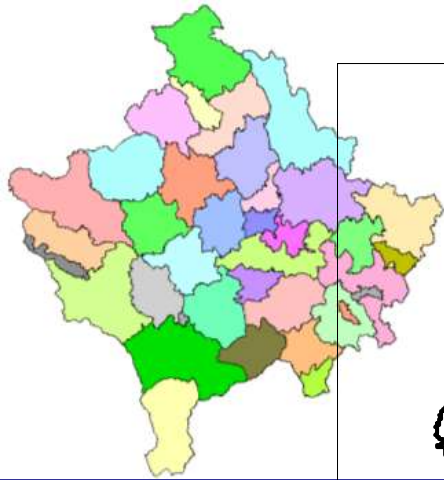
- Administrative maps
- EA maps in official languages

KAS currently uses ArcMap 10 version. (1 License)

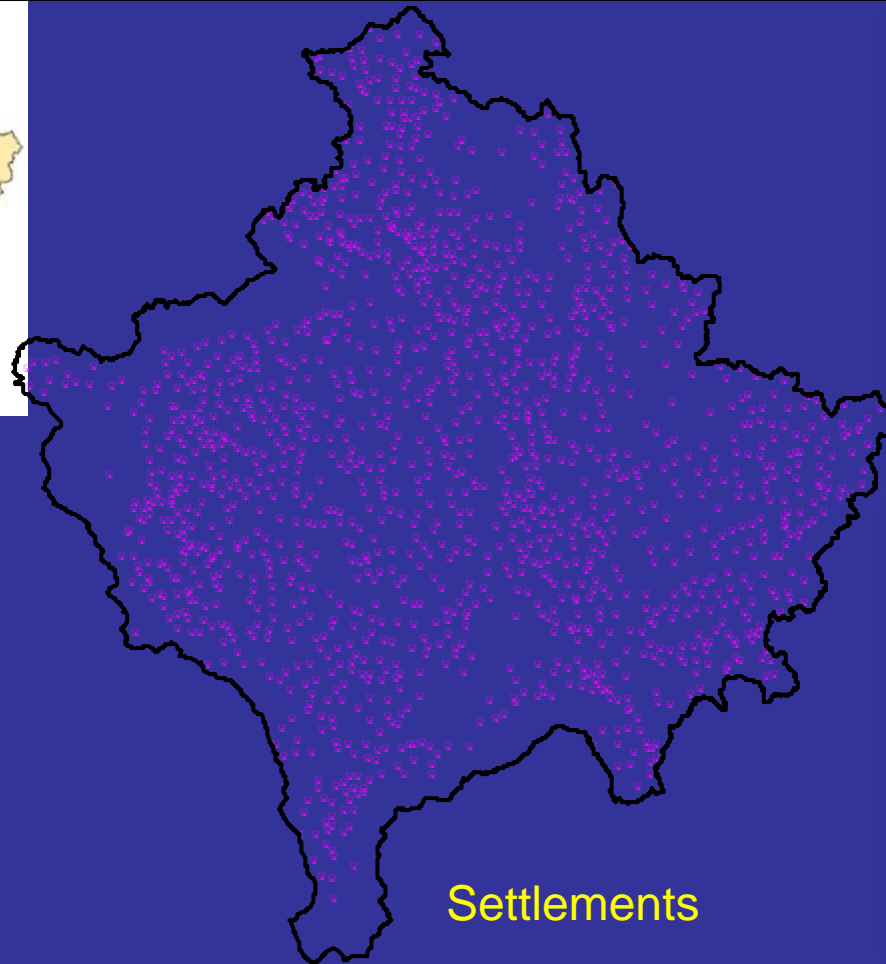
Map Info 7.8 (10 License)



GIS Unit is responsible for the production and update of the following geographic layers.



Municipality



Settlements

Buildings



EA Boundaries
and Code

Geographic layer

Municipalities

Settlements

Buildings

Enumeration Areas

N. of features

37

1,467

about 640,000

around 5,000

Geometry

polygons

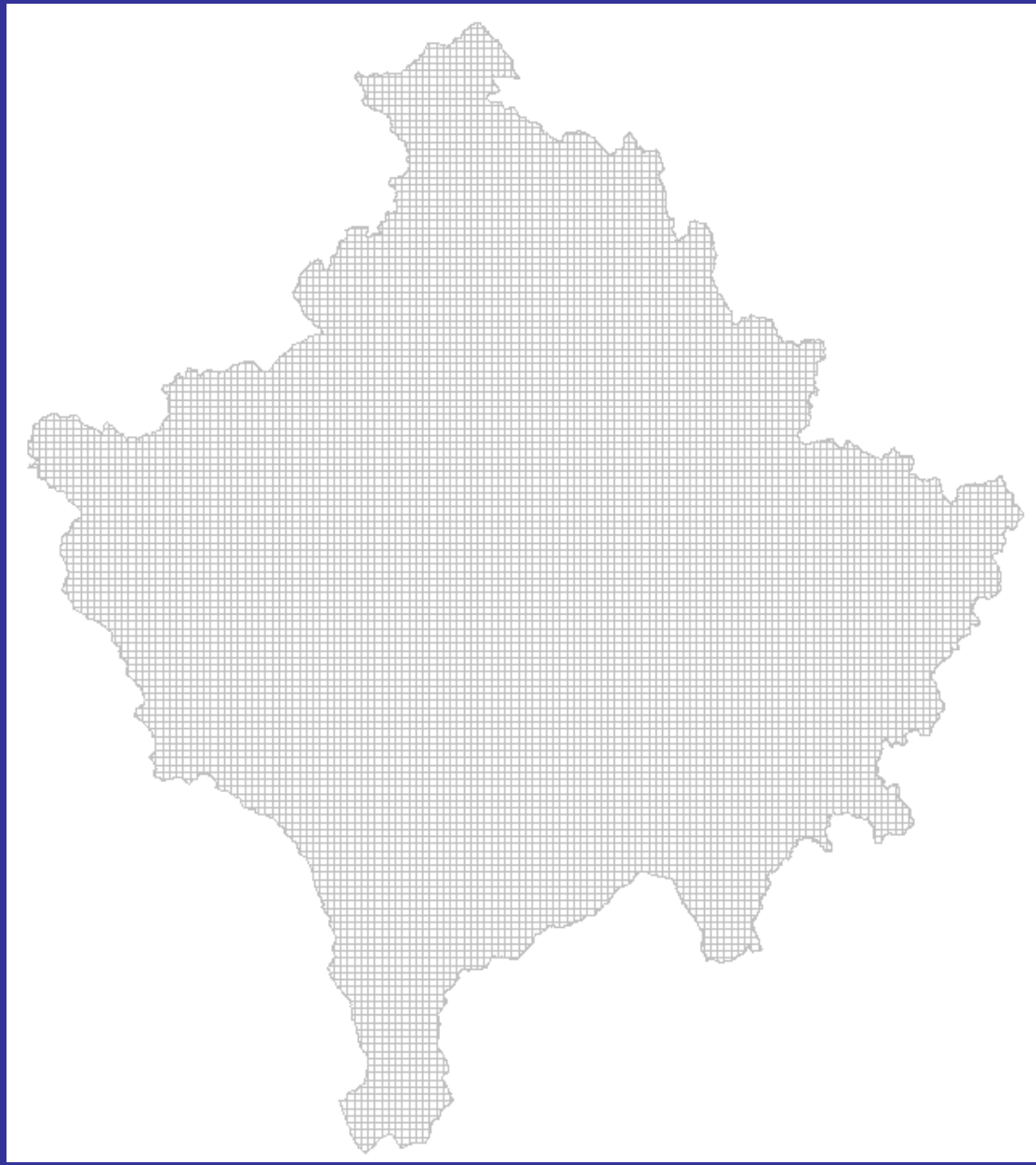
points

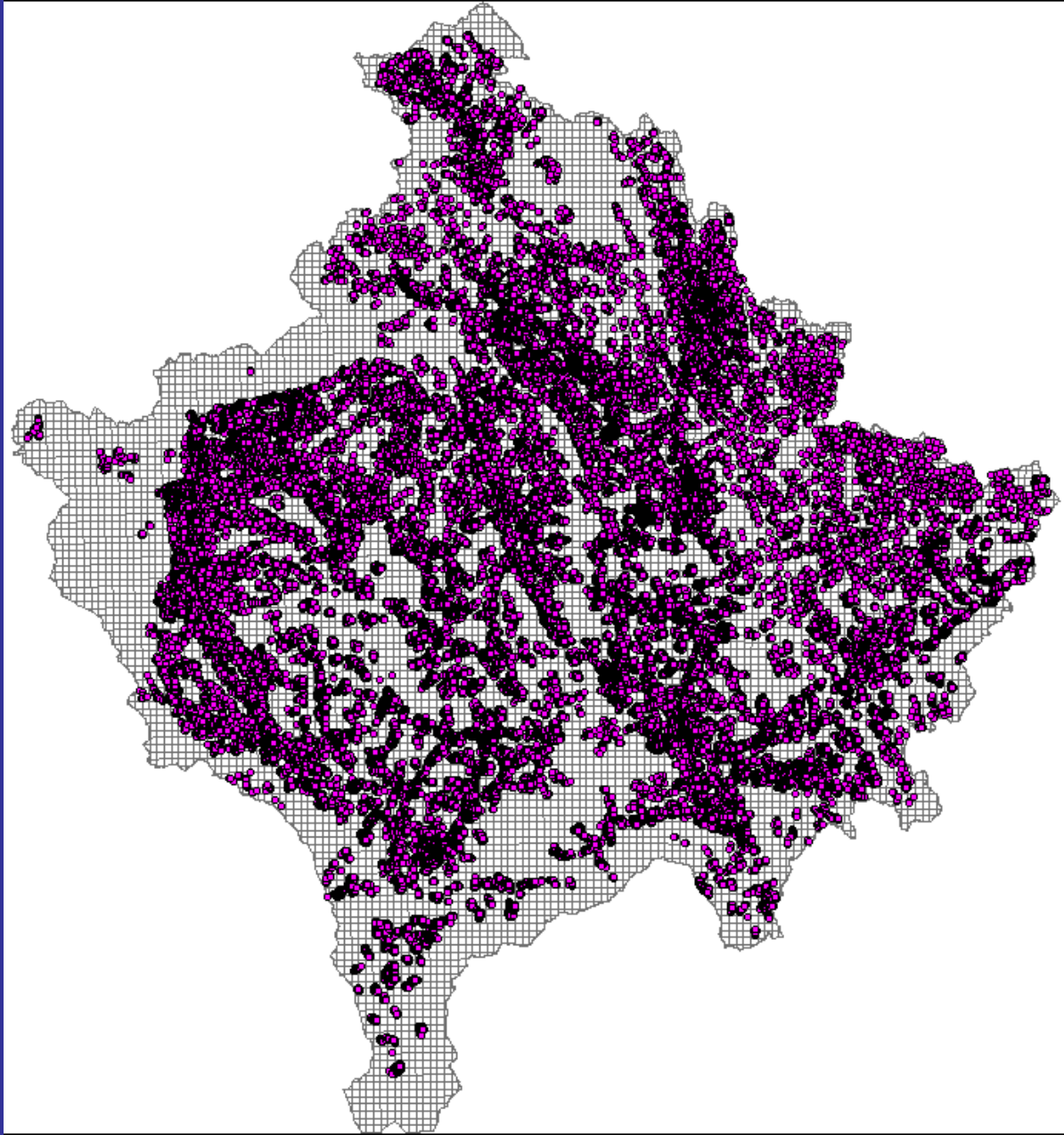
polygons and centroids (points)

polygons and centroids (points)

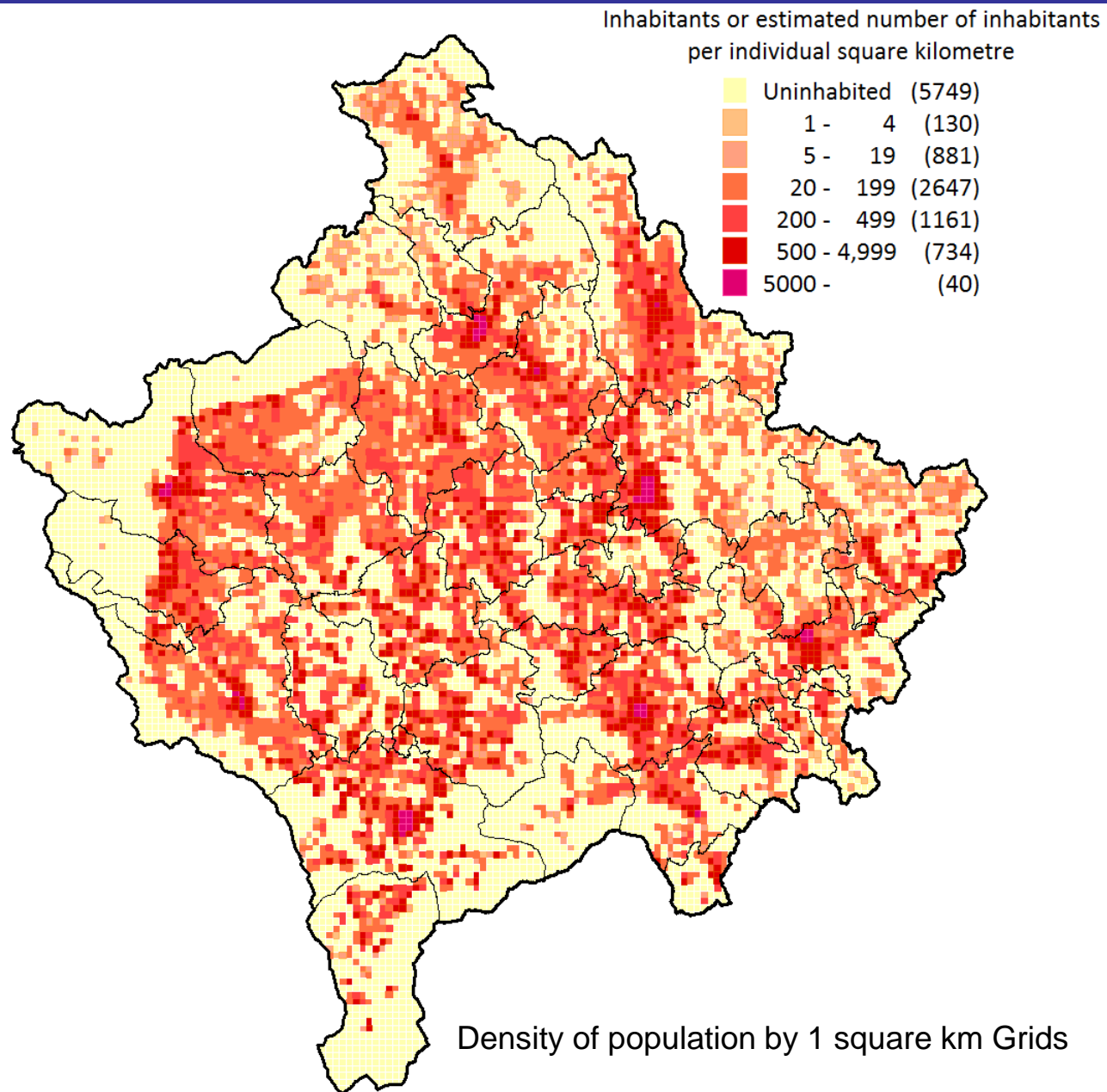


GRID



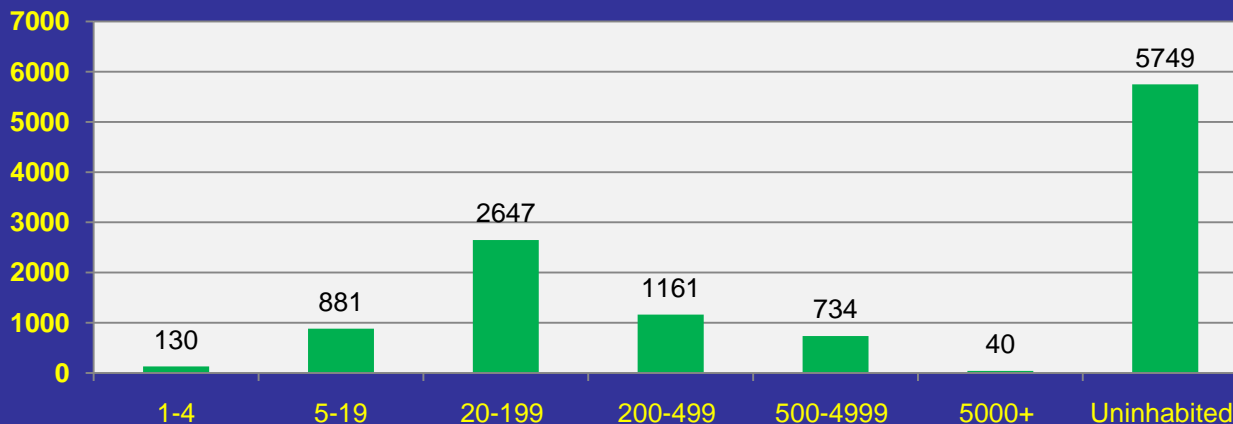


KOSOVO GRID POPULATION MAP 2011



Population per grid	Number of grids	% Number of Grids
1-4	130	1.1
5-19	881	7.8
20-199	2647	23.3
200-499	1161	10.2
500-4999	734	6.5
5000+	40	0.4
Uninhabited	5749	50.7
Total	11342	100.0

Number of grids



	Kosovo
Date	20/09/2012
Total area - km ²	10,908
Total resident population	1,780,021
Population - grid dataset	1,726,072
Population in grid data set - per cent	97%
Inhabited grid cells	5749
Inhabited grid cells - per cent of land areas	51
Max population in one grid cell	15834

data of population

- IDs of grids - data is aggregated in grid squares
- Co-ordinates - attribute data of buildings
- Joining - population to buildings
- Data selection - by the attribute data of population

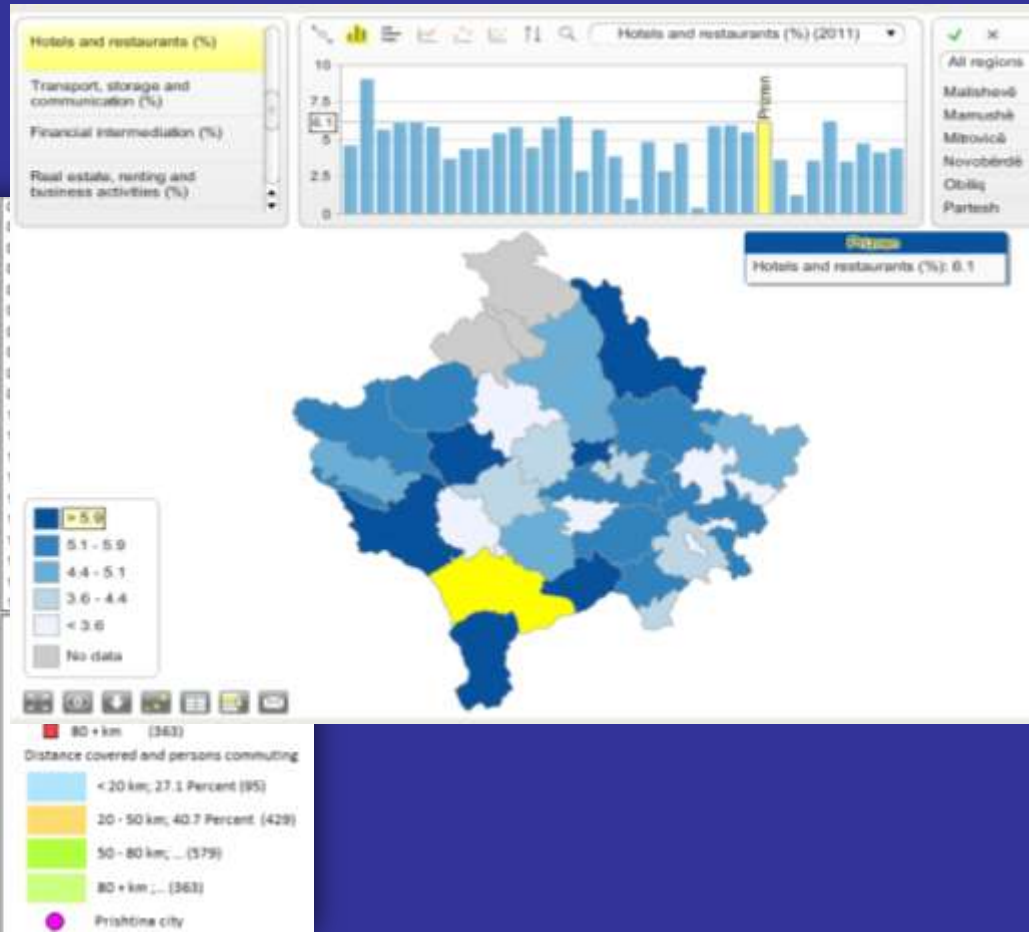
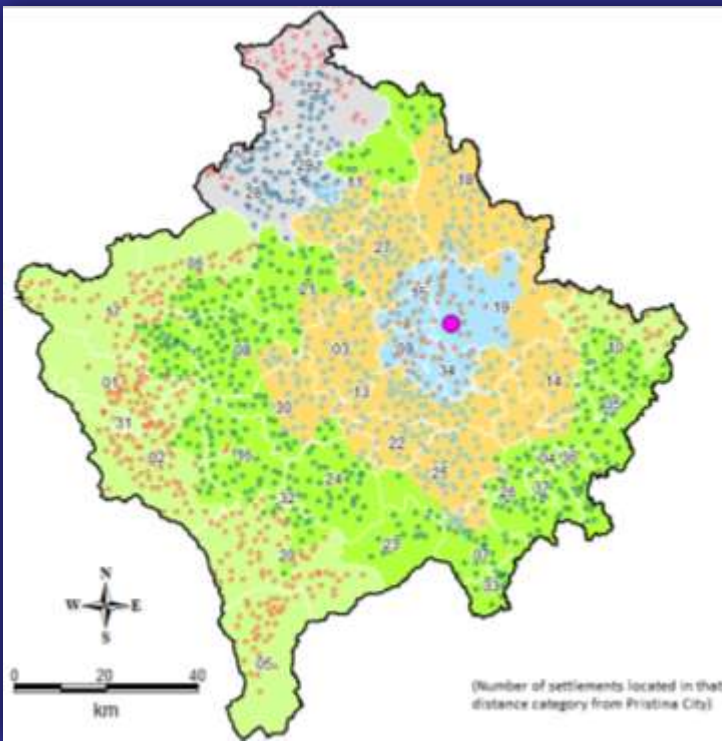
Thematic maps

* Maps communicate a concept or an idea or support textual information

- Maps are attractive
- Maps summarize large Amounts of information concisely

* Maps encourage comparisons

<http://esk.rks-gov.net/rekos2011>



- Connection of the vector base (GIS) with data from the Census
- Quality control, vector and attribute data
- Spatial analysis of Census data
- Supporting Agriculture census by maps
- Finalization of the sample framework which serves to the Agriculture Census logistics
- Preparation of the Census Atlas
- Production of thematic maps
- Dissemination of data through Web-GIS
- Cooperation with other Institutions for the definition and implementation of a NSDI

Thank you for your attention

Rrahman TARA, Kosovo Agency of Statistics
rrahman.tara@rks-gov.net

Idriz SHALA, Kosovo Agency of Statistics
idriz.shala@rks-gov.net