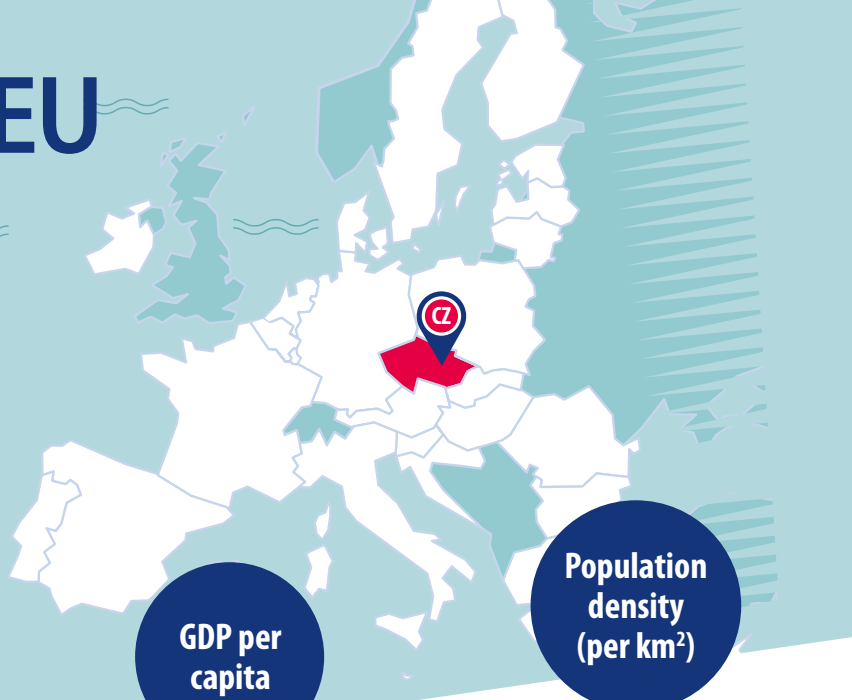


Czechia in the EU



Share in EU area

1.9%
78 871 km²

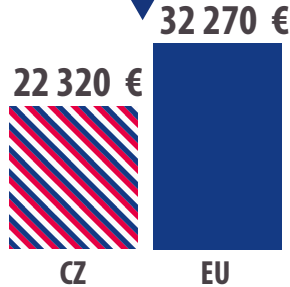
Share in EU population

2.4%
10.7 million inhabitants

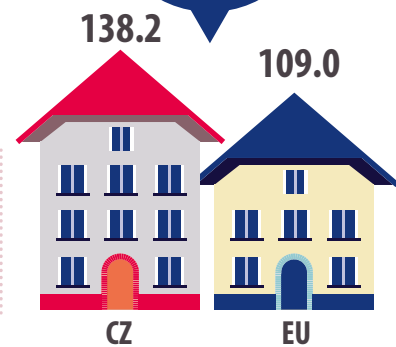
Share in EU GDP

1.7%

GDP per capita



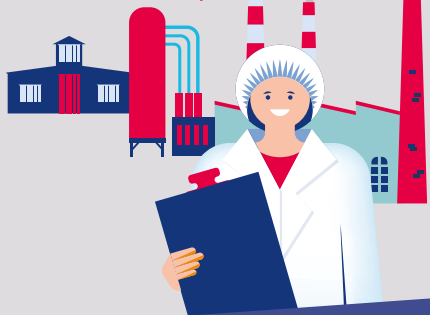
Population density (per km²)



Did you know that...



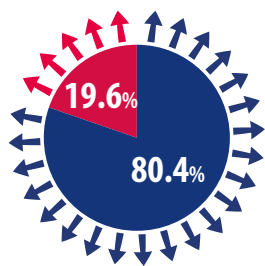
Czechia has the **highest proportion** of people **employed in industry**



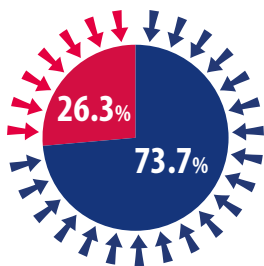
Czechia is the **largest EU exporter** of **live carp**



Exports of goods

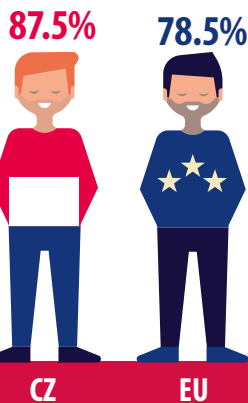


Imports of goods

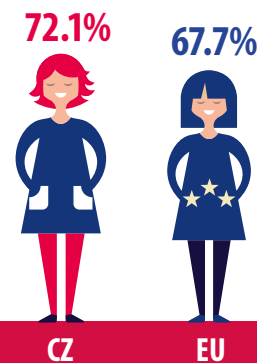


● Inside EU
● Outside EU

Employment rate, men



Employment rate, women



Czechia in the EU

On the occasion of Czechia's Presidency of the Council of the European Union (from 1st July 2022), Eurostat, the statistical office of the European Union, releases some indicators and infographics to show Czechia in comparison with the European Union

July 2022

Indicator	Czechia	EU
Economy		
Government surplus/deficit (% of GDP)	- 5.9	- 4.7
Government gross debt (% of GDP)	41.9	88.1
GDP per capita in PPS (EU = 100)	92.0	100.0
Tax to GDP ratio	36.1	41.3
Annual average inflation rate (HICP)	3.3	2.9
Investment (gross fixed capital formation as % of GDP)	25.5	22.0
Weight of manufacturing in the economy (value added of manufacturing as % of GDP)	22.5	14.9
Population and social conditions		
Share of population aged 65 or over (%)	20.2	20.8
Share of population under 15 (%)	16.1	15.1
Fertility rate (children per woman)	1.71	1.50
Unemployment rate (total)	2.8	7.0
Unemployment rate (less than 25 years)	8.2	16.6
Risk-of-poverty or social exclusion (% of population)	11.9	21.5
Education		
Tertiary educational attainment total (% of persons aged 30-34)	36.5	41.6
Tertiary educational attainment women (% of persons aged 30-34)	45.0	47.0
Tertiary educational attainment men (% of persons aged 30-34)	28.6	36.3
Early leavers from education (% of persons aged 18-24 years)	6.4	9.7
Science and technology		
R&D expenditure (% of GDP)	1.99	2.32
Employment in high- and medium-high technology manufacturing (%)	11.3	6.1
Environment and energy		
Greenhouse gas emissions including international aviation and indirect CO ₂ emissions (% reduction since 1990) – Source: EEA	- 28.2	- 25.9
Share of renewables in final energy consumption	17.3	22.1
Energy dependency (share of imports in energy consumption)	38.9	57.5

Based on annual data available on 18 May 2022

ec.europa.eu/eurostat

 @EU_Eurostat

 @EurostatStatistics

 @EU_Eurostat

