

CONTENTS

Czech Republic geography in 2017.....	5
Comparisons of EU countries in 2017.....	6
Municipalities of the Czech Republic as at 31 December 2017	11
Regions of the Czech Republic.....	11
Regional comparisons in 2017.....	12
Population.....	16
Gross domestic product.....	18
Finance.....	19
External trade.....	20
Standard of living.....	22
Consumption of the population.....	23
Employment and wages.....	24
Environment.....	25
Agriculture	26
Agriculture and forestry.....	27
Industry.....	28
Industry and energy.....	29
Construction	30
Tourism.....	31
Communication technologies	32
Information society	33
Science and research.....	34
Education.....	35
Health	36
Social security	37
Culture.....	38
Organizational structure of the national economy	39
Justice, crime, accidents.....	40
Selected CZSO publications	41

Calculations in the tables are based on non-rounded figures
(including totals).

Czech Statistical Office

Na padesátém 81
100 82 Prague 10

ISBN 978-80-250-2869-8
Code: 320203-18

CZECH REPUBLIC GEOGRAPHY IN 2017

GDP per capita	CZK 476 432, current prices
Inflation rate	2.5%
Share of unemployed persons as at 31 December	3.77%
Average monthly gross wage of employees in the national economy ¹⁾	CZK 29 496
Average monthly full old-age pension as at 31 December	CZK 11 866

¹⁾ FTE employees, preliminary data from a quarterly survey.

Largest municipality (as at 31 December)	PRAHA	1 294 513 inhabitants	Capital City
Smallest municipality (as at 31 December)	VYSOKÁ LHOTA	15 inhabitants	Pelhřimov District
Highest settlement	FILIPOVA HUŤ	Altitude 1 093 m	Klatovy District
Lowest settlement	HŘENSKO	Altitude 130 m	Děčín District
Highest point	Mount SNĚŽKA	Altitude 1 602 m	Krkonoše Mountains
Lowest point	Discharge of the LABE River at Hřensko	Altitude 115 m	Děčín District
Deepest chasm	HRANICKÁ Abyss	473.5 m	Přerov District
Largest national park	ŠUMAVA National Park	680.6 km ²	Šumava Mountains
Largest protected landscape area	BESKYDY PLA	1 160 km ²	Beskydy Mountains
Longest river	VLTAVA River	433 km	Bohemia
Largest catchment area	LABE River catchment	51 103.9 km ²	Bohemia
Largest natural lake maximum depth	Lake ČERNÉ	18.4 ha 39.8 m	Šumava Mountains
Largest manmade lake maximum depth	Lake ROŽMBERK	489 ha 6.2 m	Jindřichův Hradec District
Largest dam reservoir maximum depth	Dam Lake LIPNO	4 870 ha 20 m	Šumava Mountains
Hottest thermal spring	VŘÍDLO Spring	72 °C	Karlovy Vary
Highest daily maximum air temperature	3 August	38.3 °C	Strážnice Hodonín District
Lowest daily minimum air temperature	7 January	-34.6 °C	Rokytská Peat Bog Klatovy District
Highest daily precipitation	29 June	120.4 mm	Praha Zadní Kopanina Praha District
Deepest snow cover	18 January	166 cm	Labská bouda Trutnov District

COMPARISONS OF EU COUNTRIES IN 2017*)

	EU28	Belgium	Bulgaria	Czech Republic	Denmark
GDP per capita in PPS, EU28 = 100	100	117	49	89	125
Real GDP growth rate	2.4	1.7	²⁾ 3.6	4.3	2.3
Real labour productivity per person employed, 2010 = 100 (GDP in PPS per person employed)	105.7	102.6	²⁾ 118.8	109.8	105.4
General government gross debt (% of GDP)	81.6	103.1	25.4	34.6	36.4
Gross domestic expenditure on R&D (GERD) (% of GDP; in 2016)	²⁾ 2.03	²⁾ 2.49	0.78	²⁾ 1.68	³⁾ 2.87
Inflation rate	1.7	2.2	1.2	2.4	1.1
Comparative price levels, EU28 = 100	100.0	110.7	48.4	69.0	141.5
Employment rate (age group 15+ years)	53.5	50.0	51.9	58.5	58.7
Unemployment rate (age group 15–74 years)	7.6	7.1	6.2	2.9	5.7
Long-term unemployment rate (12+ months)	3.4	3.5	3.4	1.0	1.3
At-risk-of-poverty rate after social transfers ¹⁾ (in 2016)	17.3	15.5	22.9	9.7	11.9
Public expenditure on education (% of GDP; in 2015)	.	6.43	3.93	3.79	.
Total fertility rate (in 2016)	^{2,3)} 1.60	1.68	1.54	1.63	1.79
Life expectancy at birth (years; in 2016)					
Males	78.2	79.0	71.3	76.1	79.0
Females	83.6	84.0	78.5	82.1	82.8
Municipal waste generated (kg per capita; in 2016)	³⁾ 483	420	404	339	777
Share of energy from renewable sources (in 2016)	17.0	8.7	18.8	14.9	32.2
Industrial production index (2010 = 100)	³⁾ 109.1	²⁾ 112.5	²⁾ 117.5	126.2	109.0

*) Source: Eurostat; EU28 = European Union (28 countries); data in % unless otherwise stated.

¹⁾ The share of persons with an equivalised disposable income below the risk-of-poverty threshold, which is set at 60% of the national median equivalised disposable income (after social transfers).

COMPARISONS OF EU COUNTRIES IN 2017*)

Estonia	Finland	France	Croatia	Ireland	Italy	Cyprus	Lithuania
77	109	104	61	184	96	84	78
4.9	2.8	²⁾ 2.2	2.9	7.2	1.5	²⁾ 3.9	3.8
109.4	102.6	²⁾ 104.7	⁴⁾ 109.9	141.5	98.0	²⁾ 101.7	117.8
9.0	61.4	97.0	78.0	68.0	131.8	97.5	39.7
1.28	2.75	²⁾ 2.25	0.85	³⁾ 1.18	²⁾ 1.29	²⁾ 0.50	0.85
3.7	0.8	1.2	1.3	0.3	1.3	0.7	3.7
78.5	122.2	108.8	67.0	125.4	101.1	88.5	64.6
60.0	53.8	50.5	45.8	57.8	44.2	54.8	56.3
5.8	8.6	9.4	11.1	6.7	11.2	11.1	7.1
1.9	2.1	4.2	4.6	3.0	6.5	4.5	2.7
21.7	11.6	13.6	19.5	16.6	20.6	16.1	21.9
.	6.75	5.47	.	.	4.10	6.40	4.12
1.60	1.57	²⁾ 1.92	1.42	1.81	1.34	1.37	1.69
73.3	78.6	79.5	75.0	79.9	81.0	80.5	69.5
82.2	84.4	85.7	81.3	83.6	85.6	84.9	80.1
376	504	511	403	.	497	³⁾ 640	444
28.8	38.7	16.0	28.3	9.5	17.4	9.3	25.6
144.7	99.4	103.5	101.9	²⁾ 156.4	96.7	²⁾ 86.2	131.6

²⁾ Preliminary data.

³⁾ Estimate.

⁴⁾ Definition differs.

COMPARISONS OF EU COUNTRIES IN 2017^{*)}

	Latvia	Luxem- bourg	Hungary	Malta
GDP per capita in PPS, EU28 = 100	67	253	68	96
Real GDP growth rate	4.5	2.3	4.0	6.4
Real labour productivity per person employed, 2010 = 100 (GDP in PPS per person employed)	120.2	101.0	102.7	110.5
General government gross debt (% of GDP)	40.1	23.0	73.6	50.8
Gross domestic expenditure on R&D (GERD) (% of GDP; in 2016)	0.44	²⁾ 1.24	1.21	²⁾ 0.61
Inflation rate	2.9	2.1	2.4	1.3
Comparative price levels, EU28 = 100	72.4	126.9	62.0	82.3
Employment rate (age group 15+ years)	55.5	56.0	53.9	54.0
Unemployment rate (age group 15–74 years)	8.7	5.6	4.2	4.6
Long-term unemployment rate (12+ months)	3.3	2.1	1.7	1.8
At-risk-of-poverty rate after social transfers ¹⁾ (in 2016)	21.8	16.5	14.5	16.5
Public expenditure on education (% of GDP; in 2015)	5.33	3.90	4.26	5.42
Total fertility rate (in 2016)	1.74	1.41	1.53	1.37
Life expectancy at birth (years; in 2016)				
Males	69.8	80.1	72.6	80.6
Females	79.6	85.4	79.7	84.4
Municipal waste generated (kg per capita; in 2016)	410	³⁾ 614	379	621
Share of energy from renewable sources (in 2016)	37.2	5.4	14.2	6.0
Industrial production index (2010 = 100)	134.3	99.1	129.1	²⁾ 100.1

^{*)} Source: Eurostat; EU28 = European Union (28 countries); data in % unless otherwise stated.

¹⁾ The share of persons with an equivalised disposable income below the risk-of-poverty threshold, which is set at 60% of the national median equivalised disposable income (after social transfers).

COMPARISONS OF EU COUNTRIES IN 2017^{*)}

Germany	Netherlands	Poland	Portugal	Austria	Romania	Greece	Slovakia
123	128	70	77	128	63	67	77
2.2	²⁾ 2.9	4.6	³⁾ 2.7	3.0	²⁾ 6.9	²⁾ 1.4	3.4
104.8	²⁾ 105.3	²⁾ 118.0	³⁾ 101.3	102.6	²⁾ 136.0	²⁾ 93.4	110.6
64.1	56.7	50.6	125.7	78.4	35.0	178.6	50.9
³⁾ 2.94	²⁾ 2.03	²⁾ 0.97	²⁾ 1.27	²⁾ 3.09	0.48	1.01	0.79
1.7	1.3	1.6	1.6	2.2	1.1	1.1	1.4
105.0	112.3	56.2	85.1	108.3	52.2	84.3	69.1
58.9	60.9	53.7	53.7	57.9	52.2	40.9	55.1
3.8	4.9	4.9	9.0	5.5	4.9	21.5	8.1
1.6	1.9	1.5	4.5	1.8	2.0	15.6	5.1
16.5	12.7	17.3	19.0	14.1	25.3	21.2	12.7
4.52	5.40	4.81	.	5.43	2.72	⁴⁾ 3.68	4.59
²⁾ 1.60	1.66	1.39	1.36	1.53	1.64	1.38	1.48
78.6	80.0	73.9	78.1	79.3	71.7	78.9	73.8
83.5	83.2	82.0	84.3	84.1	79.1	84.0	80.7
627	³⁾ 510	³⁾ 307	474	564	261	640	348
14.8	6.0	11.3	28.5	33.5	25.0	15.2	12.0
113.6	²⁾ 97.1	131.7	103.0	²⁾ 118.5	²⁾ 145.1	²⁾ 94.6	²⁾ 143.1

²⁾ Preliminary data.

³⁾ Estimate.

⁴⁾ Definition differs.

COMPARISONS OF EU COUNTRIES IN 2017^{*)}

	Slovenia	Spain	Sweden	United Kingdom
GDP per capita in PPS, EU28 = 100	85	92	122	105
Real GDP growth rate	5.0	²⁾ 3.1	2.3	1.7
Real labour productivity per person employed, 2010 = 100 (GDP in PPS per person employed)	107.7	²⁾ 106.3	105.5	104.6
General government gross debt (% of GDP)	73.6	98.3	40.6	87.7
Gross domestic expenditure on R&D (GERD) (% of GDP; in 2016)	²⁾ 2.00	1.19	²⁾ 3.25	²⁾ 1.69
Inflation rate	1.6	2.0	1.9	2.7
Comparative price levels, EU28 = 100	85.3	92.3	125.5	116.6
Employment rate (age group 15+ years)	54.6	48.1	61.2	60.2
Unemployment rate (age group 15–74 years)	6.6	17.2	6.7	4.4
Long-term unemployment rate (12+ months)	3.1	7.7	1.2	1.1
At-risk-of-poverty rate after social transfers ¹⁾ (in 2016)	13.9	22.3	16.2	15.9
Public expenditure on education (% of GDP; in 2015)	4.64	4.16	7.05	.
Total fertility rate (in 2016)	1.58	1.34	1.85	³⁾ 1.79
Life expectancy at birth (years; in 2016)				
Males	78.2	80.5	80.6	79.4
Females	84.3	86.3	84.1	83.0
Municipal waste generated (kg per capita; in 2016)	466	443	443	483
Share of energy from renewable sources (in 2016)	21.3	17.3	53.8	9.3
Industrial production index (2010 = 100)	²⁾ 124.0	²⁾ 98.8	104.2	102.4

^{*)} Source: Eurostat; EU28 = European Union (28 countries); data in % unless otherwise stated.

¹⁾ The share of persons with an equivalised disposable income below the risk-of-poverty threshold, which is set at 60% of the national median equivalised disposable income (after social transfers).

²⁾ Preliminary data.

³⁾ Estimate.

MUNICIPALITIES OF THE CZECH REPUBLIC

as at 31 December 2017

Municipality	Population	Municipality	Population
Praha	1 294 513	Břeclav	24 797
Brno	379 527	Hodonín	24 683
Ostrava	290 450	Český Těšín	24 599
Plzeň	170 936	Litvínov	24 143
Liberec	103 979	Litoměřice	24 045
Olomouc	100 494	Krnov	23 595
České Budějovice	93 863	Nový Jičín	23 567
Ústí nad Labem	93 040	Sokolov	23 438
Hradec Králové	92 917	Chrudim	23 133
Pardubice	90 335	Havlíčkův Brod	23 101
Zlín	74 947	Strakonice	22 888
Havířov	72 382	Klatovy	22 288
Kladno	68 804	Valašské Meziříčí	22 200
Most	66 644	Kopřivnice	22 091
Opava	57 019	Jindřichův Hradec	21 460
Frýdek-Místek	56 334	Vyškov	20 999
Karviná	53 522	Žďár nad Sázavou	20 994
Jihlava	50 724	Bohumín	20 761
Teplice	49 563	Blansko	20 650
Děčín	49 226	Kutná Hora	20 536
Karlovy Vary	48 776	Náchod	20 132
Chomutov	48 666	Jirkov	19 466
Jablonec nad Nisou	45 771	Beroun	19 439
Mladá Boleslav	44 167	Mělník	19 351
Prostějov	43 798	Žatec	19 142
Přerov	43 565	Brandýs n. L.-St. Boleslav	18 815
Česká Lípa	37 405	Louny	18 446
Třebíč	36 050	Hranice	18 213
Třinec	35 302	Kralupy nad Vltavou	18 100
Tábor	34 467	Kadaň	18 015
Znojmo	33 719	Otrokovice	17 932
Příbram	32 867	Bílina	17 203
Cheb	32 171	Svitavy	16 937
Kolín	31 355	Ostrov	16 865
Trutnov	30 577	Benešov	16 522
Písek	30 119	Uherský Brod	16 522
Orlová	29 108	Bruntál	16 495
Kroměříž	28 897	Jičín	16 480
Šumperk	26 151	Rožnov pod Radhoštěm	16 469
Vsetín	26 109	Neratovice	16 180
Uherské Hradiště	25 215	Pelhřimov	16 105

REGIONS OF THE CZECH REPUBLIC

Abbreviation	Name of the Region	Abbreviation	Name of the Region
PHA	Hl. m. Praha	HKK	Královéhradecký
STČ	Středočeský	PAK	Pardubický
JHČ	Jihočeský	VYS	Vysočina
PLK	Plzeňský	JHM	Jihomoravský
KVK	Karlovarský	OLK	Olomoucký
ULK	Ústecký	ZLK	Zlínský
LBK	Liberecký	MSK	Moravskoslezský

REGIONAL COMPARISONS IN 2017

	Unit	CR total
Area	km ²	78 870
Population		
Mid-year population	persons	10 589 526
Females	persons	5 381 951
Live births per 1 000 population	‰	10.8
Deaths per 1 000 population	‰	10.5
Immigrants per 1 000 population	‰	4.3
Emigrants per 1 000 population	‰	1.7
Foreigners in the CR (excluding foreigners with valid asylum status on the territory of the CR; as at 31 December) ¹⁾	persons	524 142
Gross domestic product (2016 data)		
Share of the region in GDP, CR = 100	%	100.0
Gross domestic product per capita	CZK	451 785
CR = 100	%	100.0
EU28 = 100 (PPS)	%	87.9
Net disposable income of households per capita	CZK	220 470
Labour market (as at 31 December)		
Share of unemployed persons	%	3.77
Unemployed job applicants	persons	280 620
Long-term applicants (>12 months)	persons	94 512
Job vacancies		216 629
Agriculture		
Harvest: Wheat	thous. t	4 718.2
Barley	thous. t	1 712.3
Livestock (as at 1 April 2018)		
Cattle	thous. head	1 415.8
Pigs	thous. head	1 557.2
Poultry	thous. head	23 572.8
Construction		
Dwellings started		31 521
Dwellings completed		28 569
Average living floor area per completed dwelling	m ²	72.9
Health		
Average percentage of incapacity for work	%	4.262
Social security (as at 31 December)		
Pension recipients, total	persons	2 895 963
Old-age pension recipients, total	persons	2 403 933
Average monthly amount of full old-age pension	CZK	11 866
Crime and road accidents		
Registered criminal offences, total		202 303
Murders		146
Road accidents, total		103 821

¹⁾ 1 023 foreigners not identified as for their breakdown by region.

REGIONAL COMPARISONS IN 2017

Regions						
PHA	STČ	JHČ	PLK	KVK	ULK	LBK
496	10 928	10 058	7 649	3 310	5 339	3 163
1 286 554	1 345 764	639 180	579 228	296 106	820 937	440 934
661 496	681 432	323 824	292 294	149 879	413 758	224 112
11.9	11.4	10.8	10.5	9.3	10.3	10.8
9.5	9.8	10.6	10.8	11.5	11.2	10.7
29.5	20.7	9.4	11.9	10.4	9.4	11.2
21.1	11.9	7.4	7.8	11.8	8.8	9.8
195 068	69 096	19 204	31 479	19 958	34 978	19 790
25.0	11.6	5.0	5.1	1.9	5.7	3.2
937 542	414 379	373 833	422 251	300 894	333 521	352 313
207.5	91.7	82.7	93.5	66.6	73.8	78.0
182.4	80.6	72.7	82.1	58.5	64.9	68.5
286 540	230 347	208 126	220 976	204 526	193 141	211 250
2.34	3.17	3.09	2.55	3.47	5.39	3.76
21 787	29 370	14 112	10 517	7 488	31 522	11 861
6 574	9 214	3 121	2 692	2 746	12 838	3 729
42 380	30 321	13 833	20 396	6 503	10 808	8 674
27.0	1 047.1	432.9	332.1	65.8	389.4	70.5
9.1	336.0	164.4	145.6	21.5	109.7	21.9
150.6		221.9	165.0	43.9	44.3	50.0
316.8		103.6	116.2	14.6	98.5	19.9
4 959.8		1 906.8	2 416.4	273.6	427.5	66.7
3 734	6 514	1 703	2 356	619	1 196	859
5 846	5 449	1 253	1 647	375	1 012	670
63.2	81.5	81.6	72.6	80.2	78.9	86.9
3.186	4.339	5.087	4.688	4.413	4.549	4.732
306 718	341 101	179 044	162 087	80 220	229 816	123 548
267 951	285 441	148 308	133 451	67 329	182 531	101 867
12 691	12 019	11 765	11 811	11 519	11 718	11 750
50 726	20 424	9 662	9 727	5 084	17 531	8 672
22	18	4	14	9	10	6
23 032	14 707	4 301	3 590	2 967	10 638	4 443

REGIONAL COMPARISONS IN 2017

	Unit	CR total
Area	km ²	78 870
Population		
Mid-year population	persons	10 589 526
Females	persons	5 381 951
Live births per 1 000 population	‰	10.8
Deaths per 1 000 population	‰	10.5
Immigrants per 1 000 population	‰	4.3
Emigrants per 1 000 population	‰	1.7
Foreigners in the CR (excluding foreigners with valid asylum status on the territory of the CR; as at 31 December) ¹⁾	persons	524 142
Gross domestic product (2016 data)		
Share of the region in GDP, CR = 100	%	100.0
Gross domestic product per capita	CZK	451 785
CR = 100	%	100.0
EU28 = 100 (PPS)	%	87.9
Net disposable income of households per capita	CZK	220 470
Labour market (as at 31 December)		
Share of unemployed persons	%	3.77
Unemployed job applicants	persons	280 620
Long-term applicants (>12 months)	persons	94 512
Job vacancies		216 629
Agriculture		
Harvest: Wheat	thous. t	4 718.2
Barley	thous. t	1 712.3
Livestock (as at 1 April 2018)		
Cattle	thous. head	1 415.8
Pigs	thous. head	1 557.2
Poultry	thous. head	23 572.8
Construction		
Dwellings started		31 521
Dwellings completed		28 569
Average living floor area per completed dwelling	m ²	72.9
Health		
Average percentage of incapacity for work	%	4.262
Social security (as at 31 December)		
Pension recipients, total	persons	2 895 963
Old-age pension recipients, total	persons	2 403 933
Average monthly amount of full old-age pension	CZK	11 866
Crime and road accidents		
Registered criminal offences, total		202 303
Murders		146
Road accidents, total		103 821

¹⁾ 1 023 foreigners not identified as for their breakdown by region.

REGIONAL COMPARISONS IN 2017

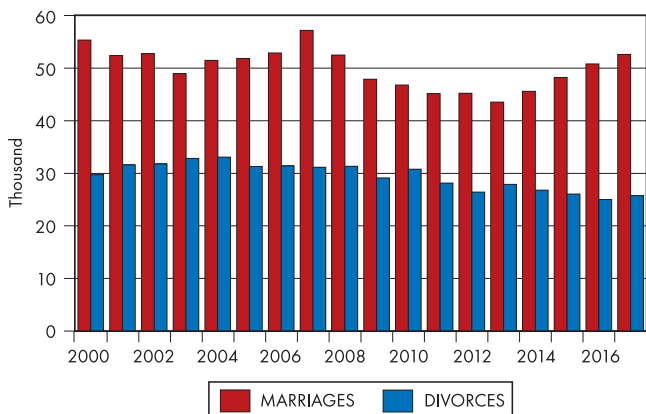
Regions						
HKK	PAK	VYS	JHM	OLK	ZLK	MSK
4 759	4 519	6 796	7 188	5 272	3 962	5 430
550 848	517 243	508 664	1 180 477	633 133	583 039	1 207 419
279 694	261 345	256 130	601 755	323 384	297 402	615 446
10.4	10.4	10.7	11.4	10.5	10.4	10.0
10.5	10.4	10.4	10.4	11.1	11.0	11.2
9.3	10.7	7.8	10.2	7.4	6.4	4.6
8.6	8.3	8.1	7.5	8.0	7.0	6.7
15 268	15 157	9 265	46 574	11 425	9 422	26 435
4.6	3.9	4.0	10.8	4.6	4.8	9.8
401 056	360 372	373 421	436 430	346 789	391 336	385 247
88.8	79.8	82.7	96.6	76.8	86.6	85.3
78.0	70.1	72.6	84.9	67.5	76.1	74.9
214 976	209 191	214 463	221 912	199 839	203 999	199 436
2.72	2.83	3.80	4.60	4.35	3.43	5.77
10 483	10 152	12 992	37 290	19 519	14 040	49 487
2 647	2 153	3 733	13 358	6 453	4 122	21 132
8 816	19 953	7 475	16 826	8 696	7 975	13 973
338.9	308.4	414.1	559.7	315.3	196.2	220.7
81.1	108.2	213.0	184.0	186.6	50.9	80.4
98.3	117.1	220.1	64.7	92.8	62.8	84.3
63.6	170.2	316.8	137.0	85.8	76.7	37.7
2 780.5	4 401.1	602.5	3 536.8	609.4	804.9	786.8
1 428	1 504	1 354	4 027	2 413	1 261	2 553
1 215	1 136	1 014	4 236	1 479	976	2 261
69.9	77.2	84.5	66.4	66.7	78.1	73.0
4.433	4.550	4.839	4.263	4.543	5.173	5.139
160 957	147 550	147 500	328 649	177 128	168 761	342 884
134 981	121 455	122 321	267 529	149 202	138 929	282 638
11 719	11 629	11 594	11 719	11 504	11 638	11 936
7 230	5 808	5 459	20 086	10 246	6 867	24 781
10	6	5	12	8	6	16
5 163	3 970	4 423	7 587	5 161	4 215	9 624

POPULATION

	2014	2015	2016	2017
Mid-year population (thous. persons)	10 525	10 543	10 565	10 590
Females	5 356	5 363	5 372	5 382
Foreigners in the Czech Republic ¹⁾ (thous. persons)	449	465	493	524
From EU28 countries	185	195	208	220
Births, total	110 252	111 162	113 083	114 789
Live births	109 860	110 764	112 663	114 405
within marriage	58 593	57 788	57 930	58 314
Males	56 410	56 817	57 837	58 671
per 1 000 population	10.4	10.5	10.7	10.8
Deaths	105 665	111 173	107 750	111 443
per 1 000 population	10.0	10.5	10.2	10.5
Caused by diseases of the circulatory system	48 627	50 969	47 611	49 346
Natural change	4 195	-409	4 913	2 962
per 1 000 population	0.4	0.0	0.5	0.3
Neonatal mortality (‰)	1.6	1.5	1.7	1.8
Infant mortality (‰)	2.4	2.5	2.8	2.7
Stillbirth rate (‰)	3.6	3.6	3.7	3.3
Life expectancy (years)				
Males	75.7	75.6	76.0	76.0
Females	81.7	81.5	81.8	81.8
Marriages	45 575	48 191	50 768	52 567
per 1 000 population	4.3	4.6	4.8	5.0
Divorces	26 764	26 083	24 996	25 755
per 1 000 population	2.5	2.5	2.4	2.4
Abortions (incl. ectopic pregnancies)	36 956	35 761	35 921	35 012
per 1 000 population	3.5	3.4	3.4	3.3
Induced abortions	21 893	20 403	20 406	19 415
Spontaneous abortions	13 857	14 082	14 212	14 190

¹⁾ As at 31 December; excl. foreigners with valid asylum status on the territory of the Czech Republic.

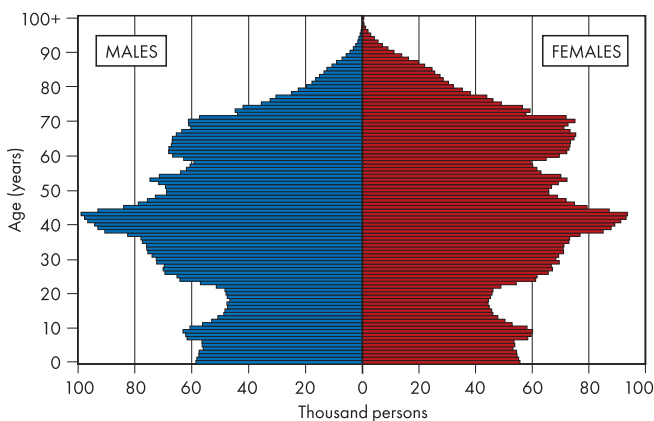
MARRIAGES AND DIVORCES



POPULATION

	2014	2015	2016	2017
Distribution of the population by age group as at 31 December (thous. persons)				
Total	10 538	10 554	10 579	10 610
Aged 0–14 years	1 601	1 624	1 647	1 671
Aged 15–64 years	7 057	6 998	6 943	6 899
Aged 65+ years	1 880	1 932	1 989	2 040
Males	5 177	5 186	5 201	5 220
Aged 0–14 years	821	833	845	857
Aged 15–64 years	3 577	3 550	3 526	3 509
Aged 65+ years	778	803	830	854
Females	5 361	5 368	5 378	5 390
Aged 0–14 years	780	791	803	814
Aged 15–64 years	3 479	3 447	3 416	3 390
Aged 65+ years	1 102	1 129	1 159	1 186

AGE DISTRIBUTION OF THE POPULATION as at 31 December 2017



	2014	2015	2016	2017
Internal migration of the population				
Migrants, total (persons)	238 339	242 113	250 722	246 070
Type of migration				
From a municipality to another municipality in the same district	104 998	105 014	107 994	104 512
From a district to another district in the same region	49 979	51 393	52 235	52 468
From a region to another region	83 362	85 706	90 493	89 090
Per 1 000 population				
Total	22.6	23.0	23.7	23.2
From a municipality to another municipality in the same district	10.0	10.0	10.2	9.9
From a district to another district in the same region	4.7	4.9	4.9	5.0
From a region to another region	7.9	8.1	8.6	8.4

GROSS DOMESTIC PRODUCT

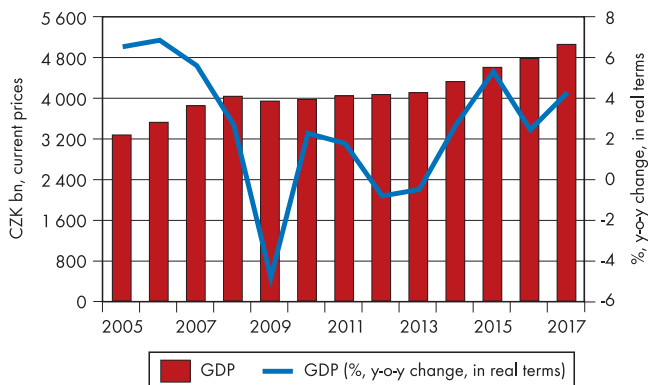
	2014	2015	2016	2017
Gross domestic product (CZK bn, current prices)	4 313.8	4 595.8	4 768.0	5 045.2
Final consumption expenditure	2 922.8	3 035.3	3 161.4	3 362.7
Households	2 044.3	2 125.0	2 213.1	2 362.1
General government	849.2	883.1	918.7	968.7
Non-profit institutions	29.4	27.1	29.6	31.9
Gross fixed capital formation	1 084.1	1 216.3	1 188.7	1 246.1
Change in inventories and acquisitions less disposals of valuables	32.4	68.5	50.0	57.0
Exports of goods and services	3 599.4	3 769.5	3 837.7	4 073.2
Exports of goods ¹⁾	3 039.8	3 153.1	3 199.1	3 390.2
Exports of services	559.6	616.4	638.6	683.0
Imports of goods and services	3 324.9	3 493.8	3 469.8	3 693.8
Imports of goods ²⁾	2 921.6	3 079.0	3 051.9	3 260.2
Imports of services	403.3	414.8	417.9	433.6
GDP (% , previous year = 100)	102.7	105.3	102.5	104.3
GDP per capita				
CZK, current prices	409 870	435 911	451 288	476 432
CZK, constant prices: 2010	388 550	408 474	417 599	434 498
GDP – average exchange rate, current prices				
USD mil.	207 934	186 820	195 153	215 772
USD per capita	19 757	17 720	18 471	20 376
GDP in purchasing power standards, current prices				
PPS mil. ³⁾	250 278	266 530	269 930	279 985
PPS per capita ³⁾	23 780	25 280	25 549	26 440
GDP deflator (previous year = 100)	102.5	101.2	101.3	101.5

¹⁾ FOB

²⁾ CIF

³⁾ Data based on unrevised purchasing power standards. The average purchasing power of 1 PPS corresponds to the average purchasing power of 1 € in EU28 countries as at 19 June 2018.

GDP



FINANCE*)

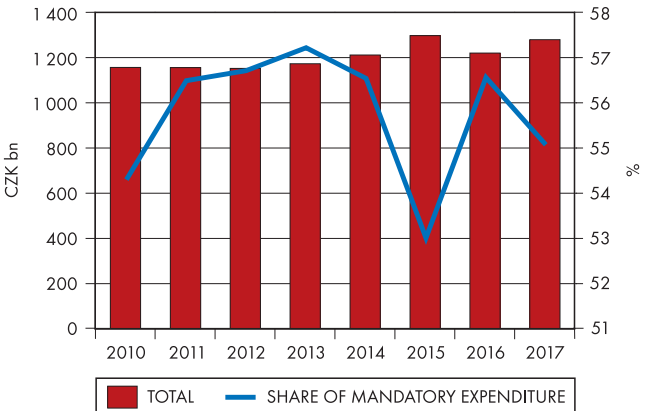
	2014	2015	2016	2017
Consolidated general government ¹⁾				
Revenue from operating activities and sales of non-financial assets	1 595 469	1 745 344	1 783 568	1 876 143
Expenditure for operating activities and purchase of non-financial assets	1 670 461	1 777 729	1 705 695	1 815 508
General government debt	1 752 958	1 776 046	1 695 885	1 703 297
State budget, total ²⁾				
Revenue, total	1 133 826	1 234 517	1 281 618	1 273 644
Tax revenue	952 518	1 002 131	1 071 488	1 155 614
Non-tax revenue	41 956	38 594	33 894	24 429
Capital revenue	4 947	7 911	6 525	8 366
Transfers received	134 405	185 881	169 710	85 235
Expenditure, total	1 211 608	1 297 322	1 219 844	1 279 796
Current expenditure	1 100 102	1 121 662	1 135 570	1 198 050
Capital expenditure	111 507	175 659	84 274	81 746
Revenue and expenditure of regions, municipalities, voluntary unions of municipalities, and Regional Councils of Cohesion Regions ²⁾				
Revenue, total	422 235	446 025	446 581	472 597
Tax revenue	219 391	226 301	249 498	270 743
Non-tax revenue	37 500	36 794	35 509	34 139
Capital revenue	6 666	5 786	8 528	6 697
Transfers received	158 695	177 097	153 169	160 988
Adjustment to revenue after consolidation	17	-47	123	-30
Expenditure, total	410 901	425 292	393 527	441 647
Current expenditure	301 784	312 101	326 957	358 009
Capital expenditure	109 117	113 191	66 570	83 638

*1) Source: Ministry of Finance; CZK million.

¹⁾ IMF methodology.

²⁾ National methodology.

STATE BUDGET EXPENDITURE



EXTERNAL TRADE*)

	2014	2015	2016	2017
Turnover, total (CZK bn)	6 152.4	6 395.0	6 434.6	6 862.3
EU28	4 657.1	4 871.5	4 943.9	5 224.2
Euro area 19	3 602.4	3 758.2	3 811.8	4 029.4
Non-EU	1 477.3	1 496.8	1 465.5	1 613.5
Unspecified	18.0	26.7	25.2	24.6
Exports, total (CZK bn, FOB)	3 149.2	3 263.0	3 299.1	3 512.9
EU28	2 612.8	2 732.8	2 770.7	2 943.5
Euro area 19	2 025.2	2 120.7	2 156.0	2 290.2
Non-EU	534.5	527.2	526.4	566.8
Unspecified	1.9	3.0	2.0	2.6
Imports, total (CZK bn, CIF)	3 003.2	3 132.0	3 135.5	3 349.4
EU28	2 044.3	2 138.7	2 173.2	2 280.7
Euro area 19	1 577.2	1 637.5	1 655.8	1 739.1
Non-EU	942.8	969.6	939.1	1 046.8
Unspecified	16.1	23.7	23.2	22.0
Balance, total (CZK bn)	146.0	131.0	163.7	163.5
EU28	568.5	594.1	597.5	662.9
Euro area 19	448.0	483.2	500.2	551.1
Non-EU	-408.4	-442.4	-412.7	-480.0
Unspecified	-14.1	-20.7	-21.2	-19.4

*) In the national concept.

TRENDS



EXTERNAL TRADE^{*)}

External trade by selected CZ-CPA division	CZK mil. FOB/CIF		Share in total exports/imports (%)	
	2016	2017	2016	2017
Exports, total	3 299 106	3 512 897	100.0	100.0
Crude petroleum and natural gas	11 502	3 522	0.3	0.1
Food products	114 639	108 807	3.5	3.1
Chemicals and chemical products	140 840	160 497	4.3	4.6
Fabricated metal products, except machinery and equipment	225 298	222 338	6.8	6.3
Computer, electronic and optical products	298 383	341 044	9.0	9.7
Electrical equipment	274 011	296 777	8.3	8.4
Machinery and equipment n.e.c.	363 327	391 556	11.0	11.1
Motor vehicles, trailers and semi-trailers	923 642	990 261	28.0	28.2
Others	947 464	998 095	28.7	28.5
Imports, total	3 135 452	3 349 431	100.0	100.0
Crude petroleum and natural gas	89 167	120 869	2.8	3.6
Food products	150 738	150 214	4.8	4.5
Chemicals and chemical products	260 285	269 953	8.3	8.1
Fabricated metal products, except machinery and equipment	164 890	164 186	5.3	4.9
Computer, electronic and optical products	357 840	373 740	11.4	11.2
Electrical equipment	234 890	254 703	7.5	7.6
Machinery and equipment n.e.c.	299 895	317 166	9.6	9.5
Motor vehicles, trailers and semi-trailers	507 690	545 416	16.2	16.3
Others	1 070 057	1 153 184	34.1	34.3

^{*)} In the national concept.

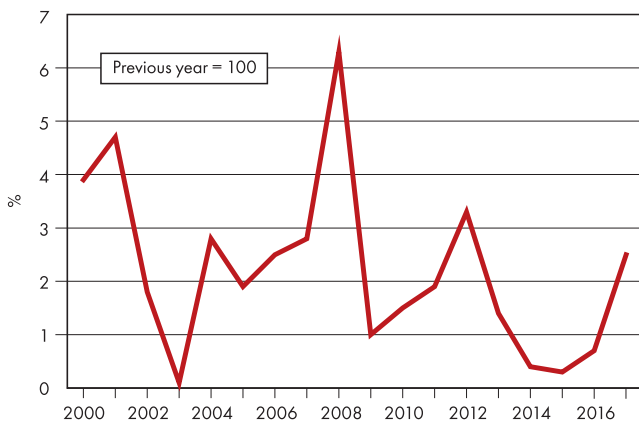
STANDARD OF LIVING

	2014	2015	2016	2017
At-risk-of-poverty threshold (CZK) for household of an individual per year	118 817	122 637	128 287	134 334
At-risk-of-poverty rate (%)	9.7	9.7	9.7	9.1
Material deprivation rate (%)	6.7	5.6	4.8	3.7
Low work intensity rate (%)	7.6	6.8	6.7	5.5
People at risk of poverty or social exclusion (%)	14.8	14.0	13.3	12.2
Household consumption expenditure structure (%)	100.0	100.0	100.0	100.0
Food and non-alcoholic beverages	20.3	20.0	19.8	²⁾ 19.8
Alcoholic beverages, tobacco	2.9	2.9	2.9	²⁾ 3.2
Clothing and footwear	4.9	5.0	5.1	²⁾ 5.0
Housing, water, electricity, gas and other fuels	21.5	21.1	20.8	²⁾ 22.8
Furnishings, household equipment and routine household maintenance	5.7	6.0	6.1	²⁾ 7.1
Health	2.6	2.6	2.6	²⁾ 2.5
Transport	10.5	10.5	11.0	²⁾ 9.8
Communication	4.2	4.2	4.1	²⁾ 4.3
Recreation and culture	9.5	9.4	9.5	²⁾ 10.0
Education	0.6	0.6	0.5	²⁾ 0.7
Restaurants and hotels	5.3	5.6	5.7	²⁾ 6.7
Miscellaneous goods and services	12.0	12.1	11.8	²⁾ 8.1
Inflation rate (%)	0.4	0.3	0.7	2.5
Consumer price indices ¹⁾	99.7	100.0	100.7	103.1
Cost-of-living indices for households of pensioners ¹⁾	99.9	100.0	100.6	102.8

¹⁾ The average of 2015 = 100.

²⁾ The methodology was changed; preliminary data.

INFLATION RATE



CONSUMPTION OF THE POPULATION

	2014	2015	2016	2017
Per capita consumption				
Meat, total ¹⁾ (kg)	75.9	79.3	80.3	80.3
Pigmeat	40.7	42.9	42.8	42.3
Beef	7.9	8.1	8.5	8.4
Poultrymeat	24.9	26.0	26.8	27.3
Fish, total (kg)	5.4	5.5	5.1	5.4
Lard and bacon (kg)	4.5	4.4	4.5	4.4
Butter (kg)	5.1	5.5	5.4	5.0
Fats and oils ²⁾ (kg)	24.3	24.3	24.5	24.4
Edible vegetable fats and oils (kg)	17.2	17.0	17.2	17.6
Cow's drinking milk (l)	58.3	58.6	58.5	59.4
Milk and milk products ³⁾ (kg)	236.5	242.3	247.5	246.5
Cheese, total (kg)	12.8	13.1	13.3	13.2
Processed cheese	2.1	2.0	2.0	1.9
Hard, soft and blue cheeses	10.7	11.1	11.3	11.3
Curd and cottage cheese (kg)	3.8	3.8	4.4	4.7
Eggs (pieces)	255	255	249	254
Pasta (kg)	7.3	7.5	7.1	7.8
Bread (kg)	40.0	39.8	39.7	39.2
Regular bread and pastry of wheat (kg)	52.7	47.9	50.1	50.4
Rice (kg)	5.8	6.5	6.5	6.5
Sugar (kg)	31.7	33.6	34.1	34.9
Wheat flour (kg)	93.2	95.2	96.8	95.7
Rye flour (kg)	9.6	9.1	9.2	8.8
Potatoes (kg)	70.1	66.3	69.1	68.5
Pulses (kg)	2.7	3.0	2.8	2.9
Fruit, in terms of fresh (kg)	78.1	82.4	84.0	82.0
Apples	21.2	22.3	23.7	22.3
Pears	3.0	3.5	3.4	2.7
Plums	5.3	6.0	5.7	5.0
Grapes	3.2	3.2	3.6	3.6
Subtropical and tropical fruits	31.2	33.5	35.0	35.1
Vegetables, in terms of fresh (kg)	86.4	84.8	87.3	88.2
Tomatoes	11.3	11.2	11.8	11.2
Green peppers	5.4	5.6	5.8	5.6
Onions	10.9	10.1	10.3	10.2
Lettuces	1.8	2.3	2.0	2.4
Coffee roasted (kg)	2.2	1.9	2.0	2.0
Tea (kg)	0.2	0.2	0.2	0.2
Non-alcoholic beverages (l)	249.0	249.9	247.8	241.9
Mineral water	55.0	56.4	57.5	55.3
Alcoholic beverages ⁴⁾ (l)	10.1	9.8	9.9	9.8
Spirits – 40% (l)	6.7	6.9	7.0	6.9
Beer (l)	147.0	146.6	146.9	144.3
Wine (l)	19.5	18.9	19.6	19.4
Cigarettes (pieces)	1 950	2 010	1 986	1 978

¹⁾ In terms of the carcass weight, incl. offal.

²⁾ In terms of net fat.

³⁾ In terms of milk, excl. butter.

⁴⁾ In terms of pure (100%) alcohol.

EMPLOYMENT AND WAGES

	2014	2015	2016	2017
Working persons in the national economy ¹⁾ (thous. persons)	4 974.3	5 041.9	5 138.6	5 221.6
Agriculture	136.7	147.5	149.1	146.3
Industry	1 478.2	1 521.0	1 569.8	1 595.0
Construction	413.9	396.0	386.3	391.9
Trade	590.2	615.7	605.8	600.0
Financial and insurance activities	121.5	118.1	117.2	115.0
Education	326.2	322.8	338.6	344.9
Health	353.5	351.6	360.4	375.3
The unemployed, total ¹⁾ (thous. persons)	323.6	268.0	211.4	155.5
By educational attainment				
Primary education	58.1	58.7	54.0	33.4
Secondary education without A-level examination	138.2	108.5	80.4	61.9
Secondary education with A-level examination	94.0	72.1	53.3	40.6
Higher education	33.3	28.7	23.6	19.4
By age group (years)				
up to 19	12.6	9.7	6.8	6.5
20–29	86.0	71.5	58.4	37.9
30–39	86.9	72.0	50.7	39.7
40–49	66.7	52.0	41.4	33.0
50–59	61.2	54.4	44.2	31.7
60+	10.1	8.5	9.9	6.8
The general unemployment rate ¹⁾ (%)	6.1	5.0	4.0	2.9
Job vacancies kept in the labour office register ²⁾ (thous.)	58.7	102.5	132.5	216.6
For persons with disabilities	5.3	9.6	11.3	13.0
Average gross monthly wages of employees in the national economy ³⁾ (CZK)	25 753	26 629	27 786	29 496
Agriculture	21 347	21 683	22 627	23 815
Industry	26 192	26 891	28 021	29 842
Construction	22 964	23 991	24 948	26 048
Trade	23 947	24 994	26 167	27 653
Financial and insurance activities	47 964	48 533	49 924	51 928
Education	25 062	25 638	26 713	28 369
Health	25 689	27 052	28 379	30 521

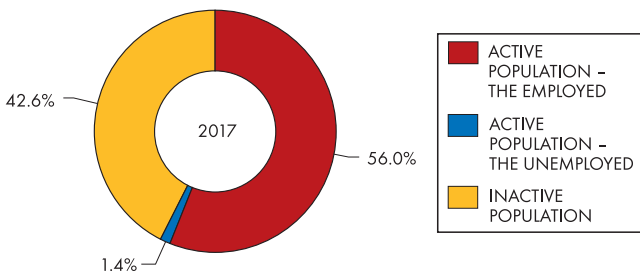
¹⁾ Data are weighted to the demographic statistics data which include the 2011 Population and Housing Census results.

Source: Labour Force Sample Survey (LFSS)

²⁾ As at 31 December. Source: Ministry of Labour and Social Affairs

³⁾ As full-time equivalent employees. Preliminary data from the quarterly survey for 2017.

ECONOMICALLY ACTIVE POPULATION AND ECONOMICALLY INACTIVE POPULATION

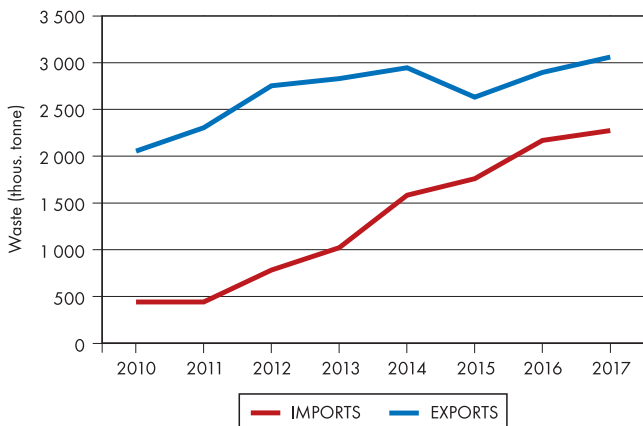


Source: LFSS, CZSO

ENVIRONMENT

	2014	2015	2016	2017
Protected areas (thous. ha)	1 278.3	1 280.3	1 316.7	1 319.4
National parks	119.5	119.5	119.5	119.1
Protected landscape areas	1 100.8	1 100.8	1 135.3	1 137.5
National nature reserves	28.8	28.7	28.6	29.5
National nature monuments	5.2	5.8	6.2	6.6
Nature reserves	42.5	42.3	42.7	42.9
Nature monuments	35.7	37.6	38.6	31.9
Specific emissions of main air pollutants (REZZO 1–3; t/km ²)				
Particulate matter	0.7	0.7	0.7	.
Sulphur dioxide (SO ₂)	1.7	1.6	1.5	.
Nitrogen oxides (NOx)	1.3	1.3	1.2	.
Carbon monoxide (CO)	9.0	8.9	9.0	.
Total ozone amounts in the atmosphere (DU on the BP scale)				
Annual average	336	337	330	325
Minimum amount	252	242	243	247
Maximum amount	469	488	483	440
Waste generated by enterprises (thous. t)	20 236	23 247	21 802	20 884
Hazardous	1 154	1 116	1 082	1 167
Accidents on water sources	178	221	233	206
Wastewater discharged into (mil. m ³)				
Watercourses	1 717	1 621	1 701	1 702
Public sewerage systems	446	446	447	453
Environmental expenditure of selected central government institutions (CZK bn, current prices)	38.4	43.1	13.3	42.2
State funds	3.5	3.5	1.1	1.2
State budget	33.7	38.8	11.6	40.3

IMPORTS AND EXPORTS OF WASTE

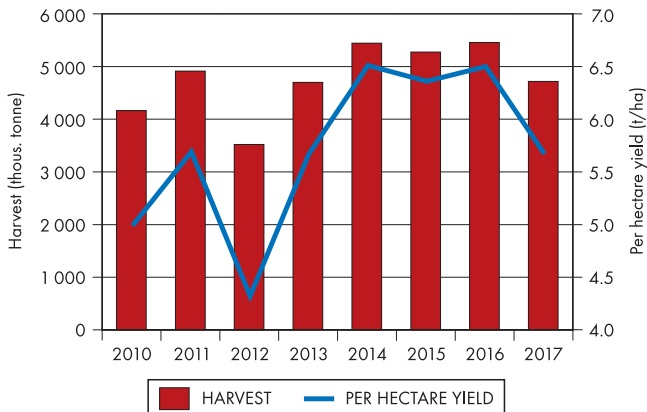


AGRICULTURE

	2014	2015	2016	2017
Output of the agricultural industry (CZK mil., current prices)	137 022	128 516	132 970	133 466
Crop output	79 451	74 815	79 817	74 186
Animal output	51 543	46 446	45 499	51 431
Utilised agricultural area (thous. ha)	3 516	3 494	3 489	3 521
Arable land	2 489	2 492	2 494	2 498
Fallow land	22	35	30	26
Areas under crops, total (thous. ha)	2 469	2 457	2 464	2 472
Cereals, total	1 411	1 403	1 352	1 352
Fodder crops on arable land	452	458	485	465
Per hectare yields (t/ha)				
Cereals, total	6.23	5.89	6.33	5.50
Wheat	6.51	6.36	6.50	5.67
Potatoes, total	29.07	22.26	29.88	29.42
Industrial sugar beet	70.28	59.38	67.81	66.56
Rape	3.95	3.43	3.46	2.91
Harvest (thous. tonnes)				
Cereals, total	8 779	8 184	8 596	7 457
Wheat	5 442	5 274	5 455	4 718
Potatoes, total	698	505	700	689
Industrial sugar beet	4 425	3 421	4 118	4 400
Rape	1 537	1 256	1 359	1 146
Per hectare of utilised agricultural area				
Harvest				
Grain crops (kg)	2 513	2 370	2 488	2 146
Potatoes (kg)	198	145	201	196
Sugar beet (kg)	1 259	979	1 180	1 249
Production				
Livestock for slaughter ¹⁾ (kg of live weight)	134	134	139	130
Milk (l)	812	838	855	851
Eggs for human consumption (pieces)	368	354	377	417

¹⁾ Cattle and pigs.

WHEAT



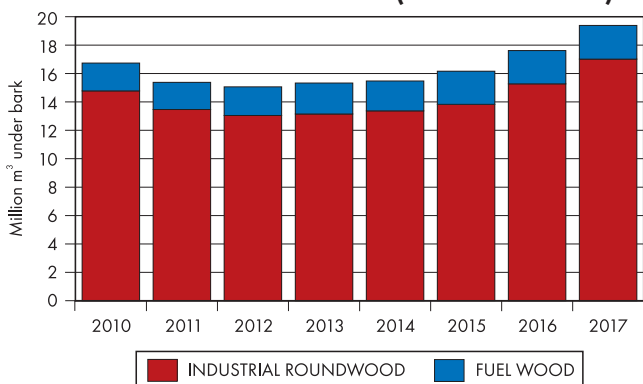
AGRICULTURE AND FORESTRY

	2014	2015	2016	2017
Livestock ¹⁾ (thous. head)				
Cattle	1 407	1 416	1 421	1 416
Cows	580	584	586	587
Pigs	1 560	1 610	1 491	1 557
Sheep	232	218	217	219
Horses	34	32	35	35
Poultry	22 508	21 314	21 494	23 573
Production of livestock for slaughter (thous. tonnes of live weight)	472	472	484	459
Cattle	170	175	173	166
Pigs	302	298	311	294
Poultry	244	249	239	254
Milk production (mil. l)	2 856	2 946	2 984	2 998
Production of eggs for human consumption (mil. pieces)	1 294	1 246	1 314	1 469
Average annual milk yield per cow (l)	7 704.8	8 001.3	8 061.3	8 222.5
Average annual egg yield per laying hen (pieces)	299.3	301.1	302.6	309.0
Consumption of mineral fertilisers ²⁾ (tonnes of nutrients)	353 989	357 668	385 739	380 659
Nitrogenous	268 892	270 023	292 750	285 739
Phosphorous	50 847	52 005	54 401	56 194
Potassium	34 250	35 641	38 589	38 725
Afforestation/reforestation (ha)	20 203	18 797	19 929	19 973
Coniferous	12 410	11 551	11 881	11 523
Non-coniferous	7 793	7 246	8 048	8 450
Roundwood removals, total (thous. m ³ under bark)	15 476	16 163	17 617	19 387
Coniferous	13 472	14 385	15 924	17 735
Non-coniferous	2 004	1 778	1 693	1 652
Salvage felling	4 527	8 153	9 399	11 743

¹⁾ As at 1 April of the following year.

²⁾ Per crop year.

ROUNDWOOD DELIVERIES (EXCL. IMPORTS)



INDUSTRY

CZ-NACE section, division	Industrial production index (previous year = 100)			
	2014	2015	2016	2017
Industry, total (B+C+D) ¹⁾	105.0	104.6	103.5	106.5
Mining and quarrying	97.0	97.4	93.4	98.0
Manufacturing	106.7	105.5	104.1	106.9
Manufacture of food products	103.9	104.6	100.9	101.2
Manufacture of beverages	101.8	103.2	98.7	102.8
Manufacture of textiles	104.4	103.0	104.7	103.3
Manufacture of wearing apparel	94.3	116.2	104.1	109.8
Manufacture of leather and related products	107.9	92.0	103.9	99.4
Manufacture of wood and of products of wood and cork, except furniture; manufacture of articles of straw and plaiting materials	96.5	96.4	102.2	103.7
Manufacture of paper and paper products	106.9	106.5	102.7	103.4
Printing and reproduction of recorded media	100.6	96.2	113.1	96.8
Manufacture of chemicals and chemical products	109.5	95.5	92.9	119.0
Manufacture of basic pharmaceutical products and pharmaceutical preparations	100.8	107.8	103.0	110.7
Manufacture of rubber and plastic products	105.2	107.2	104.3	108.0
Manufacture of other non- -metallic mineral products	104.0	105.8	99.1	107.6
Manufacture of basic metals	103.5	98.6	98.9	99.1
Manufacture of fabricated metal products, except machinery and equipment	105.2	108.4	105.0	108.3
Manufacture of computer, electronic and optical products	118.4	100.9	103.4	111.4
Manufacture of electrical equipment	107.4	107.6	102.4	108.3
Manufacture of machinery and equipment n.e.c.	103.4	102.6	102.8	108.8
Manufacture of motor vehicles, trailers and semi-trailers	113.5	112.1	111.8	109.6
Manufacture of other transport equipment	104.5	105.3	103.8	90.6
Manufacture of furniture	104.4	105.2	105.8	104.2
Other manufacturing	105.5	112.3	100.3	100.2
Repair and installation of machinery and equipment	107.6	93.8	102.9	97.2
Electricity, gas, steam and air conditioning supply ¹⁾	97.0	97.3	100.9	104.7

¹⁾ Excluding 35.3 Steam and air conditioning supply.

INDUSTRY AND ENERGY

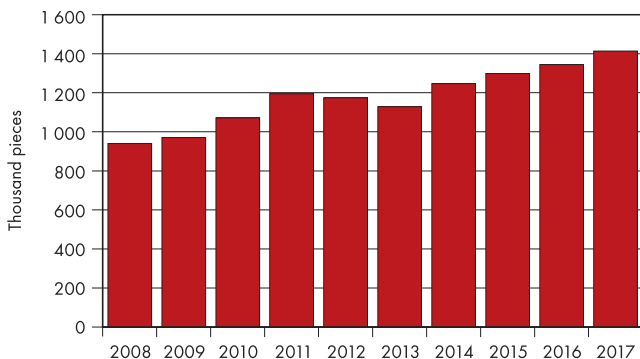
	2017 ¹⁾	
	Industry, total	Enterprises with 50+ employees
Average number of enterprises	192 488	4 265
Employed persons (thous. persons – headcount)	1 433	.
Employees	1 263	1 004
Wages of employees ²⁾ (CZK mil.)	447 487	377 144
Industrial production index (2016 = 100)	106.5	.
Sales (CZK mil., current prices)		
from sale of goods and services	5 330 678	4 602 747
from sale of goods for resale	683 967	571 354
Outputs, incl. trade margin (CZK mil., current prices)	5 469 748	4 719 771
Consumed materials, energy, and services (CZK mil., current prices)	4 177 978	3 649 822
Value added (CZK mil., current prices)	1 291 770	1 069 949
Share of value added in outputs (CZK mil., current prices)	23.6	22.7
Acquisition of intangible and tangible fixed assets ³⁾ (CZK mil., current prices)	265 807	228 310

¹⁾ Preliminary data.

²⁾ Excl. other personnel expenses.

³⁾ Excl. transfer of fixed assets due to organizational changes and other free acquisitions.

PRODUCTION OF PASSENGER CARS

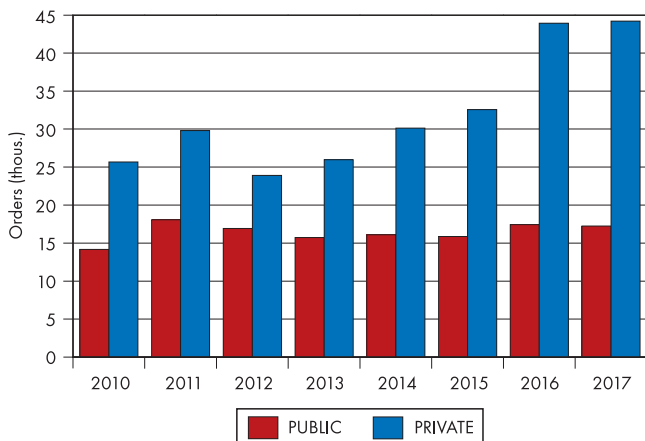


	2014	2015	2016	2017
Electricity production (GWh)	86 148	83 892	83 309	87 038
Exports (measured)	28 142	28 661	24 791	28 109
Imports (measured)	11 842	16 146	13 817	15 072
Net inland consumption	58 969	60 334	61 344	62 408
Mining for sale (thous. t)				
Coking coal / other bituminous coal	8 680	8 314	6 900	5 601
Lignite / brown coal	38 177	38 105	38 528	39 306
Manufacture of coke and semi-coke (thous. t)	2 539	2 332	2 209	2 489

CONSTRUCTION

	2014	2015	2016	2017
Construction production index				
Year-on-year index	104.3	106.8	94.4	103.3
Fixed base index (2015 = 100)	93.6	100.0	94.4	97.5
Construction work "S" (according to delivery contracts), total (CZK bn, current prices)	428.3	459.0	424.6	453.4
In the Czech Republic	417.0	446.1	410.7	437.5
New construction, reconstruction and upgrade	302.6	326.3	292.3	314.4
Repair and maintenance	114.4	119.8	118.4	123.1
Abroad	11.3	12.9	13.9	15.9
Average registered number of employees of construction enterprises (thous. persons)	213	211	208	207
Dwellings completed	23 954	25 095	27 322	28 569
In family houses	13 992	13 890	14 567	15 170
In multi-dwelling buildings	6 422	7 356	8 998	9 264
In all types of extensions	2 026	1 978	1 812	2 089
In non-residential buildings	451	589	681	355
Average living floor area per completed dwelling (m ²)	75.3	74.7	72.8	72.9
In family houses	92.8	93.0	91.9	92.1
In multi-dwelling buildings	49.3	51.6	50.9	51.7

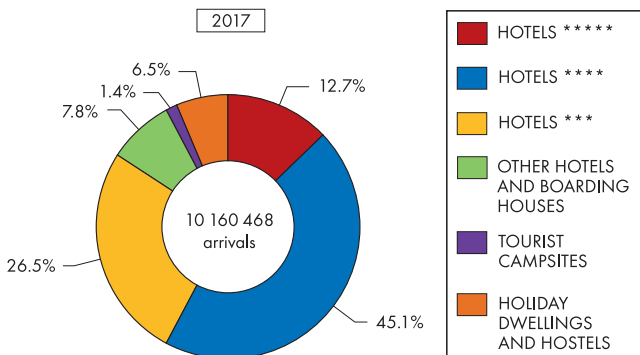
NEW CONSTRUCTION WORK ORDERS IN THE CR



TOURISM

	2014	2015	2016	2017
Enterprises in accommodation and food and beverage service activities (CZ-NACE divisions 55, 56) with 250+ employees	59 008	58 612	60 120	.
Collective accommodation establishments	9 013	9 163	9 168	9 007
Hotels*****	57	58	60	61
Hotels****	557	601	621	653
Other hotels and boarding houses	5 219	5 333	5 341	5 253
Tourist campsites	513	516	510	515
Holiday dwellings and hostels	993	995	1 013	973
Bed places in collective accommodation establishments (permanent, excl. extra beds)	519 909	529 250	533 507	526 788
in hotels*****	12 661	12 561	13 146	13 579
in hotels****	71 970	75 921	78 054	80 221
in other hotels and boarding houses	221 799	225 728	226 556	223 561
in tourist camp-sites	31 917	32 406	33 042	33 473
in holiday dwellings and hostels	62 684	63 110	63 902	61 405
Places for tents and caravans	50 837	48 585	48 719	49 725
in tourist camp-sites	47 618	46 441	45 764	47 188
Guests in collective accommodation establishments (thous. persons)	15 587	17 196	18 389	20 001
in hotels*****	1 174	1 189	1 289	1 407
in hotels****	4 771	5 231	5 748	6 325
Non-residents	8 096	8 707	9 321	10 160
Number of overnight stays of the guests (thous.)	42 947	47 094	49 697	53 219
Non-residents	22 110	23 287	24 268	26 257

ARRIVALS OF NON-RESIDENTS TO COLLECTIVE ACCOMMODATION ESTABLISHMENTS BY CATEGORY

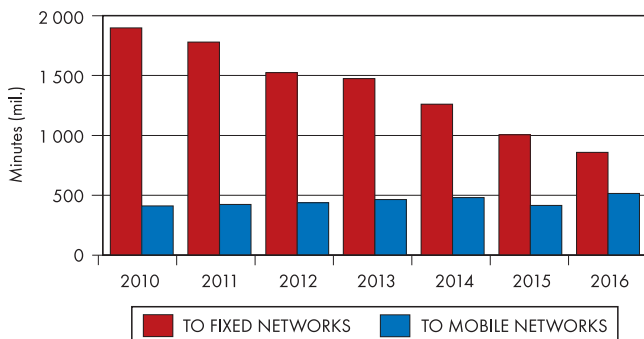


COMMUNICATION TECHNOLOGIES

	2014	2015	2016	2017
Fixed telephone lines, total ¹⁾ (thous.)	1 022	993	832	740
Residential	589	522	403	355
Business	433	471	429	385
VoIP lines, total (thous.)	853	900	917	893
Residential	344	307	299	259
Business	509	593	619	634
Mobile network subscribers (active SIM cards), total (thous.)	13 518	14 017	14 299	14 511
Pre-paid cards	5 055	4 893	4 821	4 656
National outgoing telephone traffic, total (mil. minutes)	21 567	21 362	21 684	21 870
From public fixed network ¹⁾	1 370	1 040	1 011	963
From mobile network	20 197	20 322	20 672	20 907
Short messages (SMS) sent (mil.)	8 463	8 394	8 300	8 385
Cable TV outlets, total (thous.)	1 493	1 683	1 728	1 812
Broadband fixed Internet subscriptions, total (thous.)	2 943	2 946	3 063	3 136
By means of:				
xDSL lines	952	943	910	878
Cable TV modem	527	541	563	589
Fixed wireless access (FWA, WiFi)	1 110	989	1 068	1 099
Optical fibre	420	473	523	570
Broadband mobile Internet subscriptions, total (thous.)	7 165	7 759	8 530	8 705
Registered domains in the CR (thous.)	1 173	1 230	1 281	1 306

¹⁾ Includes telephone services provided merely in the public switched telephone network (PSTN).

DOMESTIC CALLS FROM FIXED TELEPHONE NETWORK



Source: Czech Telecommunication Office

INFORMATION SOCIETY

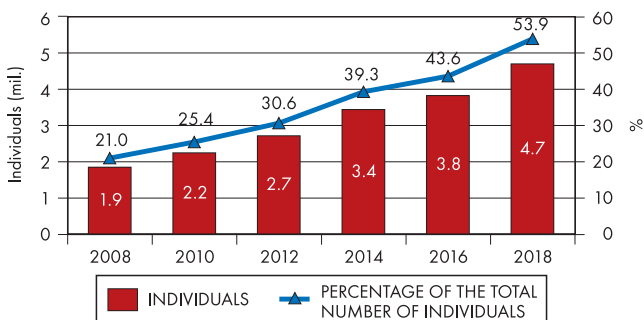
Reference period – January of a given year	2015	2016	2017	2018
Enterprises¹⁾ (%):				
Having an Internet connection	97.9	97.7	97.6	97.9
Connection speed 30 Mb/s and higher	19.2	24.3	29.9	35.4
Using optical fibre	13.3	18.0	21.4	22.9
Having websites	82.7	82.2	82.9	82.8
Having a profile on social networks	23.5	30.3	34.1	42.3
Employees¹⁾ at work (%):				
Using a computer with Internet access	38.3	36.9	41.6	42.9
Using portable or mobile devices with Internet access	.	19.3	24.6	26.7

¹⁾ As percentages in the total number of enterprises/employees.

Reference period – 2nd quarter of a given year	2015	2016	2017	2018
Households¹⁾ having a computer, total (%)	73.1	75.6	76.3	78.4
Desktop	41.9	40.4	38.2	39.9
Portable	54.7	59.6	62.1	66.9
Computer with an Internet connection	73.1	76.1	77.2	80.5
Individuals¹⁾ (aged 16+ years) using the Internet, total (%)	75.7	76.5	78.8	80.7
Using a mobile phones to access the Internet	37.0	41.2	50.4	58.4
By age group (years)				
16–24 years	77.1	81.1	86.7	93.7
25–54 years	48.9	55.1	68.8	79.4
55–64 years	14.2	17.6	28.6	35.9
65+ years	3.1	5.5	5.8	9.9
Selected activities carried out by individuals (16+ years) on the Internet (%)				
Reading online news	65.2	62.2	71.4	.
Social networking	37.4	41.4	44.3	51.0
Internet banking	44.9	47.4	52.0	57.6
Internet shopping	41.9	43.6	51.6	53.9
Using cloud services	18.5	20.6	22.0	19.0
Playing/downloading games	19.1	19.5	19.7	23.2

¹⁾ As percentages in the total number of households/individuals.

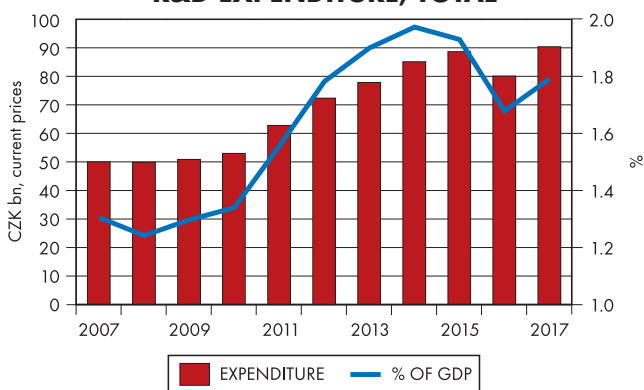
INDIVIDUALS AGED 16+ YEARS PURCHASING ON THE INTERNET



SCIENCE AND RESEARCH

	2014	2015	2016	2017 ¹⁾
Number of R&D performers, total	2 629	2 644	2 605	2 880
with R&D as their principal (prevailing) activity	223	219	218	239
R&D personnel (FTE) ²⁾ , total	64 443	66 433	65 783	69 736
Sector of performance				
Business enterprise sector	35 256	36 365	37 263	39 968
Government sector	12 380	12 953	13 099	13 689
Higher education sector	16 525	16 868	15 201	15 803
Private non-profit sector	282	247	220	276

R&D EXPENDITURE, TOTAL



	2014	2015	2016	2017 ¹⁾
R&D expenditure, total (CZK bn)	85.1	88.7	80.1	90.4
Labour costs	37.4	39.2	41.7	47.4
Other current costs	29.7	31.2	31.0	34.5
Capital expenditure	18.0	18.3	7.4	8.5
Sector of performance				
Business enterprise sector	47.0	48.1	49.0	56.8
Higher education sector	16.1	18.1	14.5	15.6
Government sector	21.6	22.1	16.4	17.7
Private non-profit sector	0.4	0.3	0.2	0.3
Direct government support of R&D – national, total (CZK bn)	27.3	27.8	28.0	30.7
Main beneficiaries				
Public universities	11.7	12.2	12.3	13.5
Public research institutions	8.4	8.7	9.2	9.7
Private enterprises	3.4	3.1	2.6	3.0
Other	3.8	3.8	3.9	4.4

¹⁾ Preliminary data.

²⁾ Recalculated to one year full-time equivalent (working hours devoted to R&D activities).

EDUCATION*)

	2014	2015	2016	2017
Schools (number)				
Nursery schools	5 158	5 209	5 209	5 269
Basic schools	4 106	4 115	4 140	4 155
Secondary schools	1 310	1 304	1 307	1 308
Conservatoires	18	18	18	18
Higher professional schools	174	171	168	166
Universities ¹⁾	71	69	68	66
Children, pupils, and students in:				
Nursery schools	367 603	367 361	362 653	362 756
Basic schools	854 137	880 251	906 188	926 108
Secondary schools	435 542	427 107	424 849	421 535
Programmes				
with apprenticeship certificate ²⁾	94 759	91 841	89 467	87 437
with A-level examination (general)	127 666	128 045	128 994	129 554
with A-level examination (technical) ²⁾	188 319	184 583	185 006	185 446
Conservatoires	3 752	3 733	3 795	3 781
Higher professional schools	26 964	24 786	22 002	19 883
Public and private universities	346 893	326 528	311 168	299 054
Programmes:				
Bachelor study programme	207 247	192 382	179 873	172 365
Master study programme	118 380	112 883	110 564	106 637
Doctoral study programme	24 205	23 861	23 180	22 192
Teachers ³⁾ and lecturers in:				
Nursery schools	29 283.4	29 513.8	29 629.5	30 303.2
Basic schools	59 128.7	60 220.7	61 634.9	63 004.8
Secondary schools	39 070.1	38 385.9	38 069.6	38 114.9
Conservatoires	1 063.4	1 062.9	1 059.7	1 040.8
Higher professional schools	1 742.5	1 667.3	1 526.3	1 450.3
Public universities				
Professors and readers	4 891.5	5 833.7	5 875.6	5 897.6
Other teaching staff	9 619.3	12 021.6	11 725.1	11 689.1
Public expenditure on education (CZK mil.; current prices)	178 713	182 848	173 448	194 823

*) Source: Ministry of Education, Youth, and Sports.

¹⁾ All universities, i. e. public, private, and state universities.

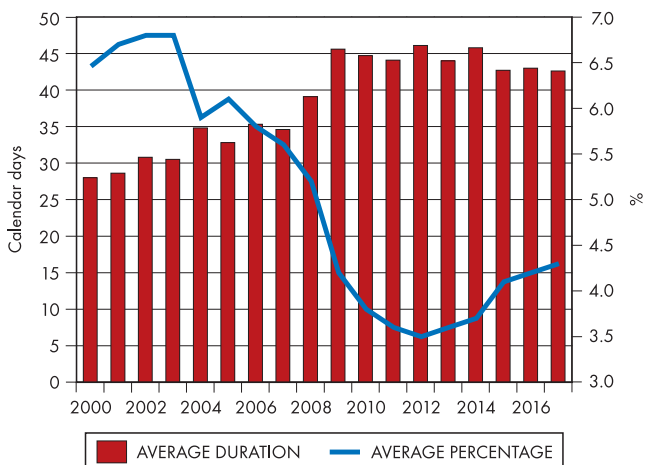
²⁾ Including shortened courses.

³⁾ Full-time equivalent.

HEALTH

	2014	2015	2016	2017
Population per physician (excl. dentists)	259	256	254	.
Population per dentist	1 445	1 393	1 411	.
Beds in hospitals, total	56 586	56 960	56 871	57 081
per 1 000 population	5.4	5.4	5.4	5.4
Cases of hospitalisation in hospitals (thous.)	2 287	2 250	2 235	2 211
Days of treatment in hospitals (thous. days)	14 356	14 027	13 796	13 594
Average time of treatment in hospitals (days)	6.3	6.2	6.2	6.1
Beds in balneological institutions	19 053	19 509	18 101	17 842
Patients in balneological institutions	380 170	347 377	364 648	366 264
Foreigners	152 391	126 458	149 346	151 663
New notified cases of incapacity for work per 100 sickness-insured persons	29.5	34.7	35.7	36.5
Average duration of 1 case of incapacity for work (calendar days)	45.8	42.7	43.0	42.6
Average percentage of incapacity for work	3.70	4.06	4.20	4.26

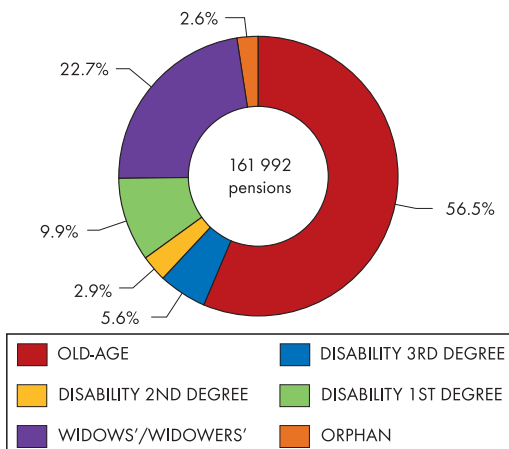
INCAPACITY FOR WORK DUE TO DISEASE OR INJURY



SOCIAL SECURITY

	2014	2015	2016	2017
Average numbers of the sickness insured (thous. persons)	4 464	4 507	4 571	4 672
Employees	4 358	4 418	4 482	4 582
Own-account workers (sickness-insured ones)	106	89	89	90
Expenditure on pension insurance benefits (CZK mil.)	376 406	385 520	389 167	404 368
Old-age pensions	305 690	314 108	316 710	333 760
Disability pensions	43 689	44 165	42 488	43 574
Widows' and widowers' pensions	23 750	23 988	23 254	23 881
Expenditure on sickness insurance scheme benefits (CZK mil.)	22 077	24 110	26 284	28 316
Sickness benefit	13 881	15 428	16 985	18 290
Carer's allowance	854	1 062	1 180	1 402
Statutory maternity pay	7 334	7 611	8 110	8 616
Expenditure on state social support benefits and foster care benefits (CZK mil.)	37 500	37 632	37 806	37 266
Child allowance	3 207	3 057	2 817	2 479
Parental allowance	22 913	22 480	22 625	22 984
Care benefit (CZK mil.)	20 402	21 167	23 046	25 120
Expenditure on unemployment benefits (CZK mil.)	9 262	8 276	8 220	7 819

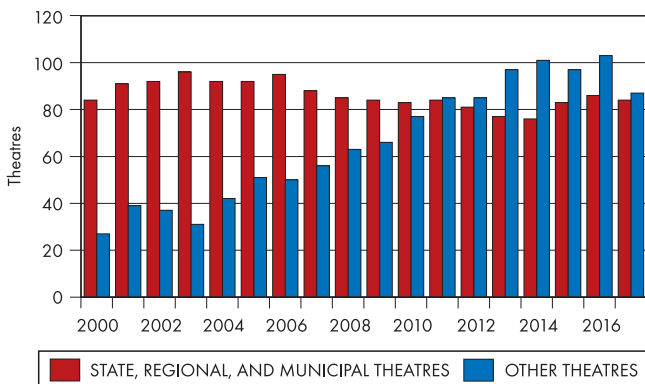
NEW PENSIONS GRANTED IN 2017



CULTURE

	2014	2015	2016	2017
State, regional, and municipal theatres	36	40	41	39
Permanent theatres	76	83	86	84
Seats	22 787	22 604	23 118	22 830
Theatre companies	66	66	71	67
Performances of Czech companies	12 499	12 956	13 842	13 285
Titles	1 302	1 392	1 415	1 401
First nights	352	369	357	390
Attendance (thous.)	3 566	3 632	3 708	3 500
Other theatres	116	115	134	136
Permanent theatres	101	97	103	87
Performances of Czech companies	15 752	16 159	17 886	17 787
Titles	1 580	1 562	1 771	1 792
First nights	321	276	351	339
Museums, monuments, and galleries	509	484	440	477
Expositions and exhibitions	6 199	6 319	6 239	6 166
Visitors (thous.)	11 651	11 768	13 072	13 486
Castles and other historical monuments used for cultural purposes	308	315	316	318
Visitors (thous.)	11 991	13 006	14 140	14 150
Public libraries				
Libraries	5 360	5 354	5 353	5 339
Branches of libraries	891	895	893	882
Library items (thous.)	64 741	64 832	64 778	64 691
Loans (thous.)	62 614	60 045	58 204	55 365
Registered readers (thous.)	1 436	1 412	1 372	1 384
Zoological gardens	15	15	15	16
Visitors (thous.)	5 742	5 720	6 209	6 176
Cinemas	629	633	701	754
Attendance (thous.)	11 559	12 958	15 622	15 233
Books, newspapers, and journals (published titles)				
Books	18 379	18 282	17 815	16 422
Newspapers and journals	5 127	5 182	5 234	5 298

PERMANENT THEATRES



ORGANIZATIONAL STRUCTURE OF THE NATIONAL ECONOMY

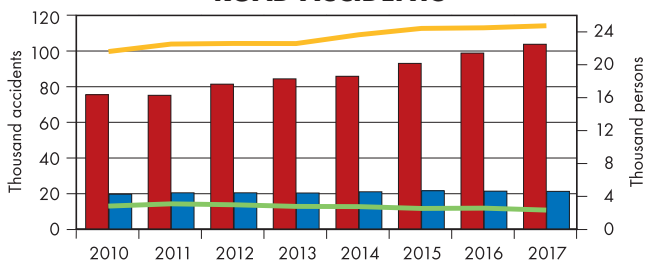
as at 31 December	2014	2015	2016	2017
Number of businesses, total	2 733 459	2 768 953	2 807 532	2 848 672
Legal persons	654 286	681 016	708 554	733 987
Natural persons	2 079 173	2 087 937	2 098 978	2 114 685
Legal form				
Private entrepreneurs in business under the Trade Act	1 798 199	1 825 627	1 849 487	1 892 729
Agricultural entrepreneurs – natural persons	35 242	43 005	44 599	46 010
Business companies and partnerships	419 444	440 757	462 099	482 658
Joint-stock companies	25 439	25 710	26 005	26 197
Cooperatives	15 154	14 831	14 446	14 103
State-owned enterprises	223	207	199	180
Sector				
Public enterprises and corporations	1 847	1 862	1 177	1 161
Private enterprises and corporations	439 147	460 135	481 050	501 388
Foreign-controlled	73 726	79 411	83 766	86 860
General government	17 499	17 451	18 084	18 047
Non-profit institutions serving households	137 521	140 480	144 828	147 860
Households	2 137 386	2 148 967	2 162 335	2 180 158
Size of business				
Number of employees				
0 (incl. businesses, which have not reported their numbers of employees)	2 449 884	2 486 133	2 519 143	2 562 770
1–5	200 067	198 755	203 611	199 884
6–19	52 926	53 349	53 699	54 254
20–249	28 386	28 457	28 779	29 394
250+	2 196	2 259	2 300	2 370
Businesses with identified activity	1 446 293	1 439 747	1 429 680	1 475 207
Selected legal forms				
State-owned enterprises	142	126	107	103
Joint-stock companies	20 731	20 330	19 721	21 006
Private entrepreneurs in business under the Trade Act	886 555	893 351	896 668	922 401

JUSTICE, CRIME, ACCIDENTS

	2014	2015	2016	2017
Persons prosecuted ¹⁾ (incl. cases resolved in shortened preparatory procedure)	103 417	91 421	84 834	77 112
Persons accused	96 227	84 327	78 131	70 811
Persons convicted, total ¹⁾	72 825	65 569	61 423	55 705
Females	10 442	9 882	9 959	9 347
Juveniles	1 593	1 403	1 312	1 231
Sentenced to imprisonment	9 568	9 531	9 485	8 402
Sentenced to probation order	50 203	43 802	39 251	33 379

¹⁾ Source: Ministry of Justice

ROAD ACCIDENTS



■ ACCIDENTS, TOTAL	■ WITH DEATH OR INJURY INVOLVED
— SLIGHTLY INJURED PERSONS	— SERIOUSLY INJURED PERSONS

	2014	2015	2016	2017
Road accidents, total ¹⁾	85 859	93 067	98 864	103 821
involving death or injury of a person	21 054	21 561	21 386	21 263
Killed persons (death within 30 days of the accident)	688	739	611	577
Seriously injured persons	2 762	2 540	2 580	2 339
Slightly injured persons	23 655	24 426	24 501	24 740
Property damage (CZK mil.)	4 933	5 439	5 804	6 313
Fires, total ²⁾	17 388	20 232	16 253	16 757
In: Agriculture ³⁾	594	3 424	1 875	2 289
Forestry ³⁾	265	1 901	1 092	1 076
Industry	757	861	1 054	1 018
Construction	61	116	100	108
Trade	143	196	160	151
Transport, communications	1 783	2 048	1 777	1 848
Households, residential houses ³⁾	2 652	5 279	5 012	4 894
Killed persons	114	115	124	92
Injured persons	1 179	1 449	1 291	1 392
Rescued persons	6 693	10 997	13 547	10 033
Direct damage (CZK mil.)	2 198	2 496	3 378	3 653
Salvaged values (CZK mil.)	11 534	11 093	11 654	9 674

¹⁾ Source: Police Presidium of the CR, Directorate of the Traffic Police Service

²⁾ Source: Ministry of the Interior – General Directorate of the Fire and Rescue Service of the CR

³⁾ In 2010–2014 fires involving no damage, deaths, and injuries were not included.

SELECTED CZSO PUBLICATIONS

Statistical Yearbook of the Czech Republic 2018

Data on the state and development of the most important areas of economic, social, and cultural life in the Czech Republic; long-term time series (2000–2017) of selected national economy indicators. Czech-English version.

Information Economy in Figures 2018

A comprehensive overview of available ICT-related statistical indicators about the developments of the information and digital economy in the Czech Republic and where possible also in other, mainly EU, countries. English version. Free.

Indicators of Social and Economic Development of the Czech Republic

Time series (2000–2018) and quarterly (monthly) data on selected national economy indicators since 2010. Czech-English version.

External Trade of the Czech Republic – annual data 2017

Final data on external trade of the Czech Republic in total, by group of countries and commodity structure. Czech-English version.

Statistika: Statistics and Economy Journal

Professional peer reviewed scientific quarterly journal of the Czech Statistical Office. Since 2011 in English version only.

Foreigners in the Czech Republic 2018

Time series of statistical data from many areas relating to foreigners in the Czech Republic, incl. data for 2017. Czech-English version. Free. Preparation of the publication is funded from resources allocated to the CZSO for integration of foreigners.

Demographic Yearbook of the Czech Republic 2017

Source publication with detailed information on natural change and migration of the population incl. causes of death according to the ICD-10. Published without interruption since 1919. Czech-English version.

First Hand Figures Prague 2017

Promotion booklet containing the first available data for Prague, its administrative districts and city parts for 2017. English version. Free.

Czech Republic in International Comparison 2018

International comparison of the Czech Republic with other countries, especially Member States of the European Union. A wide range of data from many statistical domains. Czech-English version.

Food Consumption 2017

Total food consumption per capita in the period 2008–2017. Czech-English version.

If you are interested in the above-mentioned or other publications, contact us at:

Czech Statistical Office

Information Services Unit

Headquarters

Na padesátém 81

100 82 Praha 10

phone: (+420) 274 052 733

e-mail: objednavky@czso.cz