

Contents

Municipality and region comparison tool in CentropeSTATISTICS

Monitoring of the settlement development of Stadregion*

New digital brochure "Centrope in Figures"

Statistical Yearbooks of Burgenland, Lower Austria and Vienna

---+---+---+---+---

CentropeMAP
CentropeSTATISTICS
Cross-Border
Newsletter

Edition no. 09
December 2017

---+---+---+---+---

CentropeMAP
CentropeSTATISTICS

is a cooperation project
of



- ● ● CONSULTING
- ● ● RESEARCH
- ● ● PROJECTS

www.centropemap.org



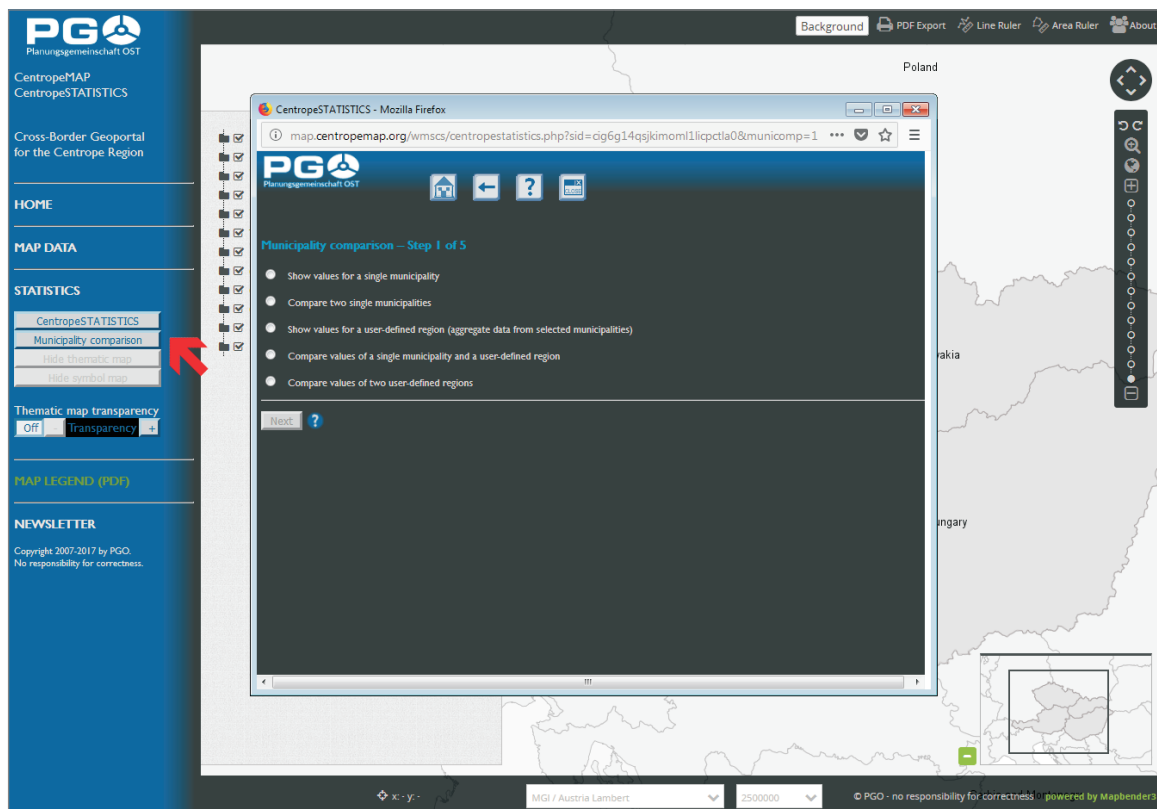
All datasets, maps, charts and illustrations in this newsletter are either part of the web portal www.centropemap.org or are courtesy of the statistical offices of the Czech Republic, Hungary, Slovakia, Burgenland, Lower Austria and Vienna.

Any redistribution of this newsletter is highly appreciated!

Imprint:
Planungsgemeinschaft Ost
Rockhgasse 6/3, 1010 Wien
post.pgo@noel.gv.at
No responsibility for correctness.

Harmonised statistics across the borders

Municipality and region comparison tool in CentropeSTATISTICS



Have you ever been asked how many inhabitants or how many employable people live in your municipality, compared to its neighbouring municipality or the surrounding region?

Neighbours do not always live in the same administrative district or region, sometimes even in another country. Administrative boundaries disappear more and more in practise, however, they are still a limiting factor in statistics.

The new municipality and region comparison tool in CentropeSTATISTICS will help you compare a municipi-

pality or a region with another municipality or region. The main aspects are flexible application and customising options for users from the Centrope region – for example, you can automatically query adjacent municipalities for your selection or build a user-defined region by selecting municipalities via a map. These functions are currently available:

- comparison of single municipalities or municipalities and regions,
- creation of tables and charts for selected statistical indicators and time series of Centro-

peSTATISTICS (will be continuously extended),

- display of the individual query results on the web or as PDF download.

The municipality and region comparison tool is directly available from the CentropeMAP geoportal (click the "Municipality comparison" button in the left menu, see image above); more content will be added in the future.

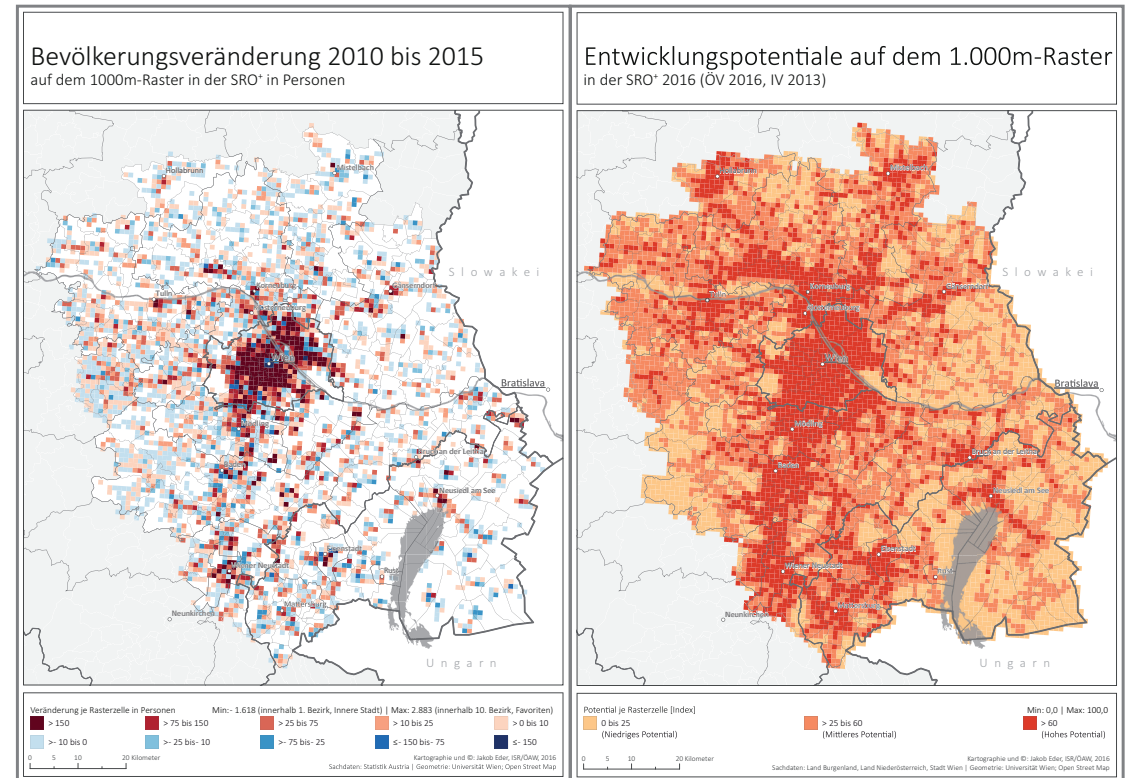
*DI Clemens Beyer,
CentropeMAP team,
e-mail: beyer@corp.at*

Monitoring of the settlement development of Stadtregion⁺

The city region Stadtregion⁺ in Vienna, Lower Austria and Burgenland has been growing more rapidly than expected. The comprehensive structural analysis of the future spatial development of the city region, which was carried out in 2008, was monitored in 2015/2016.

Planungsgemeinschaft Ost (PGO) commissioned the Austrian Academy of Sciences to look into the following issues based on current facts and figures and on the current population estimates, compiled by the Austrian Conference on Spatial Planning (ÖROK): How many persons have moved to the region? Which migration flows impact the growth of the city region? Which areas have the highest growth? What are the conclusions for planning?

The most important result was that the real growth has outpaced the estimates. In addition to other popular areas in the city region, Vienna's population has increased more rapidly than expected. In a first step, the quantitative analysis answered the following questions: What was the concrete development of migration dynamics? Which migration flows impact the



demographic development? Which areas have the highest growth rate?

It is worth noting that the population growth of the past few years has mainly taken place in high potential areas, which had been identified as such by experts (The classification of a high potential area depends on the provision of services and infrastructure and the accessibility on the basis of small scale raster data).

Generally speaking, the concept of the “structured

city region” is still valid. Policies and regional planning measures, which had a great influence, were listed in the results of the monitoring. An analysis of the measures has also facilitated the definition of recommendations and areas for action for the future development of the city region.

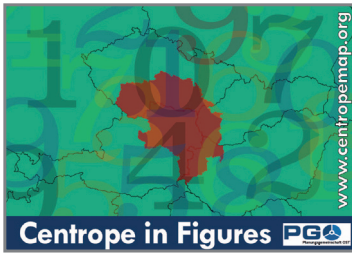
For more information about the results of the monitoring and the concept of a “structured city region” as well as areas for action, please visit [\[www.planungsgemeinschaft-ost.at/no_cache/studien/ansicht/detail/studie/monitoring-der-siedlungsentwicklung-in-der-stadtregion/\]\(http://www.planungsgemeinschaft-ost.at/no_cache/studien/ansicht/detail/studie/monitoring-der-siedlungsentwicklung-in-der-stadtregion/\)](http://www.pla-</p>
</div>
<div data-bbox=)



PGO-Team
e-mail: post.pgo@noel.gv.at

New digital brochure “Centrope in Figures”

Each national statistical office has its own publication in which the country or region is presented to the public by means of tables, thematic maps, and figures. The cross-border database CentropeSTATISTICS offers a publication with harmonised datasets for the whole Centrope region comprising parts of four neighbouring countries.

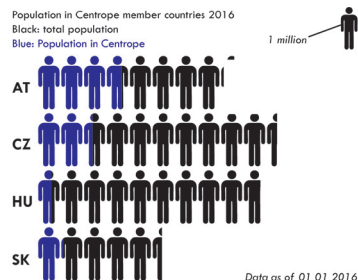


Web link:
<http://www.centropemap.org/cif>

The Centrope region at a glance

CentropeMAP/STATISTICS is a cross-border information system and free geoportal of the Austrian Planning Association East (PGO) which gives planners and decision makers a better overview of the Centrope region. The Centrope region consists of adjacent counties and states along the borders between Austria, the Czech Republic, Hungary, and the Slovak Republic. This publication aims to present selected data from CentropeSTATISTICS to show the development of this cross-border region in the last 10–15 years. More info and data can be found at our website www.centropemap.org.

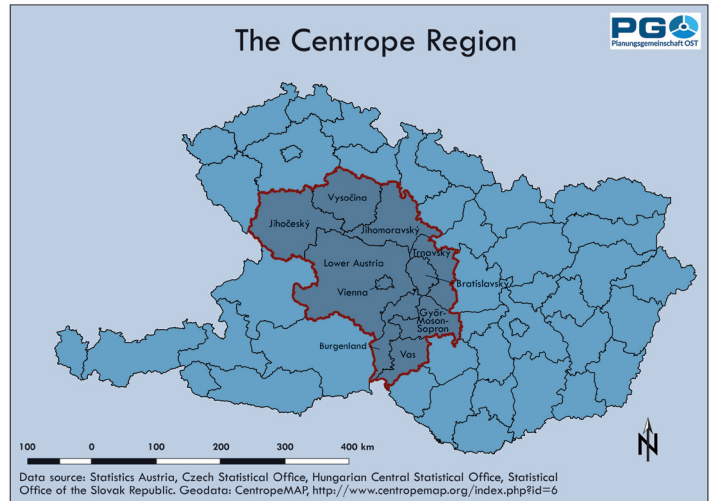
The location of the CENTROPE region, at the intersection of four countries, is unique in Europe. The two EU capital cities of Bratislava and Vienna, whose agglomerations are separated by a mere 50 kilometres, the cities of Brno and Győr, as regionally significant urban centres, as well as numerous other eminent and attractive cities, are the powerhouses of an economically and culturally expanding European region.



0.01.01 © 2017 – no responsibility for correctness.

Country	Area	Area in Centrope region	Municipalities	Centrope parts of the country	Inhabitants 2016	Inhabitants in Centrope (absolute)	Percentage of Centrope inhabitants
Austria	83 880 km ²	23 562 km ² (38.3 %)	767	3 federal states Vienna, Lower Austria, Burgenland	8 690 076	3 784 928	47.25 %
Czech Republic	79 000 km ²	24,099 km ² (39.1 %)	2 000	3 regions South Bohemia, South Moravia, Vysočina	10 553 843	2 322 334	29.00 %
Hungary	92 990 km ²	7 713 km ² (12.5 %)	399	2 counties Győr-Ménfőcsanak, Vas	9 830 485	708 906	8.85 %
Slovak Republic	49 033 km ²	6 216 km ² (10.1 %)	340	2 regions Bratislava, Trnava	5 426 252	1 192 985	14.90 %
Centrope*		61 590 km ² (100 %)	3 506	10 subregions of 4 countries		8 009 153	100.00 %

* Centrope as seen by CentropeMAP and CentropeSTATISTICS



The brochure “Centrope in Figures” is designed as online publication consisting of a collection of single map sheets. The map sheets are listed in

the table of contents and will be regularly updated so that the latest maps, charts, and figures will be available in the main brochure. Older map

sheets will be available separately in an archive section.

DI Clemens Beyer,
CentropeMAP team,
e-mail: beyer@corp.at

Statistical Yearbooks of Burgenland, Lower Austria and Vienna

The **Statistical Yearbook Burgenland** in its 36th edition will be published at the beginning of 2018. Tables, charts and maps were extended to the reporting year 2016. Nature, environment, population, economy, tourism and many more thematic areas are covered in time series and partly at municipal level.

The new **Statistical Handbook of Lower Austria** has been published and shows various development trends underlined with current facts and figures regarding population, health, environment, economy, energy, climate, education, culture and politics. The

output of these analyses is descriptively depicted with tables, charts, and maps. The handbook can be ordered in a printed edition and is available for download as PDF version (see web link or QR code).

For more information please contact the Department for

Spatial Planning and Regional Policy/Statistics via e-mail: post.ru2statistik@noel.gv.at.

Vienna in Figures gives a brief overview in 8 chapters and on 24 pages and serves as an invitation to learn more about the City of Vienna. The brochure is available in English and German

(see web link or QR code).

The comprehensive **statistical yearbook of Vienna** describes demographic, social and economic conditions and shows structures and development trends. Tables and illustrations are complemented with explanatory texts and analyses. The yearbook is available for download (see web link or QR code).



Web link: http://www.noel.gv.at/noel/Zahlen-Fakten/Statistisches_Handbuch_41._Jahrgang_2017.html

<https://www.wien.gv.at/statistik/publikationen/jahrbuch.html>,
<https://www.wien.gv.at/statistik/publikationen/wien-in-zahlen.html>