

CZECH REPUBLIC IN 2012

| | |
|--|-----------------------------|
| GDP per capita | 365 955 CZK, current prices |
| Inflation rate | 3.3% |
| Registered unemployment rate (as at 31 December) | 9.36% |
| Average monthly gross wage of employees in the national economy ¹⁾ | CZK 25 112 |
| Average old-age pension (as at 31 December) | CZK 10 422 |

¹⁾ FTE, preliminary data from a quarterly survey.

| | | | |
|--|--|--------------------------|--|
| Largest municipality (as at 31 December) | <i>PRAHA</i> | 1 246 780 inhabitants | Capital City |
| Smallest municipality (as at 31 December) | <i>ČILÁ</i> <i>VYSOKÁ LHOTA</i> | 18 inhabitants | <i>Rokycany</i> District <i>Pelhřimov</i> District |
| Highest settlement | <i>FILIPOVA HUŤ</i> | Altitude 1 093 m | <i>Klatovy</i> District |
| Lowest settlement | <i>HŘENSKO</i> | Altitude 130 m | <i>Děčín</i> District |
| Highest point | Mount <i>SNĚŽKA</i> | Altitude 1 602 m | <i>Krkonoše</i> Mountains |
| Lowest point | Discharge of the <i>LABE</i> River at <i>Hřensko</i> | Altitude 115 m | <i>Děčín</i> District |
| Deepest chasm | <i>HRANICKÁ</i> Abyss | 442.5 m | <i>Přerov</i> District |
| Largest national park | <i>ŠUMAVA</i> National Park | 690.3 km ² | <i>Šumava</i> Mountains |
| Largest protected landscape area | <i>BESKYDY PLA</i> | 1 160 km ² | <i>Beskydy</i> Mountains |
| Longest river | <i>VLTAVA</i> River | 433 km | Bohemia |
| Largest catchment area | <i>LABE</i> River catchment | 51 103.9 km ² | Bohemia |
| Largest natural lake maximum depth | Lake <i>ČERNÉ</i> | 18.4 ha 39.8 m | <i>Šumava</i> Mountains |
| Largest manmade lake maximum depth | Lake <i>ROŽMBERK</i> | 489 ha 6.2 m | <i>Jindřichův Hradec</i> District |
| Largest dam reservoir maximum depth | Dam Lake <i>LIPNO</i> | 4 870 ha 20 m | <i>Šumava</i> Mountains |
| Hottest thermal spring | <i>VŘÍDLO</i> Spring | 72 °C | <i>Karlovy Vary</i> |
| Highest daily maximum air temperature | 20 August | 40.4 °C | <i>Dobřichovice</i> <i>Praha-západ</i> District |
| Lowest daily minimum air temperature | 6 February | -38.1 °C | <i>Rokytská slat'</i> <i>Klatovy</i> District |
| Highest daily precipitation | 28 July | 104.8 mm | <i>Český Krumlov</i> <i>Český Krumlov</i> District |
| Deepest snow cover | 20–23 February | 260 cm | <i>Labská bouda</i> <i>Trutnov</i> District |

COMPARISONS OF EU COUNTRIES IN 2012¹⁾

| | EU28 | Belgium | Bulgaria | Czech Republic | Denmark | Estonia | Finland | France | Croatia | Ireland | Italy | Cyprus | Lithuania | Latvia | Luxembourg | Hungary | Malta | Germany | Netherlands | Poland | Portugal | Austria | Romania | Greece | Slovakia | Slovenia | United Kingdom | Spain | Sweden | |
|---|----------------------|--------------------|--------------------|----------------|----------------------|--------------------|---------|-------------------|--------------------|----------------------|--------------------|--------------------|--------------------|--------------------|----------------------|---------|--------------------|--------------------|--------------------|-------------------|--------------------|----------------------|--------------------|--------------------|----------|--------------------|--------------------|-------------------|----------------------|--|
| GDP per capita in PPS, EU28 = 100 | 100 | 119 | 47 | 79 | 125 | 69 | 115 | 108 | 61 | 130 | 99 | 91 | 70 | 62 | 272 | 66 | 86 | 122 | 129 | 66 | 75 | 131 | 49 | ²⁾ 75 | 75 | 82 | 110 | 97 | 129 | |
| Real GDP growth rate | -0.4 | -0.3 | 0.8 | -1.3 | -0.4 | 3.2 | -0.8 | 0.0 | ²⁾ -2.0 | 0.9 | -2.4 | -2.4 | 3.7 | 5.6 | 0.3 | -1.7 | ²⁾ 1.0 | 0.7 | -1.2 | 1.9 | -3.2 | 0.9 | 0.7 | ²⁾ -6.4 | 2.0 | -2.3 | 0.2 | -1.4 | 0.7 | |
| Labour productivity per person employed, EU27 = 100 (GDP in PPS per person employed) | 99.9 | 127.4 | 46.4 | 72.0 | 111.4 | 67.1 | 107.6 | 115.1 | 80.2 | 142.7 | 107.0 | 92.8 | 71.8 | ²⁾ 63.4 | 167.8 | 70.4 | 92.5 | 105.3 | 108.9 | 72.2 | 75.2 | 115.2 | 50.1 | ²⁾ 91.7 | 81.1 | 79.4 | 104.8 | 111.2 | 116.0 | |
| General government gross debt (% of GDP) | ³⁾ 85.3 | 99.6 | 18.5 | 45.8 | 45.8 | 10.1 | 53.0 | 90.2 | . | 117.6 | 127.0 | 85.8 | 40.7 | 40.7 | 20.8 | 79.2 | 72.1 | 81.9 | 71.2 | 55.6 | 123.6 | 73.4 | 37.8 | 156.9 | 52.1 | 54.1 | 90.0 | 84.2 | 38.2 | |
| Gross domestic expenditure on R&D (GERD) (% of GDP; in 2011) | ⁴⁾ 2.02 | ²⁾ 2.04 | ²⁾ 0.57 | 1.85 | ^{2,4)} 3.09 | ²⁾ 2.38 | 3.78 | 2.24 | 0.76 | ^{2,4)} 1.72 | ²⁾ 1.25 | ²⁾ 0.48 | ²⁾ 0.92 | ²⁾ 0.70 | ^{2,4)} 1.43 | 1.21 | ²⁾ 0.72 | ⁴⁾ 2.84 | ²⁾ 2.04 | 0.76 | ²⁾ 1.49 | ^{2,4)} 2.75 | 0.50 | . | 0.68 | ²⁾ 2.47 | ²⁾ 1.75 | 1.33 | ^{2,4)} 3.37 | |
| Inflation rate | ³⁾ 2.6 | 2.6 | 2.4 | 3.5 | 2.4 | 4.2 | 3.2 | 2.2 | ⁵⁾ 3.4 | 1.9 | 3.3 | 3.1 | 3.2 | 2.3 | 2.9 | 5.7 | 3.2 | 2.1 | 2.8 | 3.7 | 2.8 | 2.6 | 3.4 | 1.0 | 3.7 | 2.8 | 2.8 | 2.4 | 0.9 | |
| Comparative price levels, EU27 = 100 | 99.9 | 109.4 | 48.9 | 74.5 | 141.9 | 79.9 | 124.0 | 109.1 | 71.2 | 115.0 | 104.5 | 88.0 | 65.9 | 74.8 | 121.8 | 61.8 | 78.2 | 101.8 | 108.1 | 58.3 | 86.6 | 105.8 | 57.4 | 93.0 | 71.5 | 85.0 | 107.8 | 95.5 | 128.4 | |
| Employment rate (age group 15–64) | 64.1 | 61.8 | 58.8 | 66.5 | 72.6 | 67.1 | 69.4 | 63.9 | 50.7 | 58.8 | 56.8 | 64.6 | 62.2 | 63.1 | 65.8 | 57.2 | 59.0 | 72.8 | 75.1 | 59.7 | 61.8 | 72.5 | 59.5 | 51.3 | 59.7 | 64.1 | 70.1 | 55.4 | 73.8 | |
| Unemployment rate (age group 15–74) | 10.5 | 7.6 | 12.3 | 7.0 | 7.5 | 10.2 | 7.7 | 10.3 | 15.9 | 14.7 | 10.7 | 11.9 | 13.3 | 14.9 | 5.1 | 10.9 | 6.4 | 5.5 | 5.3 | 10.1 | 15.9 | 4.3 | 7.0 | 24.3 | 14.0 | 8.9 | 7.9 | 25.0 | 8.0 | |
| Long-term unemployment rate (12+ months) | 4.7 | 3.4 | 6.8 | 3.0 | 2.1 | 5.5 | 1.6 | 4.1 | 10.3 | 9.1 | 5.7 | 3.6 | 6.5 | 7.8 | 1.5 | 4.9 | 3.0 | 2.5 | 1.8 | 4.1 | 7.7 | 1.1 | 3.2 | 14.4 | 9.4 | 4.3 | 2.7 | 11.1 | 1.5 | |
| At-risk-of-poverty rate after social transfers ¹⁾ (in 2011) | 16.9 | 15.3 | 22.3 | 9.8 | 13.0 | 17.5 | 13.7 | 14.0 | 21.1 | 15.2 | 19.6 | 14.5 | 20.0 | 19.1 | 13.6 | 13.8 | 15.4 | 15.8 | 11.0 | 17.7 | 18.0 | 12.6 | 22.2 | 21.4 | 13.0 | 13.6 | 16.2 | 21.8 | 14.0 | |
| Public expenditure on education (% of GDP; in 2010) | ^{3,4)} 5.44 | 6.57 | 4.10 | 4.24 | 8.80 | 5.68 | 6.84 | 5.86 | 4.27 | 6.47 | 4.50 | 7.92 | 5.38 | 5.01 | . | 4.88 | 6.74 | 5.08 | 5.96 | 5.17 | 5.62 | 5.89 | 3.53 | . | 4.22 | 5.66 | 6.22 | 4.97 | 6.98 | |
| Life expectancy at birth (in 2011) | | | | | | | | | | | | | | | | | | | | | | | | | | | | | | |
| Males | ⁴⁾ 77.4 | ⁴⁾ 77.8 | 70.7 | 74.8 | 77.8 | 71.2 | 77.3 | 78.7 | 73.9 | 78.3 | ⁴⁾ 80.1 | 79.3 | 68.1 | 68.6 | 78.5 | 71.2 | 78.6 | 78.4 | 79.4 | 72.6 | 77.6 | 78.3 | ²⁾ 71.0 | 78.5 | 72.3 | 76.8 | 79.1 | 79.4 | 79.9 | |
| Females | ⁴⁾ 83.2 | ⁴⁾ 83.2 | 77.8 | 81.1 | 81.9 | 81.3 | 83.8 | 85.7 | 80.4 | 82.8 | ⁴⁾ 85.3 | 83.1 | 79.3 | 78.8 | 83.6 | 78.7 | 82.9 | 83.2 | 83.1 | 81.1 | 84.0 | 83.9 | ²⁾ 78.2 | 83.1 | 79.8 | 83.3 | 83.1 | 85.4 | 83.8 | |
| Greenhouse gas emissions, 1990 = 100 (in 2011) | 83 | 85 | 60 | 68 | 83 | 52 | 97 | 89 | 89 | 106 | 95 | 147 | 44 | 45 | 100 | 67 | 151 | 74 | 95 | 88 | 116 | 108 | 50 | 110 | 63 | 106 | 75 | 126 | 86 | |
| Municipal waste generated (kg per capita; in 2011) | 499 | 464 | 375 | 320 | 719 | 298 | 505 | ⁴⁾ 527 | 373 | ⁴⁾ 623 | ⁴⁾ 535 | ⁴⁾ 658 | ⁴⁾ 442 | 350 | ⁴⁾ 687 | 382 | 583 | ⁴⁾ 597 | 596 | ⁴⁾ 315 | ⁴⁾ 487 | ⁴⁾ 552 | ⁴⁾ 365 | 496 | 327 | 411 | ⁴⁾ 518 | ⁴⁾ 498 | 460 | |
| Energy intensity of the economy (kgoe per 1 000 EUR; in 2011) | ³⁾ 144.2 | 181.9 | 712.4 | 355.9 | 90.7 | 505.4 | 212.0 | 143.4 | 231.7 | 82.1 | 121.5 | 173.4 | 302.3 | 324.0 | 136.0 | 282.1 | 201.8 | 129.0 | 146.7 | 317.7 | 153.1 | 126.1 | 392.1 | 155.1 | 349.1 | 230.2 | 103.6 | 135.0 | 147.6 | |
| Share of electricity generated from renewable energy sources in gross electricity consumption (in 2011) | ³⁾ 20.4 | 9.0 | 9.8 | 10.3 | 38.8 | 12.6 | 27.7 | 12.8 | 25.6 | 19.4 | 23.6 | 2.5 | 9.6 | 41.9 | 3.0 | 6.4 | 0.0 | 20.4 | 10.1 | 8.3 | 43.6 | 55.2 | 27.1 | 13.0 | 17.0 | 26.2 | 9.2 | 30.2 | 58.7 | |

¹⁾ Source: Eurostat; EU28 = European Union 28 countries; in % except for life expectancy at birth (years), municipal waste generated (kg per capita), and energy intensity of the economy (kgoe per 1 000 EUR).

²⁾ Share of the population with an equivalised disposable income below the risk-of-poverty threshold, which is set at 60% of the national median equivalised disposable income (after social transfers).

³⁾ Preliminary data.

⁴⁾ EU27.

⁵⁾ Estimate.

⁶⁾ Definition differs.

MUNICIPALITIES OF THE CZECH REPUBLIC

as at 31 December 2012

| Municipality | Population | Municipality | Population |
|--------------------|------------|----------------------------|------------|
| Praha | 1 246 780 | Litvínov | 25 406 |
| Brno | 378 327 | Uherské Hradiště | 25 343 |
| Ostrava | 297 421 | Český Těšín | 25 106 |
| Plzeň | 167 472 | Hodonín | 25 094 |
| Liberec | 102 113 | Břeclav | 24 925 |
| Olomouc | 99 471 | Krnov | 24 518 |
| Ústí nad Labem | 93 747 | Litoměřice | 24 316 |
| České Budějovice | 93 467 | Sokolov | 23 981 |
| Hradec Králové | 93 035 | Nový Jičín | 23 731 |
| Pardubice | 89 467 | Havlíčkův Brod | 23 483 |
| Havířov | 77 371 | Chrudim | 23 182 |
| Zlín | 75 555 | Strakonice | 22 961 |
| Kladno | 68 551 | Kopřivnice | 22 649 |
| Most | 67 490 | Klatovy | 22 424 |
| Opava | 58 054 | Žďár nad Sázavou | 21 845 |
| Karviná | 57 842 | Jindřichův Hradec | 21 824 |
| Frydek-Místek | 57 523 | Bohumín | 21 726 |
| Jihlava | 50 598 | Vyškov | 21 496 |
| Teplice | 50 330 | Blansko | 20 841 |
| Děčín | 50 289 | Kutná Hora | 20 470 |
| Karlovy Vary | 50 172 | Náchod | 20 434 |
| Chomutov | 49 187 | Jirkov | 20 230 |
| Jablonec nad Nisou | 45 305 | Mělník | 19 346 |
| Přerov | 44 824 | Žatec | 19 203 |
| Prostějov | 44 330 | Beroun | 18 919 |
| Mladá Boleslav | 44 229 | Hranice | 18 745 |
| Třebíč | 37 324 | Louny | 18 575 |
| Česká Lípa | 36 957 | Otrokovice | 18 327 |
| Třinec | 36 401 | Kadaň | 18 030 |
| Tábor | 35 024 | Kralupy nad Vltavou | 17 855 |
| Znojmo | 33 964 | Brandýs n. L.-St. Boleslav | 17 503 |
| Příbram | 33 553 | Ostrov | 17 235 |
| Cheb | 32 823 | Svitavy | 17 027 |
| Kolín | 31 077 | Bruntál | 16 925 |
| Trutnov | 30 860 | Uherský Brod | 16 777 |
| Orlová | 30 722 | Rožnov pod Radhoštěm | 16 750 |
| Písek | 29 769 | Benešov | 16 541 |
| Kroměříž | 28 926 | Rakovník | 16 427 |
| Šumperk | 26 870 | Neratovice | 16 415 |
| Vsetín | 26 817 | Jičín | 16 300 |
| Valašské Meziříčí | 26 623 | Pelhřimov | 16 269 |

REGIONS OF THE CZECH REPUBLIC

| Abbreviation | Name of region | Abbreviation | Name of region |
|--------------|----------------|--------------|-----------------|
| PHA | Hl. m. Praha | HKK | Královéhradecký |
| STČ | Středočeský | PAK | Pardubický |
| JHČ | Jihočeský | VYS | Vysočina |
| PLK | Plzeňský | JHM | Jihomoravský |
| KVK | Karlovarský | OLK | Olomoucký |
| ULK | Ústecký | ZLK | Zlínský |
| LBK | Liberecký | MSK | Moravskoslezský |

REGIONAL COMPARISONS IN 2012

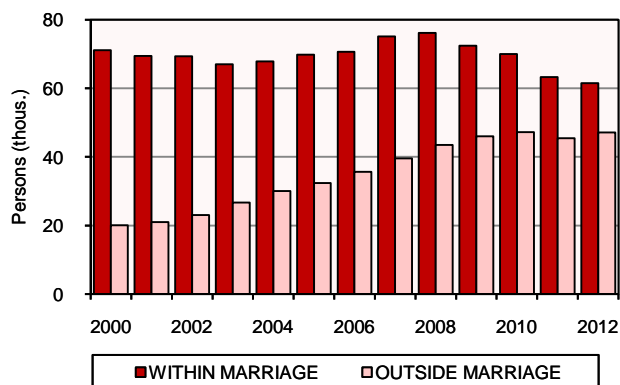
| | Unit | CR total | Regions | | | | | | | | | | | | | |
|---|-----------------|------------|-----------|-----------|---------|---------|---------|---------|---------|---------|---------|---------|-----------|---------|---------|-----------|
| | | | PHA | STĀ | JHĀ | PLK | KVK | ULK | LBK | HKK | PAK | VYS | JHM | OLK | ZLK | MSK |
| Area | km ² | 78 866 | 496 | 11 015 | 10 056 | 7 561 | 3 314 | 5 335 | 3 163 | 4 759 | 4 519 | 6 796 | 7 195 | 5 267 | 3 963 | 5 427 |
| Population | | | | | | | | | | | | | | | | |
| Mid-year population | persons | 10 509 286 | 1 243 695 | 1 285 945 | 636 381 | 572 016 | 302 484 | 827 317 | 438 593 | 553 290 | 516 409 | 511 627 | 1 167 142 | 637 837 | 588 299 | 1 228 251 |
| Females | persons | 5 348 373 | 639 430 | 650 891 | 322 936 | 289 108 | 153 350 | 418 542 | 223 555 | 281 367 | 261 431 | 257 758 | 595 903 | 326 193 | 300 707 | 627 202 |
| Live births per 1 000 population | % | 10.3 | 11.4 | 11.2 | 10.5 | 10.1 | 9.3 | 9.9 | 10.5 | 9.9 | 10.4 | 10.1 | 10.6 | 9.9 | 9.3 | 9.6 |
| Deaths per 1 000 population | % | 10.3 | 10.0 | 9.9 | 10.2 | 10.5 | 10.2 | 10.8 | 10.0 | 10.5 | 10.5 | 10.2 | 10.0 | 10.5 | 10.4 | 10.7 |
| Migration increase/decrease per 1 000 population | % | 1.0 | 2.7 | 8.4 | 0.5 | 2.1 | -3.9 | -0.6 | -0.5 | -1.0 | 0.1 | -1.3 | 1.5 | -1.0 | -1.3 | -2.2 |
| Foreigners in the CR (without asylum seekers as at 31 December) | persons | 435 946 | 162 715 | 56 810 | 14 838 | 23 866 | 18 388 | 30 461 | 16 604 | 13 269 | 11 115 | 7 752 | 36 690 | 9 807 | 7 968 | 23 117 |
| Gross domestic product (data for 2011) | | | | | | | | | | | | | | | | |
| Share of the region in GDP, CR = 100 | % | 100.0 | 24.9 | 10.8 | 5.1 | 4.9 | 2.1 | 6.3 | 3.2 | 4.6 | 4.0 | 4.1 | 10.4 | 4.7 | 4.8 | 10.2 |
| Gross domestic product per capita | CZK | 364 249 | 768 173 | 325 797 | 306 576 | 326 513 | 260 083 | 289 851 | 279 733 | 315 307 | 297 755 | 303 263 | 341 024 | 281 540 | 308 642 | 317 835 |
| CR = 100 | % | 100.0 | 210.9 | 89.4 | 84.2 | 89.6 | 71.4 | 79.6 | 76.8 | 86.6 | 81.7 | 83.3 | 93.6 | 77.3 | 84.7 | 87.3 |
| EU27 = 100 (PPS) | % | 80.1 | 168.9 | 71.6 | 67.4 | 71.8 | 57.2 | 63.7 | 61.5 | 69.3 | 65.5 | 66.7 | 75.0 | 61.9 | 67.9 | 69.9 |
| Disposable income of households per capita | CZK | 190 389 | 250 121 | 206 669 | 181 215 | 187 924 | 171 785 | 170 925 | 178 750 | 179 715 | 177 064 | 180 102 | 184 823 | 172 415 | 178 580 | 176 135 |
| Labour market (as at 31 December) | | | | | | | | | | | | | | | | |
| Registered unemployment rate | % | 9.36 | 4.52 | 7.52 | 8.36 | 7.31 | 10.84 | 14.02 | 10.26 | 8.61 | 9.16 | 10.23 | 10.42 | 11.86 | 10.42 | 12.34 |
| Unemployed job applicants | persons | 545 311 | 35 562 | 53 605 | 27 763 | 23 210 | 17 907 | 59 853 | 23 330 | 24 519 | 24 766 | 26 689 | 64 975 | 39 070 | 31 567 | 78 178 |
| Long-term applicants (>12 months) | persons | 192 234 | 9 842 | 18 206 | 7 908 | 7 584 | 6 856 | 25 911 | 8 748 | 7 065 | 7 866 | 9 191 | 24 110 | 15 401 | 10 966 | 32 580 |
| Job vacancies | | 34 893 | 9 994 | 4 044 | 2 450 | 2 417 | 1 027 | 1 786 | 1 831 | 1 121 | 1 857 | 664 | 2 289 | 809 | 1 269 | 3 335 |
| Agriculture | | | | | | | | | | | | | | | | |
| Harvest: Wheat | thous. tonnes | 3 518.9 | 21.2 | 778.2 | 350.3 | 247.4 | 56.2 | 303.5 | 52.9 | 252.9 | 221.1 | 331.6 | 376.4 | 224.0 | 138.9 | 164.3 |
| Barley | thous. tonnes | 1 616.5 | 9.1 | 324.0 | 154.5 | 130.0 | 19.8 | 101.1 | 20.9 | 75.1 | 104.6 | 209.8 | 152.4 | 182.6 | 53.3 | 79.3 |
| Livestock (as at 1 April 2013) | | | | | | | | | | | | | | | | |
| Cattle | thous. heads | 1 352.8 | 150.7 | | 210.5 | 162.0 | 39.2 | 36.2 | 45.0 | 100.6 | 113.4 | 211.0 | 59.5 | 90.6 | 58.3 | 75.8 |
| Pigs | thous. heads | 1 586.6 | 301.9 | | 148.4 | 118.7 | 1.7 | 85.4 | 20.7 | 85.3 | 147.1 | 247.3 | 173.7 | 88.5 | 115.7 | 52.4 |
| Poultry | thous. heads | 23 265.4 | 4 999.3 | | 2 735.0 | 2 486.9 | 174.6 | 1 464.6 | 55.9 | 2 289.1 | 3 364.3 | 349.0 | 3 029.1 | 446.1 | 763.2 | 1 108.3 |
| Construction | | | | | | | | | | | | | | | | |
| Dwellings started | | 23 853 | 2 827 | 4 914 | 1 485 | 1 420 | 607 | 1 147 | 747 | 1 216 | 1 096 | 991 | 3 008 | 1 176 | 1 145 | 2 074 |
| Dwellings completed | | 29 467 | 4 024 | 5 900 | 1 983 | 1 444 | 543 | 1 271 | 1 252 | 1 384 | 1 295 | 1 276 | 3 770 | 1 490 | 1 137 | 2 698 |
| Average living floor area per completed dwelling | m ² | 76.3 | 61.1 | 83.5 | 78.7 | 75.8 | 84.6 | 80.9 | 74.7 | 77.1 | 80.6 | 84.4 | 70.9 | 75.8 | 84.8 | 76.6 |
| Health | | | | | | | | | | | | | | | | |
| Physicians in out-patient care establishments per 1 000 population (FTE; as at 31 December) | persons | 3.2 | 5.7 | 2.1 | 2.9 | 3.3 | 2.8 | 2.5 | 2.6 | 3.4 | 2.6 | 2.5 | 3.4 | 3.2 | 2.8 | 2.8 |
| Physicians in hospitals per 10 000 population (FTE; as at 31 December) | persons | 18.8 | 33.9 | 12.2 | 16.7 | 19.4 | 14.6 | 14.2 | 16.5 | 21.0 | 14.6 | 13.7 | 23.5 | 18.7 | 14.8 | 16.4 |
| Beds in hospitals per 1 000 population | | 5.6 | 7.4 | 4.5 | 5.3 | 6.0 | 4.9 | 6.0 | 5.9 | 6.0 | 5.0 | 5.2 | 6.2 | 4.9 | 4.8 | 4.9 |
| Average incapacity for work | % | 3.452 | 2.623 | 3.544 | 4.123 | 3.827 | 3.499 | 3.686 | 3.911 | 3.480 | 3.533 | 3.574 | 3.494 | 3.712 | 4.108 | 3.989 |
| Social security (as at 31 December) | | | | | | | | | | | | | | | | |
| Pension recipients, total | persons | 2 866 056 | 311 444 | 329 657 | 175 809 | 159 033 | 79 704 | 228 276 | 121 696 | 158 913 | 145 065 | 145 866 | 324 087 | 175 315 | 168 444 | 342 747 |
| Old-age pension recipients, total | persons | 1 726 523 | 204 465 | 197 838 | 103 663 | 95 357 | 49 711 | 132 501 | 73 538 | 96 879 | 86 423 | 86 506 | 191 753 | 107 014 | 98 065 | 202 810 |
| Average old-age pension | CZK | 10 774 | 11 512 | 10 864 | 10 667 | 10 723 | 10 532 | 10 684 | 10 699 | 10 660 | 10 552 | 10 496 | 10 645 | 10 454 | 10 543 | 10 838 |

POPULATION

| | 2009 | 2010 | 2011 | 2012 |
|---|---------|---------|---------|---------|
| Mid-year population (thous. persons) | 10 491 | 10 517 | 10 497 | 10 509 |
| Females | 5 341 | 5 356 | 5 344 | 5 348 |
| Foreigners in the Czech Republic ¹⁾ (thous. persons) | 433 | 424 | 434 | 436 |
| From EU27 countries | 137 | 135 | 151 | 161 |
| Births, total | 118 667 | 117 446 | 108 990 | 108 955 |
| Live births | 118 348 | 117 153 | 108 673 | 108 576 |
| Within marriage | 72 394 | 69 989 | 63 252 | 61 488 |
| Males | 60 368 | 60 220 | 55 789 | 55 536 |
| Per 1 000 population | 11.3 | 11.1 | 10.4 | 10.3 |
| Deaths | 107 421 | 106 844 | 106 848 | 108 189 |
| Per 1 000 population | 10.2 | 10.2 | 10.2 | 10.3 |
| Caused by diseases of the circulatory system | 54 100 | 53 590 | 52 725 | 53 046 |
| Natural increase/decrease | 10 927 | 10 309 | 1 825 | 387 |
| Per 1 000 population | 1.0 | 1.0 | 0.2 | 0.0 |
| Neonatal mortality (‰) | 1.6 | 1.7 | 1.7 | 1.6 |
| Infant mortality (‰) | 2.9 | 2.7 | 2.7 | 2.6 |
| Stillbirth rate (‰) | 2.7 | 2.5 | 2.9 | 3.5 |
| Life expectancy (years) | | | | |
| Males | 74.2 | 74.4 | 74.7 | 75.0 |
| Females | 80.1 | 80.6 | 80.7 | 80.9 |
| Marriages | 47 862 | 46 746 | 45 137 | 45 206 |
| Per 1 000 population | 4.6 | 4.4 | 4.3 | 4.3 |
| Divorces | 29 133 | 30 783 | 28 113 | 26 402 |
| Per 1 000 population | 2.8 | 2.9 | 2.7 | 2.5 |
| Abortions (incl. ectopic pregnancies) | 40 528 | 39 273 | 38 864 | 37 733 |
| Per 1 000 population | 3.9 | 3.7 | 3.7 | 3.6 |
| Induced abortions | 24 636 | 23 998 | 24 055 | 23 032 |
| Spontaneous abortions | 14 629 | 13 981 | 13 637 | 13 515 |

¹⁾ As at 31 December; excl. asylum seekers.

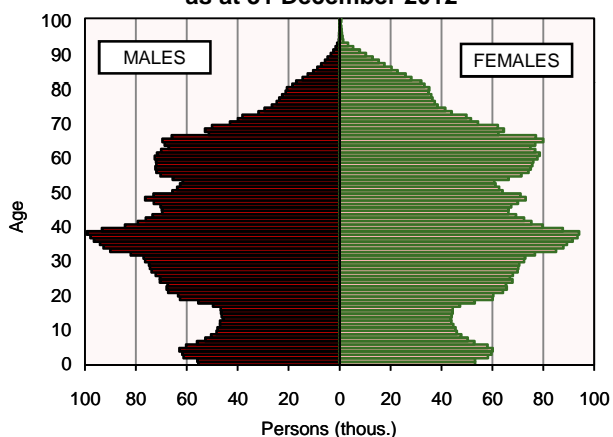
LIVE BIRTHS



POPULATION

| | 2009 | 2010 | 2011 | 2012 |
|--|--------|--------|--------|--------|
| Distribution of the population by age group as at 31 December (thous. persons) | | | | |
| Total | 10 507 | 10 533 | 10 505 | 10 516 |
| Aged 0–14 | 1 494 | 1 518 | 1 541 | 1 560 |
| Aged 15–64 | 7 414 | 7 379 | 7 263 | 7 188 |
| Aged 65+ | 1 599 | 1 636 | 1 701 | 1 768 |
| Males | 5 157 | 5 169 | 5 158 | 5 164 |
| Aged 0–14 | 767 | 779 | 791 | 801 |
| Aged 15–64 | 3 750 | 3 731 | 3 676 | 3 640 |
| Aged 65+ | 641 | 658 | 691 | 724 |
| Females | 5 350 | 5 364 | 5 347 | 5 352 |
| Aged 0–14 | 727 | 739 | 750 | 760 |
| Aged 15–64 | 3 664 | 3 647 | 3 587 | 3 548 |
| Aged 65+ | 958 | 978 | 1 010 | 1 044 |

AGE DISTRIBUTION OF THE POPULATION as at 31 December 2012



| | 2009 | 2010 | 2011 | 2012 |
|-----------------------------------|---------|---------|---------|---------|
| Internal migration of population | | | | |
| Migrants, total (persons) | 233 262 | 240 695 | 231 694 | 232 828 |
| Type of migration | | | | |
| From municipality to municipality | | | | |
| in the same district | 96 395 | 101 181 | 101 072 | 102 862 |
| From district to district | | | | |
| in the same region | 45 002 | 47 774 | 47 064 | 47 395 |
| From region to region | 91 865 | 91 740 | 83 558 | 82 571 |
| Per 1 000 population | | | | |
| Total | 23.8 | 22.9 | 22.1 | 22.2 |
| From municipality to municipality | | | | |
| in the same district | 10.0 | 9.6 | 9.6 | 9.8 |
| From district to district | | | | |
| in the same region | 4.5 | 4.5 | 4.5 | 4.5 |
| From region to region | 9.3 | 8.7 | 8.0 | 7.9 |

GROSS DOMESTIC PRODUCT¹⁾

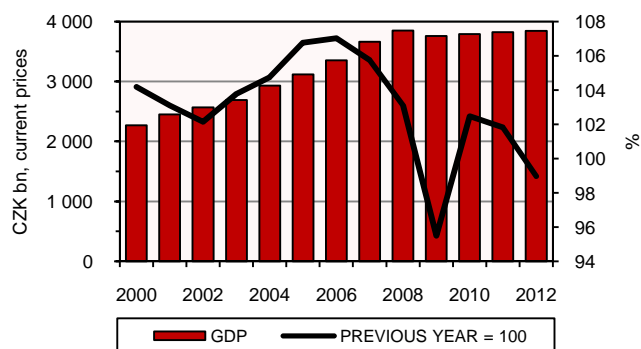
| | 2009 | 2010 | 2011 | 2012 |
|--|---------|---------|---------|---------|
| Gross domestic product (CZK bn, current prices) | 3 759.0 | 3 790.9 | 3 823.4 | 3 845.9 |
| Final consumption expenditure | 2 711.0 | 2 724.1 | 2 727.7 | 2 733.0 |
| Households | 1 874.4 | 1 889.2 | 1 907.7 | 1 916.2 |
| General government | 809.3 | 807.5 | 792.5 | 788.8 |
| Non-profit institutions | 27.3 | 27.4 | 27.5 | 28.0 |
| Gross fixed capital formation | 926.1 | 930.5 | 922.6 | 887.9 |
| Change in inventories and acquisitions less disposals of valuables | -29.7 | 9.2 | 14.5 | 9.7 |
| Exports of goods and services | 2 240.0 | 2 554.4 | 2 818.9 | 3 032.6 |
| Exports of goods ¹⁾ | 1 852.5 | 2 126.8 | 2 373.8 | 2 551.3 |
| Exports of services | 387.6 | 427.6 | 445.1 | 481.3 |
| Imports of goods and services | 2 088.4 | 2 427.3 | 2 660.3 | 2 817.3 |
| Imports of goods ²⁾ | 1 830.0 | 2 149.8 | 2 367.7 | 2 489.9 |
| Imports of services | 258.5 | 277.5 | 292.6 | 327.4 |
| GDP (% , previous year = 100) | 95.5 | 102.5 | 101.8 | 99.0 |
| GDP per capita | | | | |
| CZK, current prices | 358 288 | 360 444 | 364 249 | 365 955 |
| CZK, constant prices: 2005 | 330 887 | 338 227 | 345 053 | 341 120 |
| GDP – average exchange rate, current prices | | | | |
| USD mil. | 197 250 | 198 362 | 216 158 | 196 390 |
| USD per capita | 18 801 | 18 861 | 20 593 | 18 687 |
| GDP in purchasing power standards, current prices | | | | |
| PPS mil. | 203 592 | 205 997 | 211 448 | 213 307 |
| PPS per capita | 19 405 | 19 491 | 20 144 | 20 297 |
| GDP implicit deflator (previous year = 100) | 102.3 | 98.4 | 99.1 | 101.6 |

¹⁾ Data as at 1 October 2013.

¹⁾ FOB

²⁾ CIF

GDP



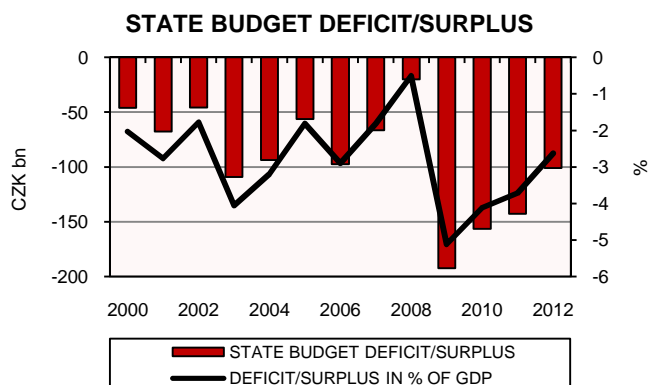
FINANCE¹⁾

| | 2009 | 2010 | 2011 | 2012 |
|---|-----------|-----------|-----------|-----------|
| Consolidated general government ¹⁾ | | | | |
| Revenue from operating activities and sales of non-financial assets | 1 383 944 | 1 422 802 | 1 429 589 | 1 498 294 |
| Expenditure for operating activities and purchase of non-financial assets | 1 631 493 | 1 602 321 | 1 600 976 | 1 591 179 |
| General government debt | 1 257 602 | 1 426 412 | 1 565 144 | 1 760 639 |
| State budget, total ²⁾ | | | | |
| Revenue, total | 974 615 | 1 000 377 | 1 012 755 | 1 051 387 |
| Tax revenue | 833 221 | 863 859 | 890 250 | 912 278 |
| Non-tax revenue | 29 227 | 30 017 | 25 950 | 32 542 |
| Capital revenue | 2 367 | 2 719 | 2 307 | 2 674 |
| Transfers received | 109 799 | 103 782 | 94 248 | 103 893 |
| Expenditure, total | 1 167 009 | 1 156 793 | 1 155 526 | 1 152 387 |
| Current expenditure | 1 033 845 | 1 026 569 | 1 036 654 | 1 038 764 |
| Capital expenditure | 133 164 | 130 224 | 118 872 | 113 623 |
| Revenue and expenditure of regions, municipalities, voluntary unions of municipalities, and Regional Councils of Cohesion Regions ²⁾ | | | | |
| Revenue, total | 396 633 | 424 707 | 404 104 | 378 849 |
| Tax revenue | 180 335 | 187 984 | 187 161 | 191 009 |
| Non-tax revenue | 30 415 | 32 184 | 33 290 | 33 456 |
| Capital revenue | 14 411 | 13 946 | 9 349 | 9 490 |
| Transfers received | 171 466 | 190 389 | 174 266 | 144 879 |
| Adjustment to revenue after consolidation | 7 | 204 | 39 | 16 |
| Expenditure, total | 422 576 | 425 896 | 406 805 | 377 322 |
| Current expenditure | 305 684 | 313 541 | 309 088 | 285 583 |
| Capital expenditure | 116 892 | 112 355 | 97 717 | 91 740 |

¹⁾ Source: Ministry of Finance of the CR; CZK million.

¹⁾ IMF methodology.

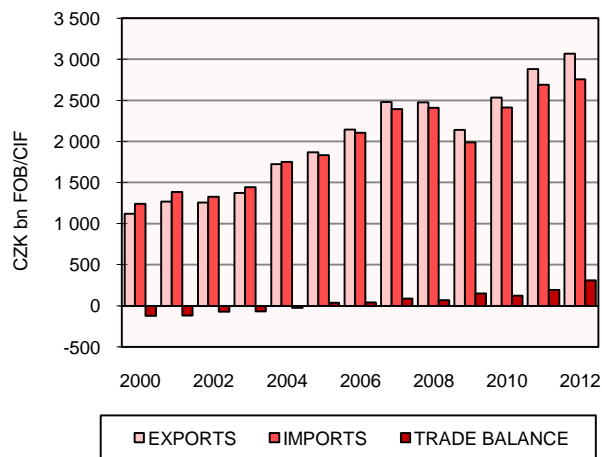
²⁾ National methodology.



EXTERNAL TRADE¹⁾

| | 2009 | 2010 | 2011 | 2012 |
|-------------------------------|---------|---------|---------|---------|
| Turnover, total (CZK bn) | 4 127.7 | 4 944.4 | 5 566.3 | 5 839.5 |
| EU28 | 3 150.2 | 3 664.9 | 4 116.9 | 4 275.3 |
| Euro area 17 | 2 502.3 | 2 892.1 | 3 249.2 | 3 339.7 |
| Non-EU | 968.4 | 1 268.9 | 1 440.4 | 1 549.3 |
| Unspecified | 9.1 | 10.5 | 9.0 | 14.8 |
| Exports, total (CZK bn, FOB) | 2 138.6 | 2 532.8 | 2 878.7 | 3 072.6 |
| EU28 | 1 820.3 | 2 134.9 | 2 398.1 | 2 495.7 |
| Euro area 17 | 1 437.6 | 1 678.6 | 1 889.4 | 1 948.0 |
| Non-EU | 317.3 | 396.3 | 478.8 | 574.3 |
| Unspecified | 1.0 | 1.7 | 1.8 | 2.6 |
| Imports, total (CZK bn, CIF) | 1 989.0 | 2 411.6 | 2 687.6 | 2 766.9 |
| EU28 | 1 329.8 | 1 530.1 | 1 718.8 | 1 779.6 |
| Euro area 17 | 1 064.7 | 1 213.5 | 1 359.8 | 1 391.8 |
| Non-EU | 651.1 | 872.6 | 961.6 | 975.0 |
| Unspecified | 8.1 | 8.9 | 7.2 | 12.3 |
| Trade balance, total (CZK bn) | 149.6 | 121.2 | 191.1 | 305.7 |
| EU28 | 490.5 | 604.8 | 679.3 | 716.1 |
| Euro area 17 | 373.0 | 465.2 | 529.5 | 556.2 |
| Non-EU | -333.8 | -476.3 | -482.8 | -400.7 |
| Unspecified | -7.1 | -7.2 | -5.4 | -9.7 |

TRENDS



¹⁾ Final data as at 28 August 2013.

EXTERNAL TRADE¹⁾

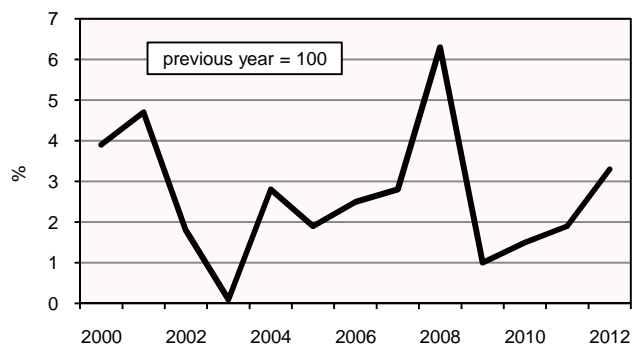
| External trade by SITC commodity section | CZK mil. FOB/CIF | | Share in total exports/imports (%) | |
|---|------------------|-----------|------------------------------------|-------|
| | 2011 | 2012 | 2011 | 2012 |
| Exports, total | 2 878 691 | 3 072 598 | 100.0 | 100.0 |
| Food and live animals | 91 355 | 108 057 | 3.2 | 3.5 |
| Beverages and tobacco | 17 120 | 19 873 | 0.6 | 0.6 |
| Crude materials, inedible, except fuels | 80 854 | 86 439 | 2.8 | 2.8 |
| Mineral fuels, lubricants and related materials | 109 585 | 118 705 | 3.8 | 3.9 |
| Animal and vegetable oils, fats and waxes | 4 752 | 9 177 | 0.2 | 0.3 |
| Chemicals and related products, n.e.s. | 180 176 | 189 474 | 6.3 | 6.2 |
| Manufactured goods classified chiefly by material | 507 775 | 532 504 | 17.6 | 17.3 |
| Machinery and transport equipment | 1 576 337 | 1 663 416 | 54.8 | 54.1 |
| Miscellaneous manufactured articles | 307 201 | 340 363 | 10.7 | 11.1 |
| Commodities and transactions n.e.c. in SITC | 3 536 | 4 591 | 0.1 | 0.1 |
| Imports, total | 2 687 563 | 2 766 888 | 100.0 | 100.0 |
| Food and live animals | 123 162 | 136 784 | 4.6 | 4.9 |
| Beverages and tobacco | 16 345 | 18 539 | 0.6 | 0.7 |
| Crude materials, inedible, except fuels | 80 072 | 79 306 | 3.0 | 2.9 |
| Mineral fuels, lubricants and related materials | 286 233 | 307 576 | 10.7 | 11.1 |
| Animal and vegetable oils, fats and waxes | 5 904 | 5 430 | 0.2 | 0.2 |
| Chemicals and related products, n.e.s. | 293 700 | 307 017 | 10.9 | 11.1 |
| Manufactured goods classified chiefly by material | 490 123 | 493 687 | 18.2 | 17.8 |
| Machinery and transport equipment | 1 126 862 | 1 143 512 | 41.9 | 41.3 |
| Miscellaneous manufactured articles | 259 514 | 267 494 | 9.7 | 9.8 |
| Commodities and transactions n.e.c. in SITC | 5 648 | 7 545 | 0.2 | 0.3 |

¹⁾ Final data as at 28 August 2013.

STANDARD OF LIVING

| | 2009 | 2010 | 2011 | 2012 |
|--|---------|---------|---------|---------|
| Gross household money income | | | | |
| – average per person per year (CZK) | 160 675 | 164 047 | 163 235 | 170 332 |
| Gross household money expenditure | | | | |
| – average per person per year (CZK) | 146 895 | 148 629 | 150 369 | 152 581 |
| Net household money income | | | | |
| – average per person per year (CZK) | 142 402 | 145 437 | 145 081 | 152 125 |
| Structure (%): From work | 66.0 | 65.6 | 63.5 | 63.4 |
| From social security | 27.5 | 27.8 | 29.7 | 28.4 |
| From other sources | 6.5 | 6.6 | 6.8 | 8.2 |
| Net household money expenditure | | | | |
| – average per person per year (CZK) | 128 622 | 130 019 | 132 215 | 134 374 |
| Household consumption expenditure (CZK) | 115 309 | 116 244 | 117 882 | 118 819 |
| Structure (%): | | | | |
| Food and non-alcoholic beverages | 19.3 | 19.3 | 19.1 | 20.0 |
| Alcoholic beverages, tobacco | 2.8 | 2.8 | 2.9 | 2.8 |
| Clothing and footwear | 5.0 | 5.0 | 4.8 | 4.7 |
| Housing, water, electricity, gas and other fuels | 21.4 | 21.7 | 22.4 | 22.1 |
| Furnishings, household equipment and routine household maintenance | 6.7 | 6.2 | 6.2 | 5.8 |
| Health | 2.7 | 2.7 | 2.7 | 2.8 |
| Transport | 10.5 | 10.7 | 10.9 | 10.7 |
| Communication | 4.6 | 4.6 | 4.5 | 4.4 |
| Recreation and culture | 10.3 | 10.2 | 9.8 | 9.5 |
| Education | 0.6 | 0.7 | 0.6 | 0.7 |
| Restaurants and hotels | 5.2 | 5.0 | 5.1 | 5.3 |
| Miscellaneous goods and services | 10.9 | 11.1 | 11.0 | 11.2 |
| Inflation rate (%) | 1.0 | 1.5 | 1.9 | 3.3 |
| Consumer price indices (2005 average = 100) | | | | |
| Households: Total | 113.3 | 114.9 | 117.1 | 121.0 |
| Pensioners' | 118.0 | 120.5 | 124.1 | 129.8 |

INFLATION RATE



CONSUMPTION OF THE POPULATION

| | 2008 | 2009 | 2010 | 2011 |
|---|-------|-------|-------|-------|
| Per capita consumption | | | | |
| Meat, total ¹⁾ (kg) | 80.4 | 78.8 | 79.1 | 78.6 |
| Pigmeat | 41.3 | 40.9 | 41.6 | 42.1 |
| Beef | 10.1 | 9.4 | 9.4 | 9.1 |
| Poultrymeat | 25.0 | 24.8 | 24.5 | 24.5 |
| Fish, total (kg) | 5.9 | 6.2 | 5.6 | 5.4 |
| Lard and bacon (kg) | 4.7 | 4.5 | 4.7 | 4.8 |
| Butter (kg) | 4.7 | 5.0 | 4.9 | 5.0 |
| Fats and oils ²⁾ (kg) | 23.0 | 23.0 | 23.4 | 23.5 |
| Edible vegetable fats and oils (kg) | 16.0 | 15.9 | 16.3 | 16.3 |
| Cow's drinking milk (l) | 55.2 | 58.0 | 55.9 | 55.9 |
| Milk and milk products ³⁾ (kg) | 242.7 | 249.7 | 244.0 | . |
| Cheese, total (kg) | 12.9 | 13.3 | 13.2 | 13.0 |
| Processed cheese | 2.4 | 2.4 | 2.1 | 2.1 |
| Hard, soft and blue cheeses | 10.5 | 10.9 | 11.0 | 10.9 |
| Curd and cottage cheese (kg) | 3.4 | 3.4 | 3.4 | 3.4 |
| Eggs (pieces) | 270 | 238 | 242 | 254 |
| Pasta (kg) | 6.1 | 6.6 | 7.1 | 6.7 |
| Bread (kg) | 44.1 | 43.4 | 40.9 | 42.4 |
| Regular bread and pastry of wheat (kg) | 44.6 | 53.4 | 51.5 | 57.2 |
| Rice (kg) | 4.9 | 4.2 | 4.5 | 5.3 |
| Sugar (kg) | 32.5 | 36.7 | 36.0 | 38.6 |
| Wheat flour (kg) | 90.2 | 96.7 | 93.6 | 101.7 |
| Rye flour (kg) | 8.5 | 10.4 | 8.5 | 9.1 |
| Potatoes (kg) | 71.4 | 64.9 | 67.3 | 70.0 |
| Pulses (kg) | 2.4 | 2.4 | 2.5 | 2.3 |
| Fruit, in terms of fresh (kg) | 89.1 | 90.4 | 84.0 | 79.4 |
| Apples | 26.5 | 26.7 | 22.5 | 20.0 |
| Pears | 2.7 | 3.4 | 2.6 | 3.0 |
| Plums | 4.4 | 5.2 | 4.0 | 4.6 |
| Grapes | 4.8 | 4.0 | 3.5 | 4.1 |
| Subtropical and tropical fruits | 35.0 | 35.0 | 37.3 | 32.8 |
| Vegetables, in terms of fresh (kg) | 82.8 | 81.2 | 79.7 | 85.4 |
| Tomatoes | 12.2 | 11.0 | 10.4 | 12.1 |
| Green peppers | 4.9 | 6.1 | 5.5 | 5.5 |
| Onions | 11.9 | 10.4 | 9.9 | 11.2 |
| Lettuces | 2.3 | 2.6 | 2.1 | 1.7 |
| Coffee roasted (kg) | 2.2 | 2.2 | 2.0 | 2.3 |
| Tea (kg) | 0.4 | 0.3 | 0.2 | 0.2 |
| Non-alcoholic beverages (l) | 297.0 | 296.0 | 293.0 | 287.0 |
| Mineral water | 68.0 | 67.0 | 66.0 | 65.0 |
| Alcoholic beverages ⁴⁾ (l) | 10.4 | 10.4 | 9.8 | 9.8 |
| Spirits – 40% (l) | 8.1 | 8.2 | 7.0 | 6.9 |
| Beer (l) | 156.6 | 150.7 | 144.4 | 142.5 |
| Wine (l) | 18.5 | 18.7 | 19.4 | 19.4 |
| Cigarettes (pieces) | 2 107 | 2 071 | 2 028 | 1 988 |

¹⁾ In terms of the carcass weight, incl. offal.

²⁾ In terms of net fat.

³⁾ In terms of milk, excl. butter.

⁴⁾ In terms of pure (100%) alcohol.

EMPLOYMENT AND WAGES

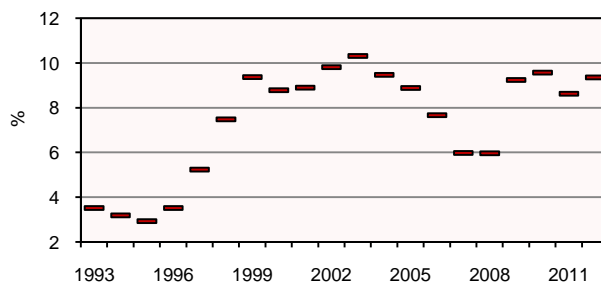
| | 2009 | 2010 | 2011 | 2012 |
|--|---------|---------|---------|---------|
| The employed in the national economy ¹⁾ (thous. persons) | 4 934.3 | 4 885.2 | 4 872.4 | 4 890.1 |
| Agriculture | 153.8 | 151.2 | 145.6 | 149.2 |
| Industry | 1 406.4 | 1 390.8 | 1 442.3 | 1 439.3 |
| Construction | 496.7 | 464.9 | 431.0 | 425.0 |
| Trade | 630.9 | 593.8 | 597.4 | 601.9 |
| Financial and insurance activities | 110.4 | 115.3 | 122.5 | 136.7 |
| Education | 295.6 | 295.6 | 295.5 | 318.9 |
| Health | 326.3 | 339.9 | 324.8 | 333.4 |
| The unemployed, total ¹⁾ (thous. persons) | 352.2 | 383.7 | 350.6 | 366.9 |
| By educational attainment: | | | | |
| Basic education | 82.9 | 79.5 | 70.4 | 83.4 |
| Secondary education without A-level examination | 155.4 | 174.0 | 155.9 | 157.3 |
| Secondary education with A-level examination | 92.8 | 104.5 | 96.3 | 96.0 |
| Higher education | 20.9 | 25.6 | 27.6 | 30.2 |
| By age group: | | | | |
| up to 19 | 17.0 | 16.1 | 15.5 | 16.2 |
| 20–29 | 104.3 | 113.9 | 96.8 | 107.2 |
| 30–39 | 87.9 | 88.9 | 86.2 | 90.2 |
| 40–49 | 64.7 | 74.4 | 70.1 | 69.9 |
| 50–59 | 70.0 | 81.4 | 73.9 | 73.0 |
| 60+ | 7.9 | 8.8 | 8.1 | 10.4 |
| General unemployment rate ¹⁾ (%) | 6.7 | 7.3 | 6.7 | 7.0 |
| Job vacancies ²⁾ (thous.) | 30.9 | 30.8 | 35.8 | 34.9 |
| For persons with disabilities | 1.8 | 1.9 | 2.6 | 2.5 |
| Average monthly gross wages of employees in the national economy ³⁾ (CZK) | 23 425 | 23 903 | 24 466 | 25 112 |
| Agriculture | 17 766 | 18 092 | 18 622 | 20 010 |
| Industry | 22 740 | 23 649 | 24 412 | 25 159 |
| Construction | 22 318 | 22 379 | 22 828 | 22 862 |
| Trade | 21 526 | 22 076 | 22 946 | 23 389 |
| Financial and insurance activities | 45 861 | 45 638 | 47 378 | 51 351 |
| Education | 23 508 | 23 349 | 23 505 | 24 389 |
| Health | 22 921 | 23 557 | 24 829 | 25 103 |

¹⁾ Data are weighted according to data of the demographic statistics, which reflect the 2011 Population and Housing Census results; Labour Force Sample Survey.

²⁾ Source: Ministry of Labour and Social Affairs of the CR; as at 31 December.

³⁾ FTE; preliminary data from the quarterly survey for 2012.

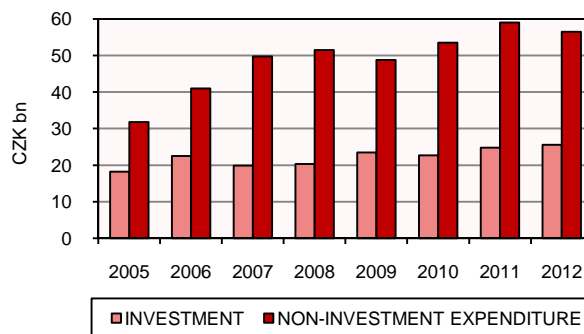
REGISTERED UNEMPLOYMENT RATE (as at 31 Dec)



ENVIRONMENT

| | 2009 | 2010 | 2011 | 2012 |
|--|---------|---------|---------|---------|
| Protected areas (thous. ha) | 1 248.9 | 1 249.0 | 1 248.6 | 1 251.2 |
| National parks | 119.5 | 119.5 | 119.5 | 119.5 |
| Protected landscape areas | 1 086.7 | 1 086.7 | 1 086.7 | 1 086.7 |
| National nature reserves | 28.6 | 29.0 | 27.5 | 28.2 |
| National nature monuments | 3.9 | 3.9 | 4.4 | 4.5 |
| Nature reserves | 38.2 | 38.3 | 38.7 | 39.1 |
| Nature monuments | 20.3 | 22.6 | 23.5 | 25.1 |
| Specific emissions of main air pollutants (REZZO 1–3; t/km ²) | | | | |
| Particulate matter | 0.4 | 0.4 | 0.4 | . |
| Sulphur dioxide (SO ₂) | 2.2 | 2.2 | 2.2 | . |
| Nitrogen oxides (NO _x) | 1.7 | 1.7 | 1.5 | . |
| Carbon monoxide (CO) | 2.6 | 3.0 | 2.9 | . |
| Volatile organic compounds (VOC) | 1.5 | 1.5 | 1.3 | . |
| Total ozone amounts in the atmosphere (DU on the BP scale) | | | | |
| Annual average | 330 | 349 | 318 | 323 |
| Minimum amount | 247 | 259 | 232 | 247 |
| Maximum amount | 440 | 484 | 461 | 449 |
| Waste generated by enterprises (thous. t) | 20 514 | 20 423 | 19 919 | 19 939 |
| Hazardous | 1 495 | 1 358 | 1 490 | 1 474 |
| Accidents on water sources | 111 | 139 | 181 | 196 |
| Wastewater discharged into (mil. m ³) | | | | |
| Watercourses | 1 994 | 2 142 | 1 975 | 1 885 |
| Public sewerage systems | 496 | 490 | 488 | 473 |
| Environmental expenditure from central government budgets (CZK bn, current prices) | 23.9 | 26.5 | 34.3 | 34.5 |
| State funds | 2.1 | 4.4 | 10.9 | 11.2 |
| State budget | 16.5 | 18.5 | 20.0 | 19.9 |

ENVIRONMENTAL PROTECTION



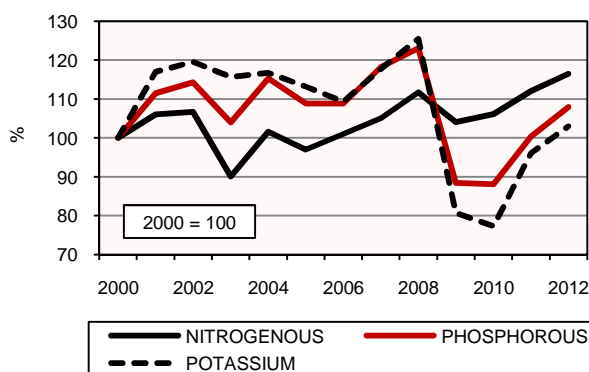
AGRICULTURE

| | 2009 | 2010 | 2011 | 2012 |
|--|--------|---------|---------|---------|
| Output of agricultural industry (CZK mil., current prices) | 97 816 | 102 606 | 118 879 | 122 374 |
| Crop output | 51 115 | 56 951 | 70 252 | 71 806 |
| Animal output | 42 402 | 40 890 | 43 417 | 45 017 |
| Utilised agricultural area (thous. ha) | 3 546 | 3 524 | 3 504 | 3 526 |
| Arable land | 2 574 | 2 540 | 2 516 | 2 513 |
| Set-aside arable land | 29 | 45 | 28 | 33 |
| Areas under crops, total (thous. ha) | 2 545 | 2 496 | 2 488 | 2 481 |
| Cereals, total | 1 528 | 1 460 | 1 468 | 1 445 |
| Arable fodder crops | 397 | 406 | 423 | 436 |
| Per hectare yields (tonnes) | | | | |
| Cereals, total | 5.08 | 4.70 | 5.60 | 4.53 |
| Wheat | 5.24 | 4.99 | 5.69 | 4.32 |
| Potatoes, total | 26.19 | 24.56 | 30.45 | 27.98 |
| Industrial sugar beet | 57.91 | 54.36 | 66.84 | 63.26 |
| Rape | 3.18 | 2.83 | 2.80 | 2.76 |
| Harvest (thous. tonnes) | | | | |
| Cereals, total | 7 832 | 6 878 | 8 285 | 6 595 |
| Wheat | 4 358 | 4 162 | 4 913 | 3 519 |
| Potatoes, total | 753 | 665 | 805 | 662 |
| Industrial sugar beet | 3 038 | 3 065 | 3 899 | 3 869 |
| Rape | 1 128 | 1 042 | 1 046 | 1 109 |
| Per hectare of agricultural land: | | | | |
| Harvest: Grain crops (kg) | 2 226 | 1 968 | 2 383 | 1 882 |
| Potatoes (kg) | 212 | 189 | 230 | 188 |
| Sugar beet (kg) | 857 | 870 | 1 113 | 1 097 |
| Production: Livestock for slaughter ¹⁾ (kg of live weight) | 150 | 147 | 143 | 131 |
| Milk (l) | 764 | 741 | 760 | 777 |
| Eggs ²⁾ (pieces) | 470 | 351 | 363 | 326 |

¹⁾ Cattle and pigs.

²⁾ Eggs for human consumption since 2010.

CONSUMPTION OF MINERAL FERTILISERS



AGRICULTURE AND FORESTRY

| | 2009 | 2010 | 2011 | 2012 |
|--|---------|---------|---------|---------|
| Livestock ¹⁾ (thous. heads) | | | | |
| Cattle | 1 349 | 1 344 | 1 354 | 1 353 |
| Cows | 551 | 552 | 551 | 552 |
| Pigs | 1 909 | 1 749 | 1 579 | 1 587 |
| Sheep | 197 | 209 | 221 | 221 |
| Horses | 30 | 31 | 33 | 34 |
| Poultry | 24 838 | 21 250 | 20 691 | 23 265 |
| Production of livestock for slaughter ²⁾ (thous. tonnes of live weight) | | | | |
| Cattle | 181 | 171 | 170 | 171 |
| Pigs | 370 | 366 | 336 | 296 |
| Poultry | 306 | 251 | 220 | 243 |
| Milk production ²⁾ (mil. l) | 2 708 | 2 612 | 2 664 | 2 741 |
| Production of eggs ^{2,3)} (mil. pieces) | 2 584 | 2 125 | 2 168 | 2 001 |
| Average annual milk yield per cow (l) | 6 869.9 | 6 903.8 | 7 127.8 | 7 432.6 |
| Average annual egg yield per laying hen ⁴⁾ (pieces) | 290.3 | 309.3 | 307.1 | 307.9 |
| Consumption of mineral fertilisers ⁵⁾ (tonnes of net nutrients) | | | | |
| Nitrogenous | 278 198 | 281 484 | 303 927 | 318 225 |
| Phosphorous | 221 667 | 225 982 | 238 554 | 248 024 |
| Potassium | 35 218 | 35 078 | 39 991 | 43 001 |
| Potassium | 21 313 | 20 424 | 25 382 | 27 199 |
| Afforestation/reforestation (ha) | 20 900 | 21 859 | 21 755 | 19 903 |
| Coniferous | 12 795 | 12 967 | 13 363 | 12 290 |
| Non-coniferous | 8 105 | 8 892 | 8 392 | 7 613 |
| Roundwood removals, total (thous. m ³ under bark) | | | | |
| Coniferous | 15 502 | 16 736 | 15 381 | 15 061 |
| Non-coniferous | 14 047 | 15 066 | 13 340 | 13 056 |
| Non-coniferous | 1 455 | 1 670 | 2 041 | 2 005 |
| Salvage felling | 6 628 | 6 459 | 3 820 | 3 237 |

¹⁾ As at 1 April of the following year.

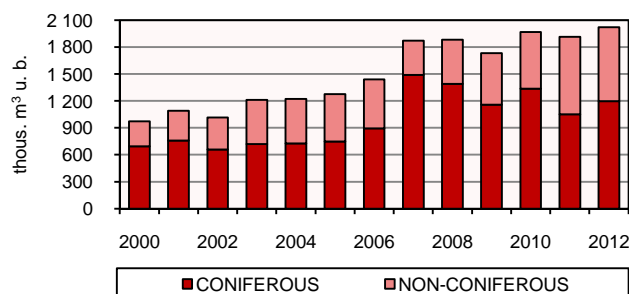
²⁾ The agricultural sector and households.

³⁾ Eggs for human consumption since 2010.

⁴⁾ The average annual egg yield per laying hen since 2010.

⁵⁾ Crop year.

FUEL WOOD DELIVERIES



INDUSTRY

| CZ-NACE section, division | Industrial production index (previous year = 100) | | | |
|---|--|-------|-------|-------|
| | 2009 | 2010 | 2011 | 2012 |
| Industry, total (B+C+D) ¹⁾ | 86.4 | 108.6 | 105.9 | 99.2 |
| Mining and quarrying | 99.0 | 99.3 | 101.1 | 95.7 |
| Manufacturing | 84.7 | 110.0 | 107.5 | 99.3 |
| Manufacture of food products | 102.4 | 100.3 | 96.7 | 98.9 |
| Manufacture of beverages | 79.4 | 89.9 | 102.7 | 95.8 |
| Manufacture of textiles | 87.1 | 103.2 | 103.2 | 98.4 |
| Manufacture of wearing apparel | 87.8 | 94.7 | 96.7 | 94.0 |
| Manufacture of leather and related products | 74.1 | 109.4 | 109.7 | 93.2 |
| Manufacture of wood and of products of wood and cork, except furniture; manufacture of articles of straw and plaiting materials | 96.6 | 101.1 | 97.5 | 91.8 |
| Manufacture of paper and paper products | 92.5 | 105.0 | 101.1 | 99.0 |
| Printing and reproduction of recorded media | 82.9 | 101.5 | 106.0 | 96.8 |
| Manufacture of coke and refined petroleum products | 89.7 | 105.0 | 92.8 | 101.4 |
| Manufacture of chemicals and chemical products | 87.2 | 106.0 | 95.4 | 104.8 |
| Manufacture of basic pharmaceutical products and pharmaceutical preparations | 89.6 | 113.7 | 99.3 | 94.7 |
| Manufacture of rubber and plastic products | 89.0 | 105.3 | 106.9 | 97.8 |
| Manufacture of other non-metallic mineral products | 78.9 | 98.3 | 102.0 | 95.6 |
| Manufacture of basic metals | 72.5 | 121.8 | 105.8 | 91.9 |
| Manufacture of fabricated metal products, except machinery and equipment | 75.4 | 116.5 | 105.6 | 99.3 |
| Manufacture of computer, electronic and optical products | 83.3 | 129.2 | 97.3 | 81.1 |
| Manufacture of electrical equipment | 84.0 | 118.4 | 110.7 | 110.1 |
| Manufacture of machinery and equipment n.e.c. | 71.7 | 115.0 | 110.8 | 101.9 |
| Manufacture of motor vehicles, trailers and semi-trailers | 89.1 | 122.7 | 121.2 | 101.1 |
| Manufacture of other transport equipment | 97.6 | 110.9 | 121.6 | 99.3 |
| Manufacture of furniture | 85.5 | 93.1 | 101.7 | 96.3 |
| Other manufacturing | 80.6 | 105.0 | 104.2 | 101.6 |
| Electricity, gas, steam and air conditioning supply ¹⁾ | 96.1 | 104.6 | 98.5 | 99.5 |

¹⁾ Without 35.3 Steam and air conditioning supply.

INDUSTRY AND ENERGY

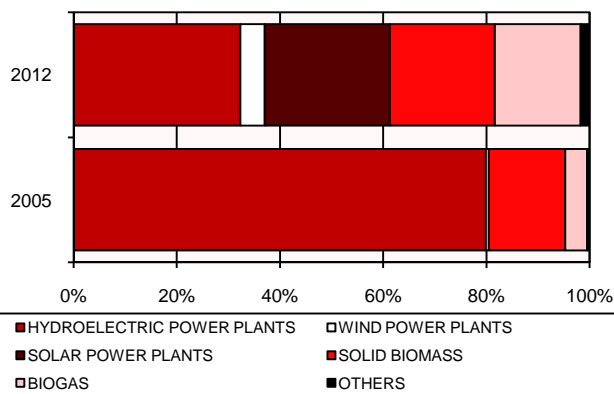
| | 2012 ¹⁾ | |
|---|--------------------|--------------------------------------|
| | Industry, total | Enterprises with 50+ employees |
| Average number of enterprises | 179 820 | 4 215 |
| Employed persons (thous. persons – headcount) | 1 337 | . |
| Employees | 1 176 | 921 |
| Wages of employees ²⁾ (CZK mil.) | 351 909 | 294 069 |
| Industrial production index (2011 = 100) | 99.2 | . |
| Sales (CZK mil., current prices) | | |
| Own goods and services | 4 590 777 | 3 985 796 |
| Goods for resale | 541 720 | 365 809 |
| Outputs, incl. trade margin (CZK mil., current prices) | 4 698 997 | 4 078 477 |
| Production consumption (CZK mil., current prices) | 3 676 453 | 3 243 074 |
| Value added (CZK mil., current prices) | 1 022 544 | 835 403 |
| Share of value added in outputs (CZK mil., current prices) | 21.8 | 20.5 |
| Acquisition of intangible and tangible fixed assets ³⁾ (CZK mil., current prices) | 250 313 | 203 574 |

¹⁾ Preliminary data.

²⁾ Excl. other personnel expenses.

³⁾ Excl. transfer of fixed assets due to organizational changes and other free acquisitions.

PRODUCTION OF ELECTRICITY FROM RENEWABLE SOURCES AND WASTE

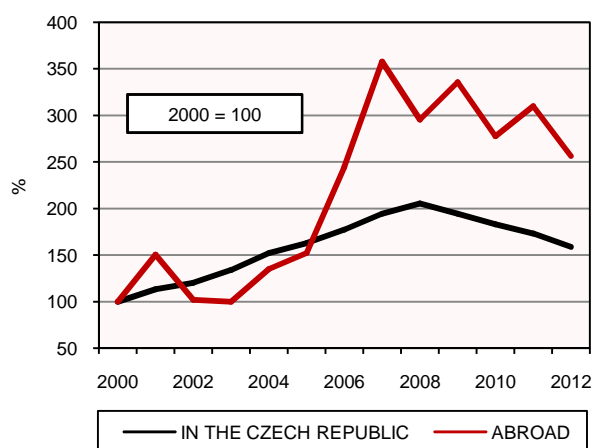


| | 2009 | 2010 | 2011 | 2012 |
|--|--------|--------|--------|--------|
| Electricity production (GWh) | 82 250 | 85 910 | 87 561 | 87 573 |
| Exports (measured) | 22 230 | 21 590 | 27 501 | 28 707 |
| Imports (measured) | 8 586 | 6 642 | 10 457 | 11 587 |
| Domestic consumption | 57 859 | 60 050 | 59 579 | 59 781 |
| Mining for sale (thous. t) | | | | |
| Coking coal / other bituminous coal | 11 001 | 11 435 | 11 265 | 11 440 |
| Lignite / brown coal | 45 154 | 43 774 | 46 639 | 43 533 |
| Manufacture of brown coal briquettes (thous. t) | 170 | 145 | - | - |
| Manufacture of coke and semi-coke (thous. t) | 2 295 | 2 548 | 2 586 | 2 467 |

CONSTRUCTION

| | 2009 | 2010 | 2011 | 2012 |
|---|--------|--------|--------|--------|
| Construction production index | | | | |
| Year-on-year index | 99.1 | 92.6 | 96.4 | 92.4 |
| Fixed base index (2010 = 100) | 108.0 | 100.0 | 96.4 | 89.1 |
| Construction work "S" (according to delivery contracts), total (CZK bn, current prices) | 520.9 | 488.7 | 464.0 | 424.0 |
| In the Czech Republic | 507.7 | 477.8 | 451.9 | 413.9 |
| New construction, reconstruction and upgrade | 375.9 | 356.3 | 332.2 | 304.8 |
| Repair and maintenance | 131.8 | 121.5 | 119.6 | 109.1 |
| Abroad | 13.2 | 10.9 | 12.2 | 10.1 |
| Average number of employees of construction enterprises (thous. persons) | 263 | 258 | 242 | 234 |
| Dwellings completed | 38 473 | 36 442 | 28 630 | 29 467 |
| In family houses | 19 124 | 19 760 | 17 385 | 17 442 |
| In multi-dwelling buildings | 13 766 | 10 912 | 6 487 | 7 095 |
| In all types of extensions | 3 225 | 2 868 | 2 823 | 2 626 |
| In non-residential buildings | 803 | 786 | 618 | 581 |
| Average living floor area per new completed dwelling (m ²) | 74.2 | 76.8 | 78.2 | 76.3 |
| In family houses | 94.4 | 95.2 | 94.1 | 93.8 |
| In multi-dwelling buildings | 52.1 | 55.0 | 51.3 | 49.6 |

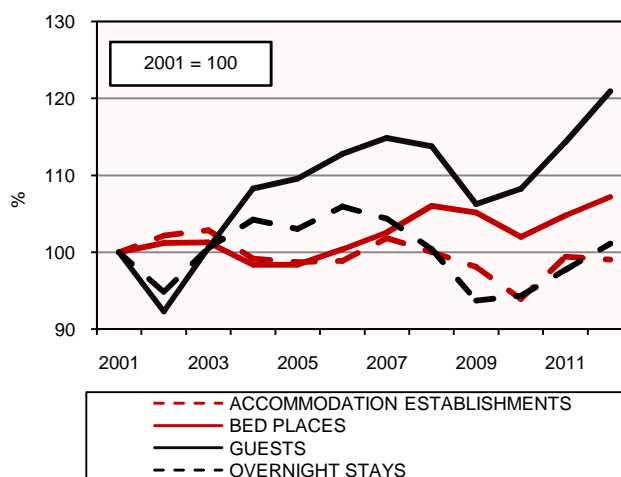
CONSTRUCTION WORK "S"



TOURISM

| | 2009 | 2010 | 2011 | 2012 |
|---|---------|---------|---------|---------|
| Enterprises in accommodation and food service activities (CZ-NACE divisions 55, 56) | 60 349 | 60 904 | 60 465 | . |
| With 250+ employees | 18 | 19 | 21 | . |
| Collective accommodation establishments | 7 557 | 7 235 | 7 657 | 7 631 |
| Hotels***** | 46 | 47 | 50 | 56 |
| Hotels**** | 425 | 442 | 467 | 490 |
| Other hotels and boarding houses | 3 998 | 3 811 | 4 095 | 4 126 |
| Tourist camp-sites | 485 | 480 | 487 | 487 |
| Holiday dwellings and hostels | 892 | 843 | 918 | 889 |
| Bed places in collective accommodation establishments (permanent, excl. extra beds) | 463 087 | 449 068 | 461 434 | 472 015 |
| Hotels***** | 12 232 | 12 353 | 12 478 | 12 431 |
| Hotels**** | 58 468 | 60 462 | 62 539 | 65 576 |
| Other hotels and boarding houses | 190 036 | 183 067 | 186 841 | 193 420 |
| Tourist camp-sites | 28 282 | 29 020 | 29 557 | 30 004 |
| Holiday dwellings and hostels | 53 524 | 50 672 | 54 925 | 54 357 |
| Places for tents and caravans | 50 605 | 49 844 | 49 106 | 48 350 |
| In tourist camp-sites | 47 786 | 47 117 | 45 867 | 45 455 |
| Guests in collective accommodation establishments (thous. persons) | 11 986 | 12 212 | 12 899 | 13 647 |
| Hotels***** | 758 | 887 | 967 | 1 050 |
| Hotels**** | 3 116 | 3 583 | 3 993 | 4 279 |
| Non-residents | 6 032 | 6 334 | 6 715 | 7 165 |
| Number of overnight stays (thous.) | 36 662 | 36 909 | 38 235 | 39 568 |
| Non-residents | 17 747 | 18 366 | 19 425 | 20 522 |

COLLECTIVE ACCOMMODATION ESTABLISHMENTS

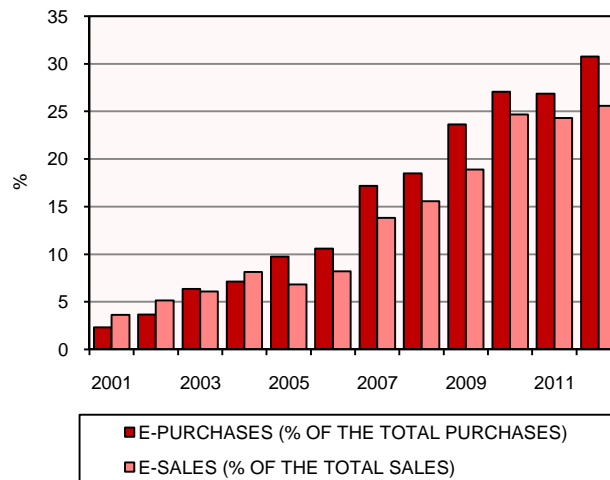


INFORMATION SOCIETY

| Survey period: January of a given year | 2010 | 2011 | 2012 | 2013 |
|--|------|------|------|------|
| Enterprises ¹⁾ with (%): | | | | |
| Broadband Internet connection | 85.5 | 88.6 | 92.0 | 95.2 |
| Speed 2 Mb/s and higher | 81.3 | 83.4 | 86.8 | 90.3 |
| Using ADSL | 53.8 | 55.2 | 59.5 | 66.2 |
| Webpages | 74.1 | 77.8 | 79.8 | 80.1 |
| Employees using the Internet (%) | 33.3 | 34.9 | 35.5 | 36.6 |

¹⁾ Share in the total number of enterprises with 10+ employees.

E-COMMERCE OF ENTERPRISES



| Survey period: 2nd quarter of a given year | 2010 | 2011 | 2012 | 2013 |
|--|------|------|------|------|
| Households having (%) | | | | |
| PC | 59.3 | 64.8 | 67.3 | 68.1 |
| Internet connection | 56.0 | 61.7 | 65.4 | 67.0 |
| Persons (aged 16+) using the Internet (%) | 61.8 | 65.5 | 69.5 | 70.4 |
| 16–24 | 92.3 | 94.8 | 96.2 | 96.9 |
| 25–34 | 83.1 | 87.4 | 92.9 | 91.8 |
| 35–44 | 79.7 | 84.1 | 89.0 | 91.2 |
| 45–54 | 65.8 | 72.0 | 79.4 | 81.2 |
| 55–64 | 42.1 | 46.3 | 56.0 | 58.0 |
| 65+ | 13.2 | 16.3 | 16.8 | 19.0 |
| Selected activities carried out by individuals (16+) on the Internet (%) | | | | |
| Sending/receiving e-mails | 55.3 | . | 63.7 | 64.5 |
| Social networking | 9.3 | 24.6 | 30.3 | 33.5 |
| Searching information on | | | | |
| Goods and services | 49.8 | 51.6 | 57.0 | 58.7 |
| Travel and accommodation | 24.9 | 35.0 | 39.8 | 40.3 |
| Health | 19.2 | 29.0 | 35.5 | 37.6 |
| Reading online news, newspapers and magazines | 41.1 | 49.5 | 57.6 | 58.7 |
| Internet banking | 21.0 | 27.4 | 31.6 | 38.4 |
| Internet shopping | 22.0 | 25.4 | 30.7 | 33.6 |

COMMUNICATION TECHNOLOGIES

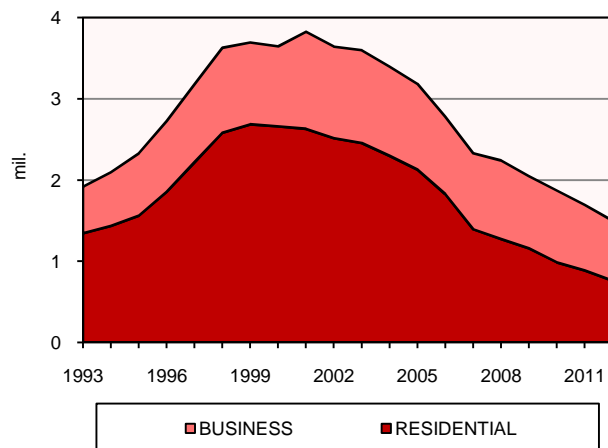
| | 2009 | 2010 | 2011 | 2012 |
|--|--------|--------|--------|--------|
| Fixed telephone lines ¹⁾ , total (thous.) | 2 070 | 1 889 | 1 683 | 1 514 |
| Residential | 1 161 | 989 | 888 | 764 |
| Business | 889 | 882 | 778 | 735 |
| Public payphones | 20 | 18 | 17 | 15 |
| VoIP lines ²⁾ , total (thous.) | 387 | 462 | 579 | 617 |
| Residential | 277 | 300 | 319 | 354 |
| Business | 110 | 162 | 260 | 263 |
| Mobile network subscribers (active SIM cards), total (thous.) | 13 139 | 12 992 | 13 521 | 13 506 |
| Pre-paid cards only | 5 993 | 5 454 | 5 408 | 5 358 |
| National outgoing telephone traffic, total (mil. minutes) | 16 302 | 16 912 | 17 237 | 17 648 |
| From public fixed network ¹⁾ | 2 793 | 2 274 | 2 028 | 1 786 |
| From mobile network | 13 509 | 14 638 | 15 209 | 15 862 |
| Short messages (SMS) sent (mil.) | 7 637 | 8 185 | 7 265 | 7 534 |
| Cable TV outlets, total (thous.) | 1 514 | 1 552 | 1 532 | 1 631 |
| Broadband Internet subscriptions, total ³⁾ (thous.) | 2 376 | 2 783 | 3 086 | 3 399 |
| By means of: | | | | |
| xDSL lines | 778 | 859 | 918 | 951 |
| Cable TV modem | 442 | 481 | 515 | 523 |
| Mobile networks | 371 | 542 | 578 | 647 |
| Fixed wireless access (FWA, WiFi) | 680 | 720 | 839 | 985 |
| Optical fibre | 105 | 180 | 236 | 293 |
| Registered domains in the CR (thous.) | 633 | 749 | 881 | 1 010 |

¹⁾ Includes telephone services provided merely in the public switched telephone network.

²⁾ VoIP enables voice transmission over data networks.

³⁾ Excludes occasional Internet access by means of mobile networks and SIM cards.

FIXED TELEPHONE LINES



SCIENCE AND RESEARCH

| | 2009 | 2010 ¹⁾ | 2011 ¹⁾ | 2012 |
|---|-------|--------------------|--------------------|-------|
| Human resources in science and technology, total (thous. persons) | 2 243 | 2 250 | 2 179 | 2 227 |
| Persons with tertiary education | 1 147 | 1 236 | 1 337 | 1 412 |
| Persons employed in S&T occupations | 1 759 | 1 727 | 1 569 | 1 573 |
| Scientists and engineers, total (thous. persons) | 206 | 184 | 233 | 257 |
| Age groups: | | | | |
| Under 25 years | 6.0 | 3.0 | 7.0 | 8.2 |
| 26–34 years | 71.2 | 66.3 | 75.1 | 79.0 |
| 35–44 years | 48.6 | 43.0 | 60.0 | 67.6 |
| 45–54 years | 43.7 | 34.3 | 48.7 | 55.5 |
| 55+ years | 36.7 | 37.3 | 42.0 | 46.9 |

¹⁾ In 2010 the methodology changed; in 2011 the Classification of Occupations (CZ-ISCO) changed.

R&D EXPENDITURE



| | 2009 | 2010 | 2011 | 2012 |
|---|-------|-------|-------|-------|
| Number of R&D performers, total | 2 155 | 2 392 | 2 514 | 2 578 |
| With R&D as principal activity | 216 | 233 | 231 | 234 |
| R&D expenditure, total ¹⁾ (CZK bn) | 50.9 | 53.0 | 62.8 | 72.4 |
| Source of funds: government | 24.3 | 23.5 | 26.2 | 26.6 |
| R&D personnel as at 31 December (thous. persons, headcount) | 75.8 | 77.9 | 82.3 | 86.9 |
| By occupation: | | | | |
| Researchers | 43.1 | 43.4 | 45.9 | 47.4 |
| Technicians | 23.3 | 23.7 | 25.0 | 26.6 |
| Other personnel | 9.4 | 10.8 | 11.4 | 12.9 |

¹⁾ Data have been revised.

EDUCATION¹⁾

| | 2009 | 2010 | 2011 | 2012 |
|--|---------|---------|---------|---------|
| Schools (number) | | | | |
| Nursery | 4 826 | 4 880 | 4 931 | 5 011 |
| Basic | 4 125 | 4 123 | 4 111 | 4 095 |
| Grammar | 379 | 372 | 371 | 368 |
| Secondary technical and vocational | 1 111 | 1 107 | 1 082 | 1 049 |
| Conservatoires | 17 | 18 | 18 | 18 |
| Higher professional | 184 | 182 | 180 | 178 |
| Universities | 73 | 72 | 72 | 73 |
| Children, pupils, and students at: | | | | |
| Nursery schools | 314 008 | 328 612 | 342 521 | 354 340 |
| Basic schools | 794 459 | 789 486 | 794 642 | 807 950 |
| Grammar schools | 143 851 | 139 066 | 135 588 | 131 013 |
| Secondary technical and vocational schools | 412 409 | 393 852 | 366 255 | 339 741 |
| Conservatoires | 3 435 | 3 560 | 3 557 | 3 655 |
| Higher professional schools | 28 749 | 29 800 | 29 335 | 28 980 |
| Universities, incl. doctoral programmes ¹⁾ | 389 066 | 396 073 | 392 429 | 381 397 |
| Having Czech citizenship | 354 604 | 358 505 | 353 510 | 341 714 |
| Studies: | | | | |
| Full-time | 277 125 | 283 644 | 284 558 | 282 153 |
| Distance and combined | 116 281 | 116 712 | 112 004 | 102 844 |
| Teachers ²⁾ at: | | | | |
| Nursery schools | 24 584 | 25 737 | 26 781 | 27 739 |
| Basic schools | 58 417 | 58 023 | 57 815 | 57 669 |
| Secondary schools | 46 489 | 45 385 | 43 876 | 41 789 |
| Conservatoires | 998 | 1 030 | 1 121 | 1 127 |
| Higher professional schools | 1 806 | 1 841 | 1 891 | 1 876 |
| Public universities | | | | |
| Professors and readers | 5 431 | 5 422 | 5 318 | 5 005 |
| Other teaching staff | 11 332 | 11 082 | 11 002 | 10 444 |
| Expenditure on education (CZK mil.) | | | | |
| State budget ³⁾ | 38 465 | 37 836 | 41 341 | 41 298 |
| Local government budgets ⁴⁾ | 111 630 | 117 590 | 114 723 | 109 488 |

¹⁾ Data for all types and forms of education.

¹⁾ Excludes state universities.

²⁾ Full-time equivalent.

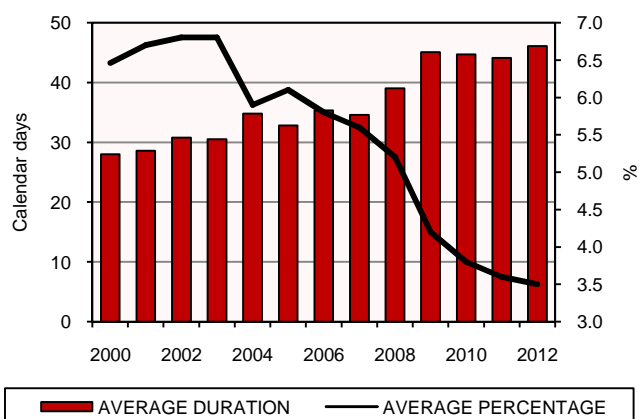
³⁾ Excluding chapters of State Debt, State Financial Assets Transactions, and General Treasury Management; after consolidation among budgets.

⁴⁾ Consolidated, includes expenditure of the Regional Councils of Cohesion Regions.

HEALTH

| | 2009 | 2010 | 2011 | 2012 |
|--|---------|---------|---------|---------|
| Health establishments, total | | | | |
| Beds (places) | 118 189 | 117 414 | 115 622 | 113 233 |
| Physicians | 45 185 | 45 646 | 46 422 | 46 971 |
| State-owned health establishments | | | | |
| Beds (places) | 33 655 | 33 309 | 32 557 | 31 641 |
| Physicians | 9 069 | 8 967 | 9 186 | 9 209 |
| Physicians, excl. dentists (headcount) | 38 818 | 39 272 | 39 798 | 40 320 |
| Dentists (headcount) | 7 210 | 7 411 | 7 579 | 7 622 |
| Population per: | | | | |
| Physician | 271 | 268 | 264 | 261 |
| Dentist | 1 457 | 1 421 | 1 386 | 1 380 |
| Beds in hospitals, total | 62 992 | 62 219 | 60 336 | 58 832 |
| per 1 000 population | 6.0 | 5.9 | 5.7 | 5.6 |
| Internal diseases | 12 465 | 12 149 | 11 573 | 11 338 |
| Surgery | 9 119 | 8 885 | 8 579 | 8 267 |
| Gynaecology and obstetrics | 5 679 | 5 585 | 5 382 | 5 188 |
| Paediatrics | 5 750 | 5 742 | 5 610 | 5 493 |
| Beds in balneological institutions | 26 505 | 26 432 | 26 835 | 26 196 |
| Patients in balneological institutions, total | 378 181 | 375 866 | 360 178 | 360 537 |
| Paying patients-residents | 111 123 | 114 957 | 111 141 | 106 381 |
| Foreigners | 143 922 | 138 810 | 133 630 | 158 884 |
| Pharmacies | 2 592 | 2 629 | 2 670 | 2 736 |
| Average duration of 1 case of incapacity for work (calendar days) | 45.1 | 44.7 | 44.1 | 46.1 |
| Newly notified cases of incapacity for work per 100 sickness-insured persons | 33.9 | 30.7 | 30.1 | 27.4 |
| Average percentage of incapacity for work | 4.18 | 3.80 | 3.64 | 3.45 |

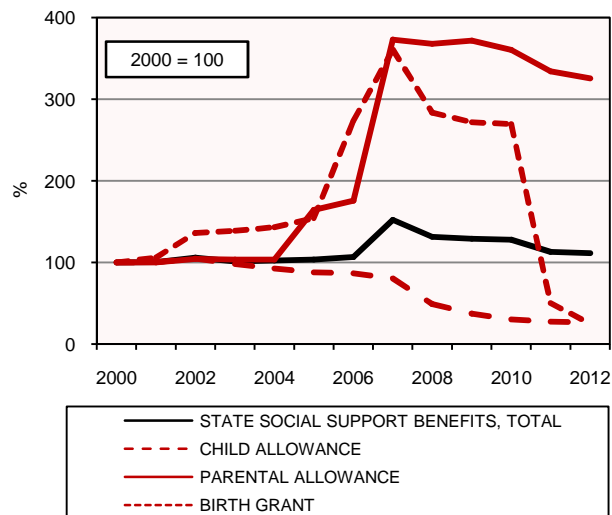
INCAPACITY FOR WORK DUE TO DISEASE OR INJURY



SOCIAL SECURITY

| | 2009 | 2010 | 2011 | 2012 |
|--|---------|---------|---------|---------|
| Average numbers of the sickness insured (thous. persons) | 4 253 | 4 311 | 4 212 | 4 472 |
| Employees | 4 079 | 4 133 | 4 062 | 4 352 |
| Own-account workers (sickness insured) | 174 | 178 | 150 | 120 |
| Sickness insurance benefits paid (CZK mil.) | 26 033 | 22 789 | 21 505 | 19 377 |
| Sickness benefit | 18 215 | 14 944 | 13 354 | 11 465 |
| Carer's allowance | 729 | 431 | 640 | 682 |
| Statutory maternity pay | 7 084 | 7 410 | 7 506 | 7 224 |
| Pregnancy and maternity compensation benefit | 5 | 4 | 6 | 7 |
| Pension insurance benefits paid (CZK mil.) | 331 704 | 340 162 | 359 234 | 367 864 |
| Old-age pensions, incl. proportional | 243 636 | 265 985 | 284 614 | 295 140 |
| Disability pensions | 60 989 | 47 682 | 47 451 | 45 476 |
| Widow's and widower's pensions | 23 825 | 23 281 | 23 868 | 23 906 |
| State social support benefits paid (CZK mil.) | 41 082 | 40 791 | 36 007 | 35 543 |
| Child allowance | 4 736 | 3 862 | 3 497 | 3 342 |
| Parental allowance | 28 586 | 27 722 | 25 706 | 25 032 |

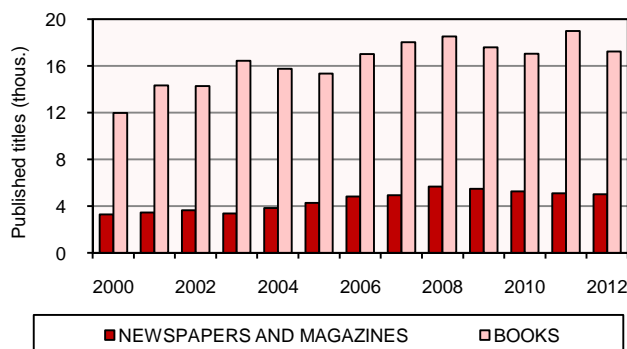
STATE SOCIAL SUPPORT BENEFITS PAID



CULTURE

| | 2009 | 2010 | 2011 | 2012 |
|--|--------|--------|--------|--------|
| State-owned theatres | 43 | 42 | 41 | 39 |
| Permanent theatres in operation | 84 | 83 | 84 | 81 |
| Performances | | | | |
| by Czech companies | 12 993 | 12 792 | 12 629 | 12 507 |
| Plays in repertory | 1 277 | 1 369 | 1 332 | 1 322 |
| First nights | 381 | 428 | 393 | 344 |
| Attendance (thous.) | 3 714 | 3 663 | 3 528 | 3 441 |
| Attendance rate (%) | 81 | 82 | 78 | 80 |
| Other theatres | 94 | 109 | 112 | 114 |
| Permanent theatres in operation | 66 | 77 | 85 | 85 |
| Performances | | | | |
| by Czech companies | 13 928 | 14 091 | 15 333 | 15 019 |
| Plays in repertory | 1 083 | 1 332 | 1 307 | 1 505 |
| First nights | 231 | 257 | 303 | 327 |
| Museums and art galleries | 498 | 499 | 504 | 516 |
| Exhibitions | 3 869 | 3 847 | 3 974 | 4 005 |
| Visitors (thous.) | 9 660 | 9 308 | 10 018 | 9 577 |
| Castles and other historical monuments | 294 | 284 | 295 | 295 |
| Visitors (thous.) | 11 616 | 11 325 | 12 032 | 11 627 |
| Zoological gardens | 15 | 15 | 15 | 15 |
| Visitors (thous.) | 5 505 | 4 935 | 5 591 | 5 297 |
| Libraries | | | | |
| Public libraries | 5 417 | 5 400 | 5 393 | 5 386 |
| Library items (thous.) | 38 830 | 38 848 | 38 753 | 38 751 |
| Loans (thous.) | 51 523 | 51 233 | 51 250 | 50 367 |
| Registered readers (thous.) | 1 038 | 1 063 | 1 084 | 1 069 |
| Regional research libraries | 15 | 15 | 15 | 15 |
| Library items (thous.) | 24 424 | 24 424 | 25 205 | 25 502 |
| Loans (thous.) | 15 338 | 15 540 | 15 969 | 15 890 |
| Registered readers (thous.) | 360 | 368 | 378 | 380 |
| Press (titles) | | | | |
| Books (non-periodicals) | 17 598 | 17 054 | 18 985 | 17 247 |
| Newspapers and magazines (periodicals) | 5 481 | 5 265 | 5 098 | 5 028 |
| Cinemas | 735 | 701 | 658 | 624 |
| Attendance (thous.) | 12 470 | 13 537 | 10 790 | 11 182 |

THE PRESS



ORGANIZATIONAL STRUCTURE OF THE NATIONAL ECONOMY

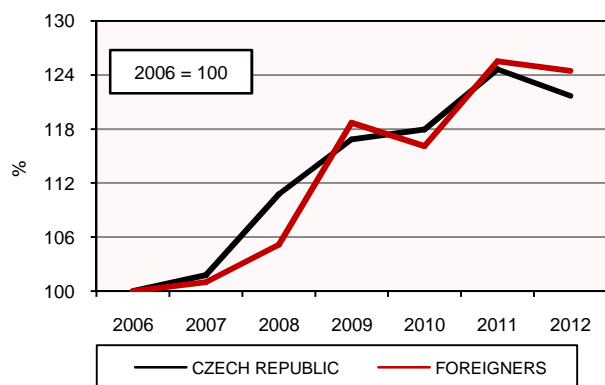
| as at 31 December | 2009 | 2010 | 2011 | 2012 |
|---|-----------|-----------|-----------|-----------|
| Number of businesses, | | | | |
| total | 2 570 611 | 2 637 551 | 2 703 444 | 2 727 654 |
| Legal persons | 634 310 | 667 961 | 695 961 | 721 927 |
| Natural persons | 1 936 301 | 1 969 590 | 2 007 483 | 2 005 727 |
| By legal form: | | | | |
| Private entrepreneurs in business under the Trade Act | 1 806 370 | 1 842 965 | 1 877 035 | 1 868 242 |
| Unincorporated agricultural entrepreneurs | 32 863 | 34 033 | 35 119 | 35 629 |
| Business companies and partnerships | 329 100 | 347 753 | 365 293 | 382 478 |
| Joint-stock companies | 23 312 | 23 991 | 24 667 | 25 057 |
| Cooperatives | 15 636 | 15 690 | 15 536 | 15 362 |
| State-owned enterprises | 420 | 358 | 308 | 289 |
| By sector: | | | | |
| Public enterprises and corporations | 2 006 | 1 897 | 1 926 | 1 884 |
| Private enterprises and corporations | 471 779 | 498 044 | 518 789 | 537 780 |
| Foreign controlled | 192 332 | 199 918 | 190 618 | 195 854 |
| General government | 17 989 | 17 956 | 17 693 | 17 601 |
| Non-profit institutions serving households | 115 409 | 118 591 | 123 385 | 128 062 |
| Households | 1 963 183 | 2 000 805 | 2 041 390 | 2 042 056 |
| By size of business: | | | | |
| Number of employees | | | | |
| 0, incl. businesses, which have not reported their numbers of employees | 2 288 148 | 2 359 471 | 2 423 173 | 2 444 857 |
| 1–5 | 189 588 | 188 060 | 191 731 | 197 403 |
| 6–19 | 59 378 | 57 328 | 55 957 | 54 383 |
| 20–249 | 31 434 | 30 529 | 30 359 | 28 872 |
| 250+ | 2 063 | 2 163 | 2 224 | 2 139 |
| Enterprise-type statistical units | 1 346 185 | 1 399 983 | 1 461 201 | 1 513 556 |
| Selected legal forms: | | | | |
| State-owned enterprises | 237 | 226 | 194 | 196 |
| Joint-stock companies | 17 057 | 19 407 | 19 562 | 20 903 |
| Private entrepreneurs in business under the Trade Act | 917 919 | 920 670 | 951 042 | 957 079 |

JUSTICE, CRIME, ACCIDENTS

| | 2009 | 2010 | 2011 | 2012 |
|---|---------|---------|---------|---------|
| Persons prosecuted ¹⁾ (incl. cases settled in shortened preparatory procedure) | 147 569 | 124 418 | 102 955 | 103 179 |
| Persons accused | 135 567 | 114 969 | 94 619 | 95 189 |
| Persons convicted, total ¹⁾ | 73 787 | 70 651 | 70 160 | 71 471 |
| Females | 9 218 | 9 186 | 9 202 | 9 425 |
| Juveniles | 2 718 | 2 389 | 2 203 | 2 186 |
| Sentenced to | | | | |
| Imprisonment | 10 687 | 11 818 | 11 733 | 11 602 |
| Probation order | 41 686 | 44 403 | 45 783 | 45 675 |

¹⁾ Source: Ministry of Justice of the CR.

PRISONERS BY CITIZENSHIP



| | 2009 | 2010 | 2011 | 2012 |
|--|--------|--------|--------|--------|
| Road accidents, total ¹⁾ | 74 815 | 75 522 | 75 137 | 81 404 |
| Involving death or injury | 21 706 | 19 676 | 20 487 | 20 504 |
| Persons: Killed (death within 30 days of the accident) | 901 | 802 | 773 | 742 |
| Seriously injured | 3 536 | 2 823 | 3 092 | 2 986 |
| Slightly injured | 23 777 | 21 610 | 22 519 | 22 590 |
| Property damage (CZK mil.) | 4 981 | 4 925 | 4 628 | 4 875 |
| Fires, total (number) ²⁾ | 20 177 | 17 937 | 21 125 | 20 492 |
| In: Agriculture | 562 | 578 | 642 | 575 |
| Forestry | 556 | 282 | 309 | 374 |
| Industry | 695 | 724 | 754 | 744 |
| Construction | 78 | 76 | 80 | 81 |
| Trade | 188 | 174 | 161 | 158 |
| Transport, communications | 2 325 | 2 039 | 2 003 | 1 752 |
| Households, residential houses | 2 471 | 2 507 | 2 668 | 2 684 |
| Persons: Killed | 117 | 131 | 129 | 125 |
| Injured | 980 | 1 060 | 1 152 | 1 286 |
| Rescued | 5 203 | 3 335 | 7 408 | 5 195 |
| Direct damage (CZK mil.) | 2 169 | 1 956 | 2 242 | 2 862 |
| Salvaged values (CZK mil.) | 9 075 | 11 116 | 8 079 | 10 638 |

¹⁾ Source: Police Presidium of the CR, Traffic Police Directorate.

²⁾ Source: Ministry of the Interior – General Directorate of the Fire and Rescue Service of the CR.

SELECTED CZSO PUBLICATIONS

Statistical Yearbook of the Czech Republic 2013

Data on the state and development of the most important areas of economic, social, and cultural life in the CR; long-term time series (2000–2012) of selected national economy indicators. Czech-English version. Brought out on CD-ROM, too.

Information economy in figures 2012

Basic overview of the state and development of the following areas: ICT specialists, expenditure, and investment, research and development and ICT patents, ICT external trade, ICT sector. English version. Free.

Indicators of Social and Economic Development of the Czech Republic

Time series (2000–2012) and quarterly (monthly) data on selected national economy indicators since 2010. Czech-English version.

External Trade of the Czech Republic 2012

Final data on external trade of the CR in total, by group of countries and commodity structure. Czech-English version.

Statistika: Statistics and Economy Journal

Peer reviewed scientific quarterly journal of the Czech Statistical Office published since 1964. English version only.

Foreigners in the Czech Republic 2013

Time series of statistical data from many areas relating to foreigners in the CR, incl. data for 2012. Czech-English version. Printed form is free.

Demographic Yearbook of the Czech Republic 2012

Source publication with detailed information on natural increase and migration of the population incl. causes of death according to the ICD-10. Published without interruption since 1919. Czech-English version.

First Hand Figures 2012 Prague

Promotion booklet containing the first available data for Prague, its administrative districts and city sections for 2012. English version. Free.

Czech Republic in International Comparison 2013

International comparison of the Czech Republic with other countries, especially with the European Union member states. A wide range of data from many statistical domains. Czech-English version.

Food Consumption 2012

Total food consumption per capita in the period 2004–2012. Czech-English version.

If you are interested in the above-mentioned or other publications, contact us at:

Czech Statistical Office

Information Services Unit

Headquarters

Na padesátém 81

100 82 Praha 10

phone: (+420) 274 052 304

e-mail: infoservis@czso.cz

WWW.CZSO.CZ