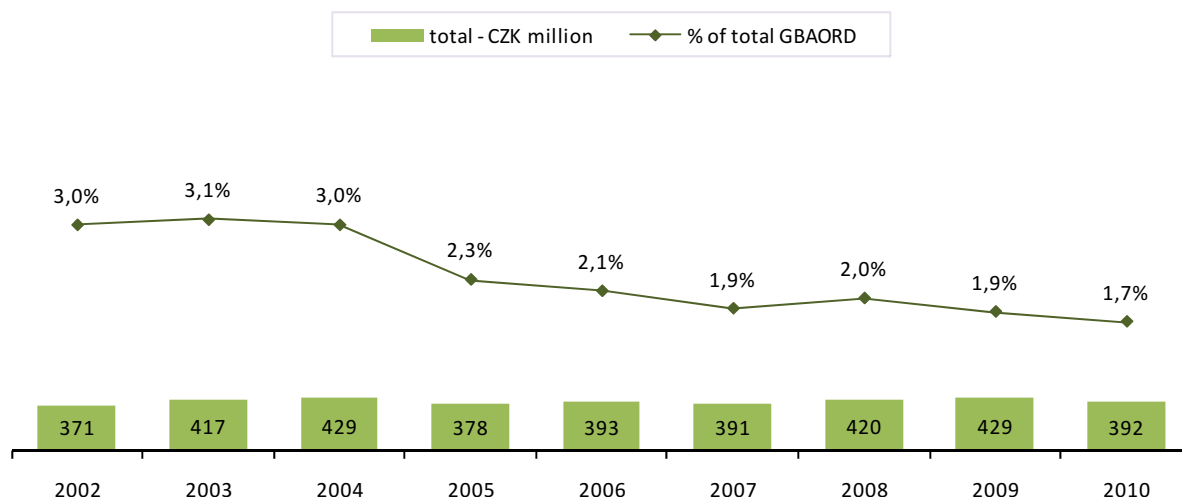


2.1 Exploration and exploitation of the Earth (SEO 01)

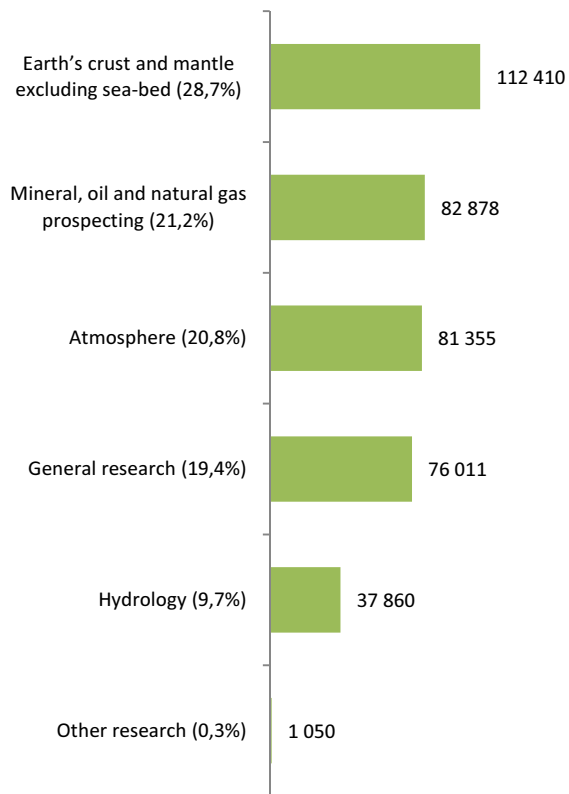
This objective includes research to explore the Earth's crust and mantle, seas, oceans and atmosphere, including the possibility of their use. It also includes research on climate and meteorology, polar exploration and hydrology.

- Public support given to this socio-economic objective for the period 2002–2004 increased from CZK 371 million in 2002 to CZK 429 million in 2004. In the period 2005–2007 there was stagnation, while in the years 2008 and 2009 there was an increase to CZK 420 million, CZK 429 million respectively. In 2010 the support allocated into this objective decreased sharply to CZK 392 million. The share of this objective in the total GBAORD in the period 2002–2010 ranged from 2-3%, with a tendency to stagnation in the last 6 years. The average annual growth reached only 0.7% in the period of 2002–2010.
- The breakdown by NABS1992 at the two-digit level (by SEO) shows that the objective of Earth's crust and mantle excluding sea-bed (SEO 0103) received the largest amount of financial support (CZK 112,410 thousand), which accounted for 28.7% of the total expenditure on the objective of SEO 01 in 2010. The proportion of Mineral, oil and natural gas prospecting (SEO 0101) reached 21.2% (CZK 82,878 thousand). Research of Atmosphere (SEO 0106) was supported with CZK 82,833 thousand (proportion 20.8 % of SEO 01). Due to the geological location of the CR, no research and development has been conducted in the exploration and exploitation of the sea-bed (SEO 0102) and the seas and oceans (SEO 0105).
- The period from 2005 to 2010 experienced the highest average annual growth of SEO 0106 – Atmosphere (an annual increase of 7.4%) and Earth's crust and mantle excluding sea-bed (SEO 0103) (3.7%). On the other hand, there was a decrease of 4.2% on average in General research in that period (SEO 0100) and in Mineral, oil and natural gas prospecting (SEO 0101) (decrease of 3.2%).
- The structure of the socio-economic objective SEO 01 – Exploration and exploitation of the Earth in the breakdown by type of public support for R&D is shown in Figure 2.1-3. SEO 0100 – General research (100%) and SEO 0101 – Geological exploration of minerals, oil and natural gas (97.5%) were dominated by institutional funding. In three objectives (Atmosphere; Hydrology and Earth's crust and mantle excluding sea-bed), there was a balanced proportion of institutional and targeted funding. Research under SEO 0109 – Other research on the exploration and exploitation of the Earth was carried out only through targeted funding.
- This socio-economic objective was supported especially through the budgets of the Academy of Sciences of the Czech Republic (CZK 218,424 thousand; the share of 55.8%) and the Ministry of Environment (CZK 103,236 thousand; 26.4%). Other significant contributors to research activities in this area include the Grant Agency of the Czech Republic (CZK 47,099; 12%) and the Ministry of Education, Youth and Sports (CZK 15,978 thousand; 4.1%). The smallest support was provided by Ministry of Culture (0.1%), the Ministry of Interior (0.8%) and the State Office for Nuclear Safety (0.9%) listed in Figure 2.1-4 under Others (CZK 6,827 thousand).

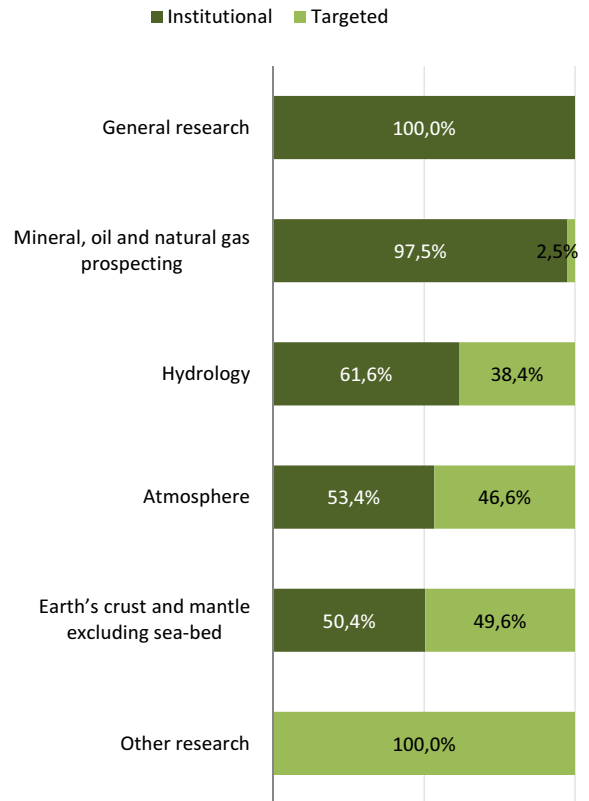
GRAPH 2.1-1: Exploration and exploitation of the Earth (SEO 01) in mil. CZK and as % of total GBAORD; 2002–2010



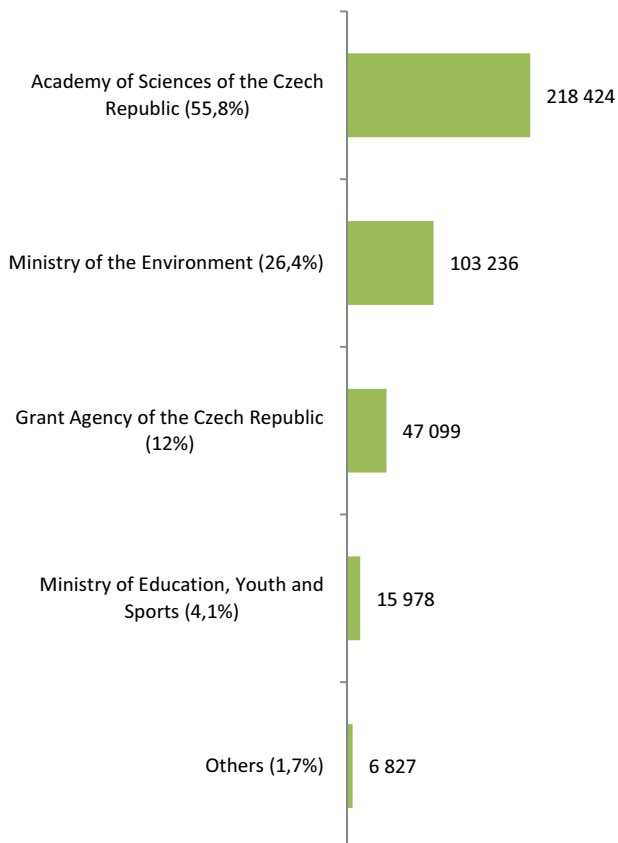
GRAPH 2.1-2: Exploration and exploitation of the Earth (SEO 01) – objectives by NABS1992 (% and CZK thousand); 2010



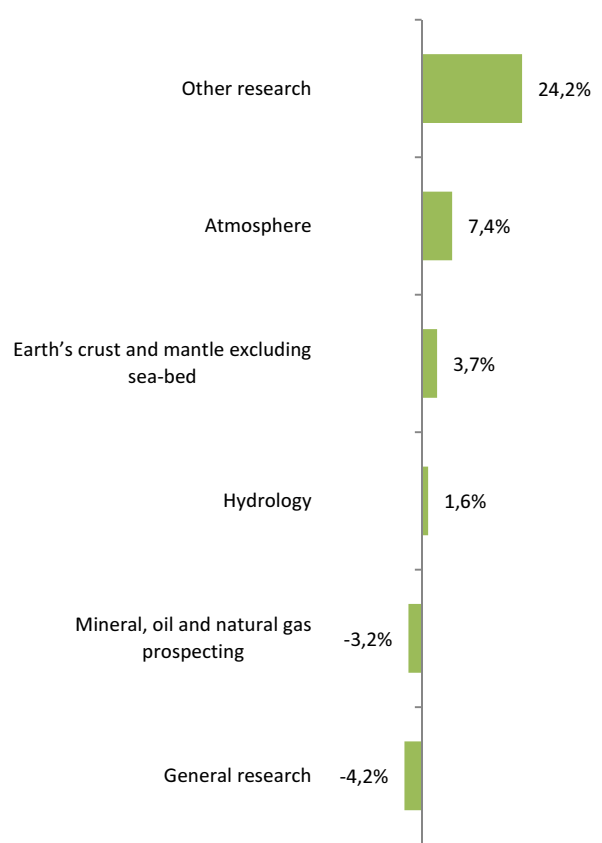
GRAPH 2.1-3: Exploration and exploitation of the Earth (SEO 01) – the structure by the type of funding; 2010



GRAPH 2.1-4: Exploration and exploitation of the Earth (SEO 01) – the support by providers (% and CZK thousand); 2010



GRAPH 2.1-5: Exploration and exploitation of the Earth (SEO 01) – the average annual growth rate; 2005–2010



NOTE: In graphs 2.1-2 and 2.1-4, the proportions of SEO 01 are in brackets.