

Standard revision of the calculation of price indices of market services

The purpose of revision is updating of the system of price indices especially due to accumulated changes in real described section. This updating is focus on selected files of the representatives and reporting units, weight structure, price base and the concept of calculation. Revision of price indices of market services is doing every 5 – 6 years.

During the year 2012 a complex standard revision of price indices in market services had taken place and since January 2013 was started the calculation on the structure of 2011 sales with the price base average 2011 = 100. The newly calculated indices were chained to the time series 2011 average = 100 in December 2012.

The advantage of chaining is the elimination of the conversion bridges, which were used formerly and the possibility of changes in the weight system in the period between the revisions.

Within some divisions of services included in CZ-CPA some of the services with the lowest amounts of sales in the domestic market in 2011 will be excluded:

H495	Transport services via pipeline
H51211	Freight air transport services
K651243	Agricultural production insurance
N7739	Rental of other machinery and equipment n.e.c
N773912	Rental and leasing services of containers

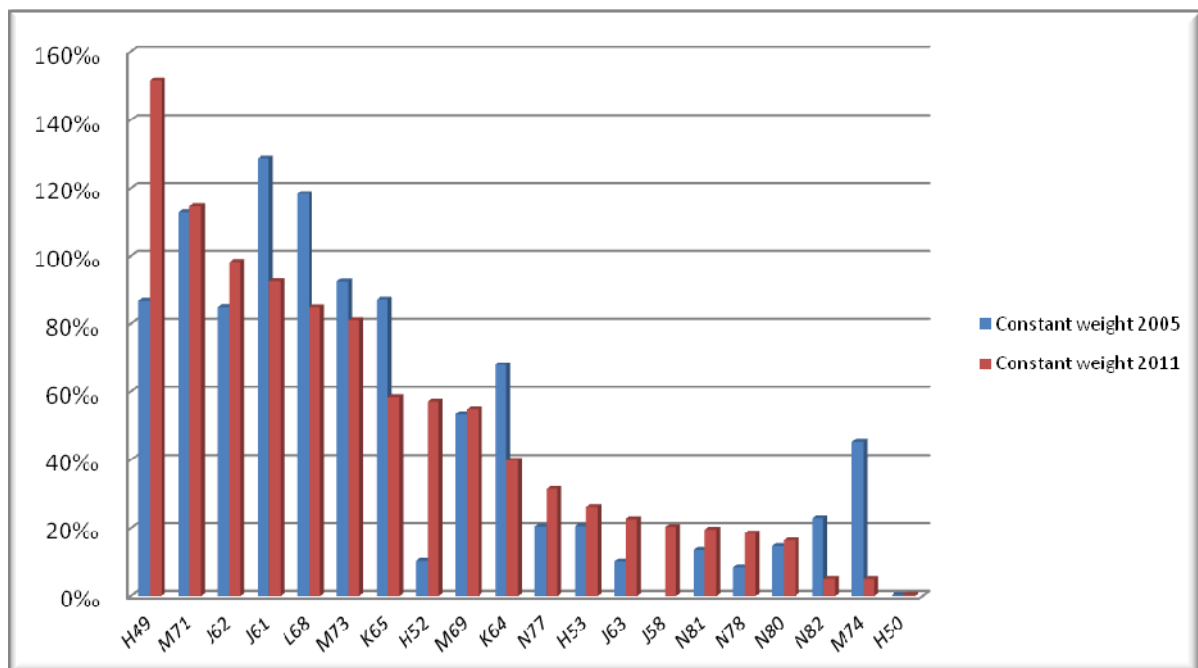
Set of published price indices will be extended of following groups of services:

H521	Warehousing and storage services
H522	Support services for transportation
H581	Publishing services of books, periodicals and other publishing services
M691	Legal services
M802	Security systems services

Table: The structure of the monitored sections of market services and their weight structure in years 2005 and 2011

Code	Name	Weights 2005 (‰)	Weights 2011 (‰)
	<u>TOTAL</u>	1000,000	1000,00
H49	Land transport services and transport	86,847	151,622
H50	Water transport services	0,329	0,403
H52	Warehousing and support services for transportation	10,260	57,229
H53	Postal and courier services	20,630	26,327
J58	Publishing services	-	20,370
J61	Telecommunications services	128,749	92,690
J62	Computer programming, consultancy and related services	85,088	98,325
J63	Information services	10,029	22,555
K64	Financial services, except instance and pension funding	67,993	39,884
K65	Insurance, reinsurance and pension funding services, except compulsory social security	87,174	58,450
L68	Real estate services	118,336	85,018
M69	Legal and accounting services	53,319	55,101
M71	Architectural and engineering services, technical testing and analysis	113,043	114,737
M73	Advertising and market research	92,625	81,075
M74	Other professional, scientific and technical services	45,273	5,179
N77	Rental and leasing services	20,579	31,444
N78	Employment services	8,413	18,439
N80	Security and investigation services	14,767	16,404
N81	Services to buildings and landscape	13,680	19,567
N82	Office administrative, office support and other business support services	22,865	5,182

Graph: Weight structure in years 2005 and 2011 (v %)



Changing of the weights in the compared periods was caused by changing the amount of production and also by changing in the concept of the coverage of selected services.

The history of revision after the year 1989

The first price indices of selected market services (Inland freight transport and sewerage) were calculated on the 1990 weights, with price and index base January 1990 = 100. These prices indices were calculated in January 1994.

After revision 1994, indices for the period 1995 – 2000 were calculated on the 1993 weights, with price and index base December 1993 and the derived index base 1994 average = 100 and 1995 average = 100.

After revision 2000, indices for the period 2001 – 2006 were calculated on the 1999 weights, with price and index base December 1999 = 100 and the derived index base 2000 average = 100.

After revision 2005, indices for the period 2007 – 2012 were calculated on the 2005 weights with price and index base December 2005 = 100.

During the year 2008 was changed the classification and since January 2009 are all price indices set up, calculated and published in CZ-CPA 2008 classification.

After revision 2012, indices for the period 2013 – 2017 are calculated on the 2011 weights with price and index base 2005 average = 100.

