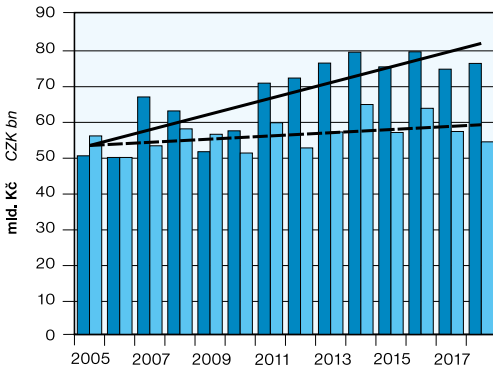
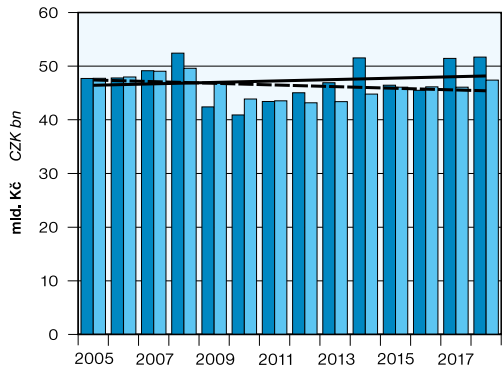


SOUHRNNÝ ZEMĚDĚLSKÝ ÚČET
 ECONOMIC ACCOUNTS FOR AGRICULTURE

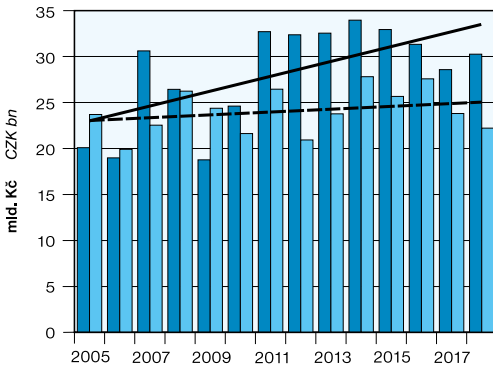
ROSTLINNÁ PRODUKCE
 CROP OUTPUT



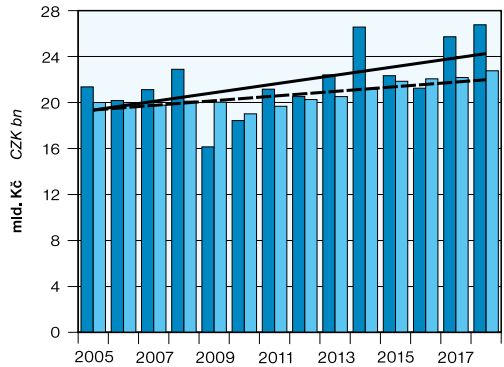
ŽIVOČIŠNÁ PRODUKCE
 ANIMAL OUTPUT



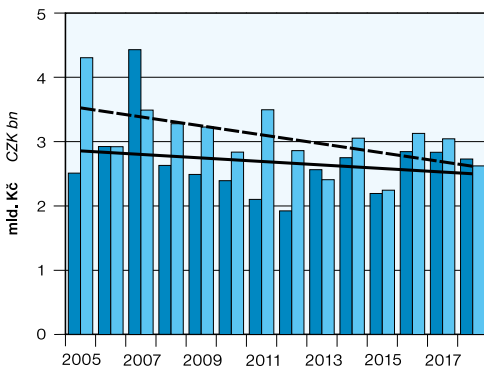
OBILOVINY
 CEREALS



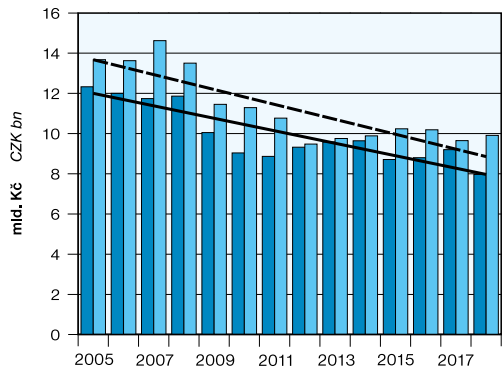
MLÉKO
 MILK



BRAMBORY (včetně sadbových)
 POTATOES (including seed ones)



PRASATA
 PIGS



■ BĚŽNÉ CENY CURRENT PRICES	■ STÁLÉ CENY ROKU 2000 CONSTANT PRICES OF 2000
— TREND VÝVOJE V BĚŽNÝCH CENÁCH TREND IN CURRENT PRICES	- - - TREND VÝVOJE VE STÁLÝCH CENÁCH TREND IN CONSTANT PRICES