

## ANALYSIS

13 August 2020

### International trade price indices development in the Q2 2020

In the Q2 2020, compared to the Q1 2020, export prices increased by 3.9% and import prices by 1.7%. The terms of trade reached the value of 102.2%. In the year-on-year (y-o-y) comparison, export prices increased by 2.6%, import prices decreased by 0.5%, and the terms of trade reached the value of 103.1% in the Q2 2020.

#### Quarter-on-quarter comparison

Export prices in the Q2 2020, compared to the Q1 2020, increased by 3.9%, quarter-on-quarter (q-o-q). Prices of 'machinery and transport equipment' increased by 5.2%, prices of both 'miscellaneous manufactured articles' and 'manufactured goods classified chiefly by material' increased the same by 4.7%. Only prices of 'mineral fuels, lubricants and related materials' decreased by 18.0% (especially petroleum products prices).

Import prices in the Q2 2020, compared to the Q1 2020, increased by 1.7%, q-o-q. The highest increase of prices was in 'crude materials, inedible, except fuels' by 5.7%, 'machinery and transport equipment' by 4.9%, 'manufactured goods classified chiefly by material' by 3.7%, and 'miscellaneous manufactured articles' by 3.3%. Only prices of 'mineral fuels, lubricants and related materials' recorded a decrease by 30.4% (primarily petroleum and petroleum products prices).

The terms of trade in the Q2 2020, compared to the Q1 2020, reached the value of 102.2%. The highest positive values of the terms of trade were reached by 'mineral fuels, lubricants and related materials' (117.8%), 'beverages and tobacco' (102.8%), and 'miscellaneous manufactured articles' (101.4%). Negative values of the terms of trade were recorded only for 'crude materials, inedible, except fuels' (97.8%) and 'chemicals and related products' (99.4%).

---

#### Information Services Unit – Headquarters

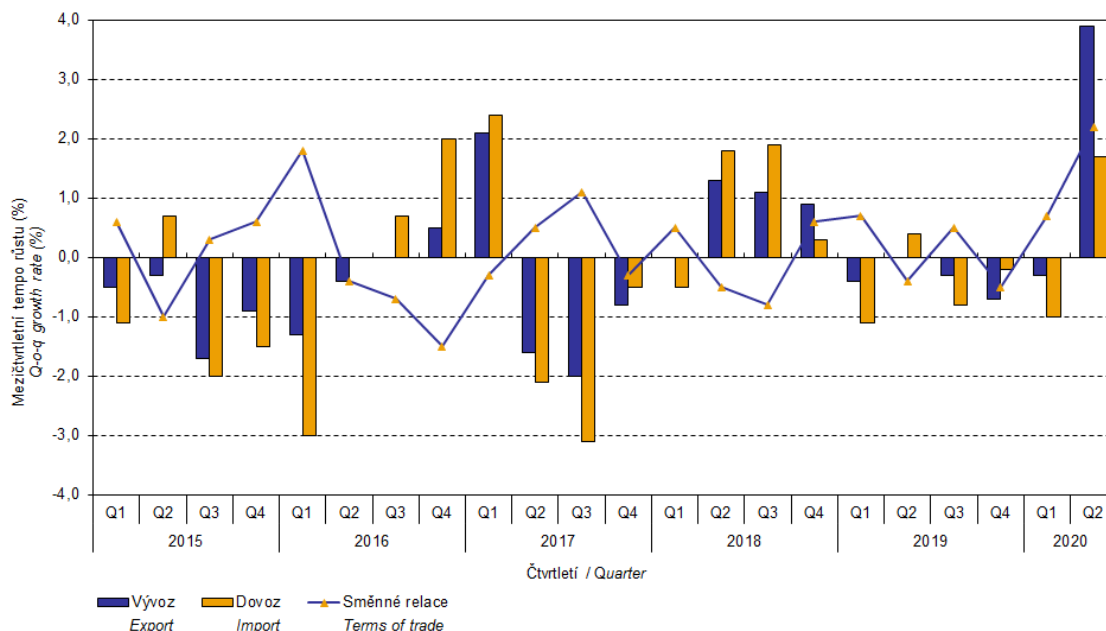
Are you interested in the latest data connected with inflation, GDP, population, wages and much more?

You can find them on pages of the Czech Statistical Office on the Internet: [www.czso.cz](http://www.czso.cz)

tel: +420 274 052 304, e-mail: [infoservis@czso.cz](mailto:infoservis@czso.cz)

## ANALYSIS

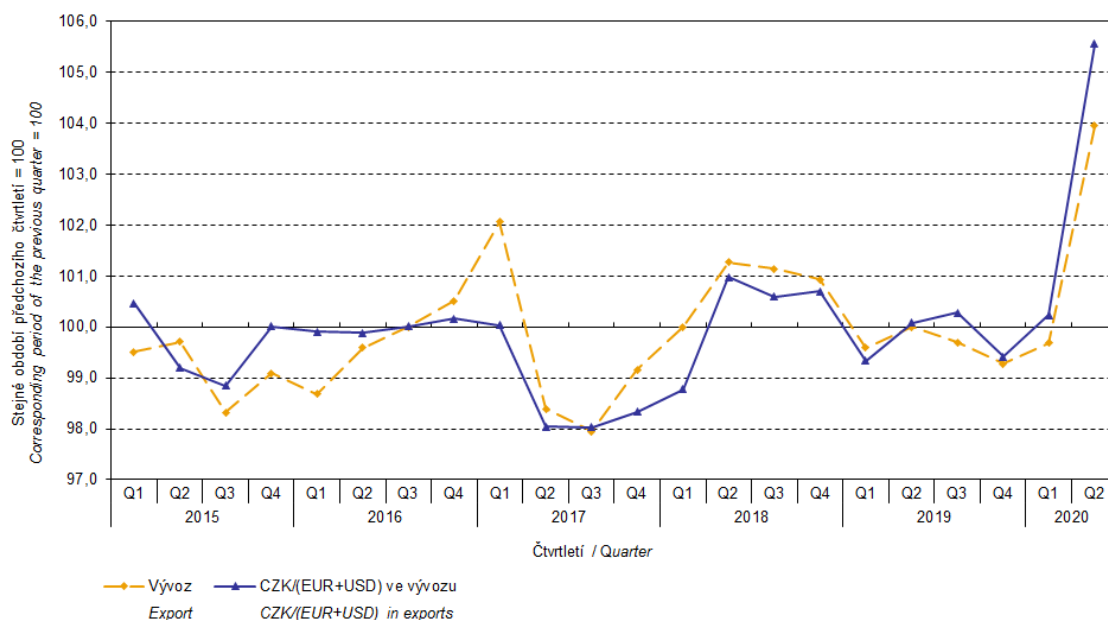
Graf č. 1 Vývoj indexů cen v zahraničním obchodě se zbožím mezičtvrtletně  
Chart No 1 Trend of price indices in international trade in goods, q-o-q



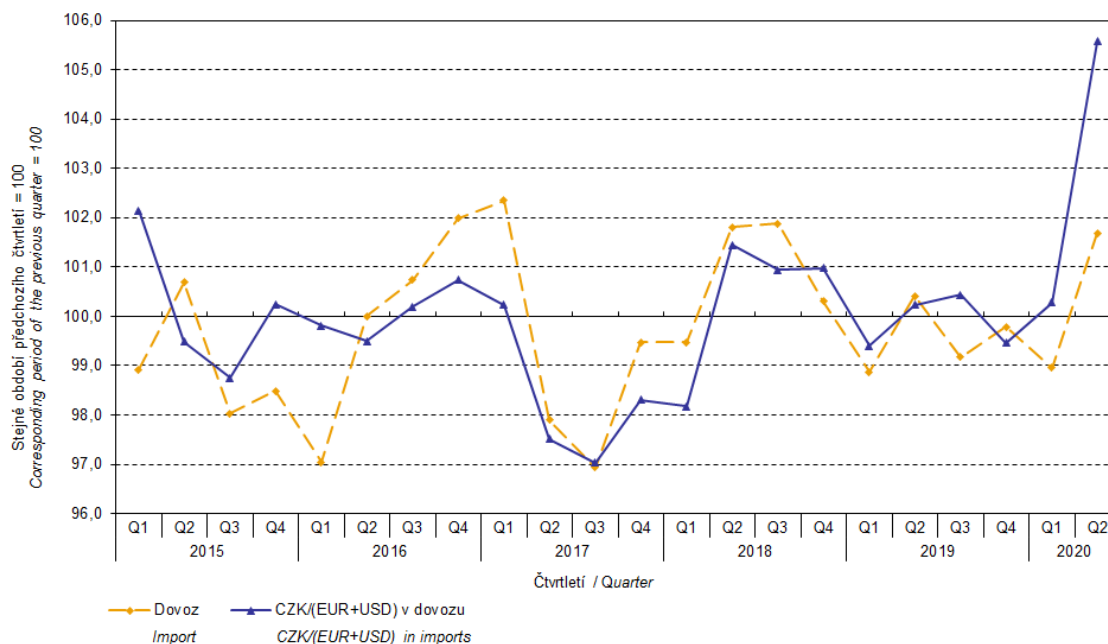
The international trade in goods (change of ownership) price development was also significantly affected by the CZK exchange rate to the major foreign currencies. The q-o-q exchange rate index includes two most important currencies from the Czech Republic's international trade point of view, i.e. EUR and USD. Q-o-q indices of the CZK exchange rate to these currencies were weighted by the weight, which pertains to those foreign currencies in the export price index and import price index, respectively.

## ANALYSIS

Graf č. 2 Indexy cen vývozu a vývoj kurzu mezičtvrtletně  
Chart No 2 Export price indices and exchange rate development, q-o-q



Graf č. 3 Indexy cen dovozu a vývoj kurzu mezičtvrtletně  
Chart No 3 Import price indices and exchange rate development, q-o-q



It is apparent from the Chart No 2 and Chart No 3 above that in both exports and imports, international trade in goods prices have a relation to exchange rate impacts. Contracts with

### Information Services Unit – Headquarters

Are you interested in the latest data connected with inflation, GDP, population, wages and much more?

You can find them on pages of the Czech Statistical Office on the Internet: [www.czso.cz](http://www.czso.cz)

tel: +420 274 052 304, e-mail: [infoservis@czso.cz](mailto:infoservis@czso.cz)

## ANALYSIS

foreign entities are usually concluded for a longer period and the longer the contract period is, the stronger the relation to exchange rates is.

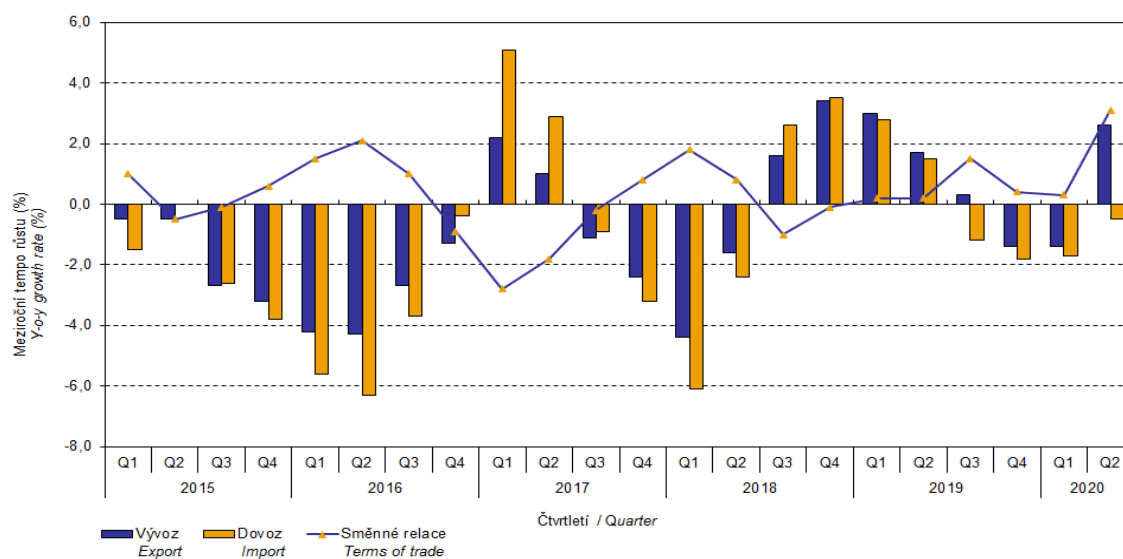
### Year-on-year comparison

In the Q2 2020, export prices increased by 2.6%, y-o-y (in the Q1 2020 they decreased by 1.4%, y-o-y). Prices of 'miscellaneous manufactured articles' increased by 5.7%, 'food and live animals' by 5.4%, and prices of 'machinery and transport equipment' by 4.9%. Conversely, decreasing were prices of 'mineral fuels, lubricants and related materials' by 26.5% (especially petroleum products prices), 'crude materials, inedible, except fuels' by 8.5%, and prices of 'chemicals and related products' by 1.4%.

Import prices in the Q2 2020 decreased by 0.5%, y-o-y (in the Q1 2020 they dropped by 1.7%, y-o-y). The deepest decreases were in prices of 'mineral fuels, lubricants and related materials' by 40.1% (primarily petroleum and petroleum products prices), prices of 'chemicals and related products' by 2.1%, and prices of 'crude materials, inedible, except fuels' by 1.4%. Prices of 'food and live animals' increased by 6.9%, prices of 'machinery and transport equipment' by 4.9%, and prices of 'miscellaneous manufactured articles' by 3.7%.

In the Q2 2020, the terms of trade reached the value of 103.1%, year-on-year (in the Q1 2020 they were at the value of 100.3%, y-o-y) and remained in positive values, see Chart No 4 below. The highest positive values of the terms of trade were reached by 'mineral fuels, lubricants and related materials' (122.7%), 'beverages and tobacco' (108.9%), and 'miscellaneous manufactured articles' (101.9%). Negative values of the terms of trade were recorded only for 'crude materials, inedible, except fuels' (92.8%) and 'food and live animals' (98.6%).

Graf č. 4 Vývoj indexů cen v zahraničním obchodě se zbožím mezinárodně  
Chart No 4 Trend of price indices in international trade in goods, y-o-y



### Information Services Unit – Headquarters

Are you interested in the latest data connected with inflation, GDP, population, wages and much more?

You can find them on pages of the Czech Statistical Office on the Internet: [www.czso.cz](http://www.czso.cz)

tel: +420 274 052 304, e-mail: [infoservis@czso.cz](mailto:infoservis@czso.cz)

## ANALYSIS

### International trade in goods price indices, year-on-year, adjusted for exchange rate influence

The Czech Statistical Office also carries out calculations of year-on-year international trade in goods price indices adjusted for effects of exchange rate. Prices in foreign currencies reported in the current month are **converted** to Czech crowns by the **exchange rate** of the same month **of the previous year**. Then they are used for the weighted mean calculation along with prices reported in CZK. The year-on-year adjusted price index for a month is then calculated the way that this exchange rate adjusted base price index of a month is related to the non-adjusted base price index of the corresponding month of the previous year. Similarly, adjusted quarter-on-quarter price indices are calculated since 2017. **Differences between adjusted and non-adjusted price indices may be considerable**; they are obvious in the Chart No 6 and Chart No 7, for example, in the Q2 2020.

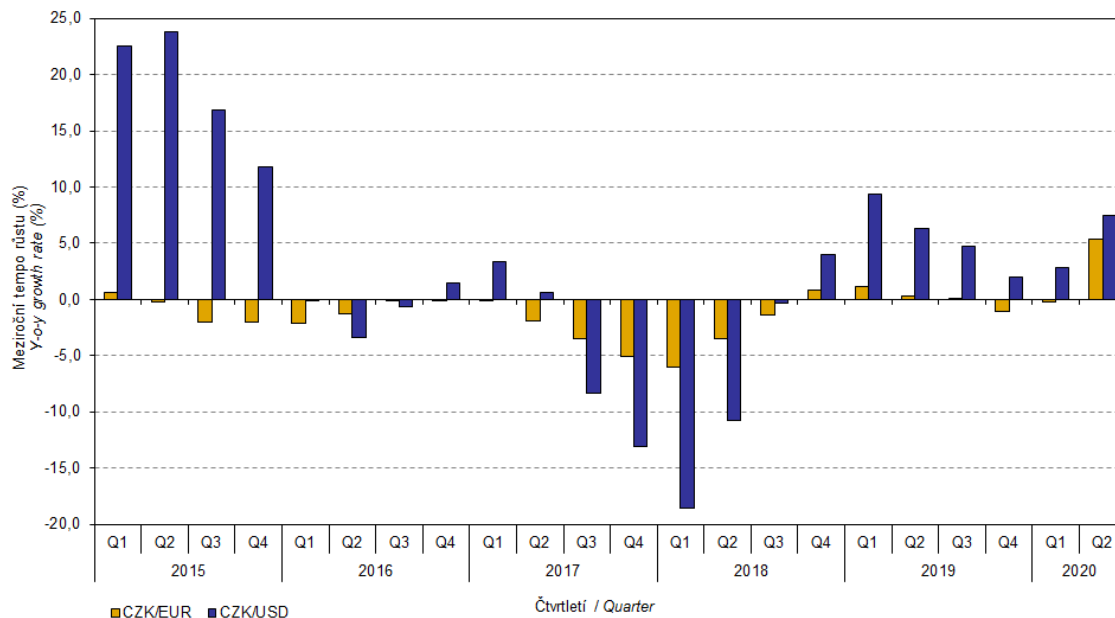
The method employed does not enable to make a 100% exchange rate adjustment because not all trade transactions made in foreign currencies are also reported in foreign currencies; the share does not exceed 30%. From the aforementioned it follows that, **at the full exchange rate adjustment, differences** between the price indices published and the exchange rate adjusted price indices **would** probably further **increase**.

The aforementioned exchange rate adjusted indices can be used also to form the exchange rate adjusted breakdown of price indices increments. Table 1 gives the **published and exchange rate adjusted breakdowns of increments** of export and import price indices, expanded by the most important two-digit code groups of the SITC 7. The breakdown illustrates well how many percentage points each of the groups “exchange rate contributed” to the index.

In general, it is true that the exchange rate effect decreases the value of price indices in international trade in goods if CZK is strengthening to foreign currencies in total. Conversely, the exchange rate effect pushes the price indices up if CZK is weakening to foreign currencies in total.

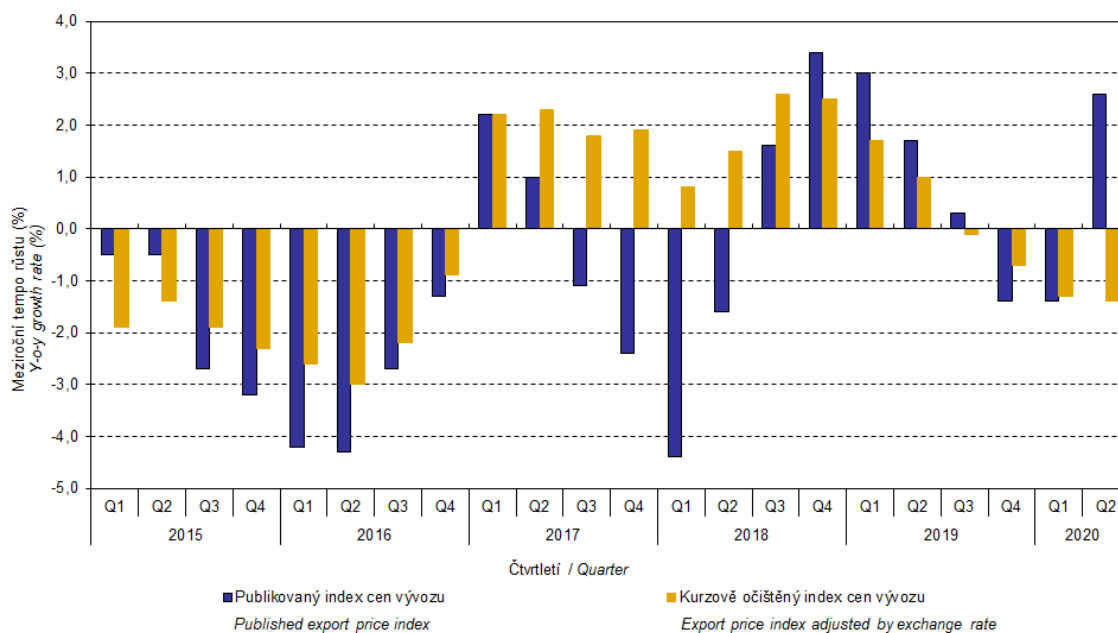
## ANALYSIS

Graf č. 5 Vývoj čtvrtletních kurzů meziročně  
Chart No 5 Quarterly exchange rates development, y-o-y



It is apparent from the Chart No 6 and Chart No 7 below how significant the exchange rate influence on the value of the export and import price indices was.

Graf č. 6 Vývoj indexů vývozních cen meziročně  
Chart No 6 Trend in export price indices, y-o-y



### Information Services Unit – Headquarters

Are you interested in the latest data connected with inflation, GDP, population, wages and much more?

You can find them on pages of the Czech Statistical Office on the Internet: [www.czso.cz](http://www.czso.cz)

tel: +420 274 052 304, e-mail: [infoservis@czso.cz](mailto:infoservis@czso.cz)

## ANALYSIS

Graf č. 7 Vývoj indexů dovozních cen meziročně  
Chart No 7 Trend in import price indices, y-o-y

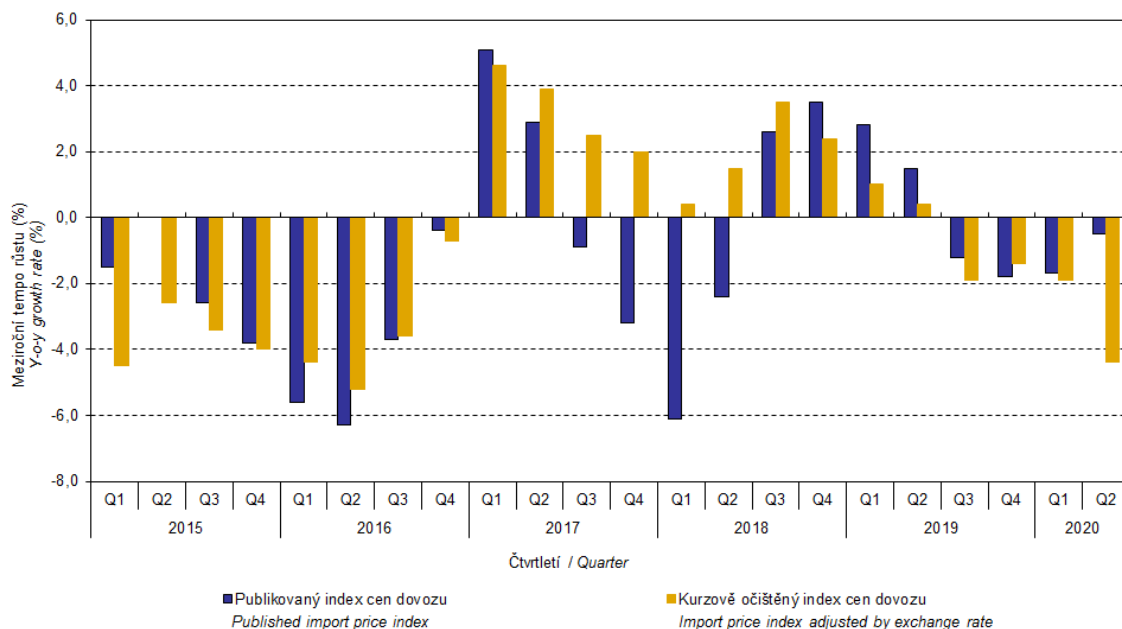
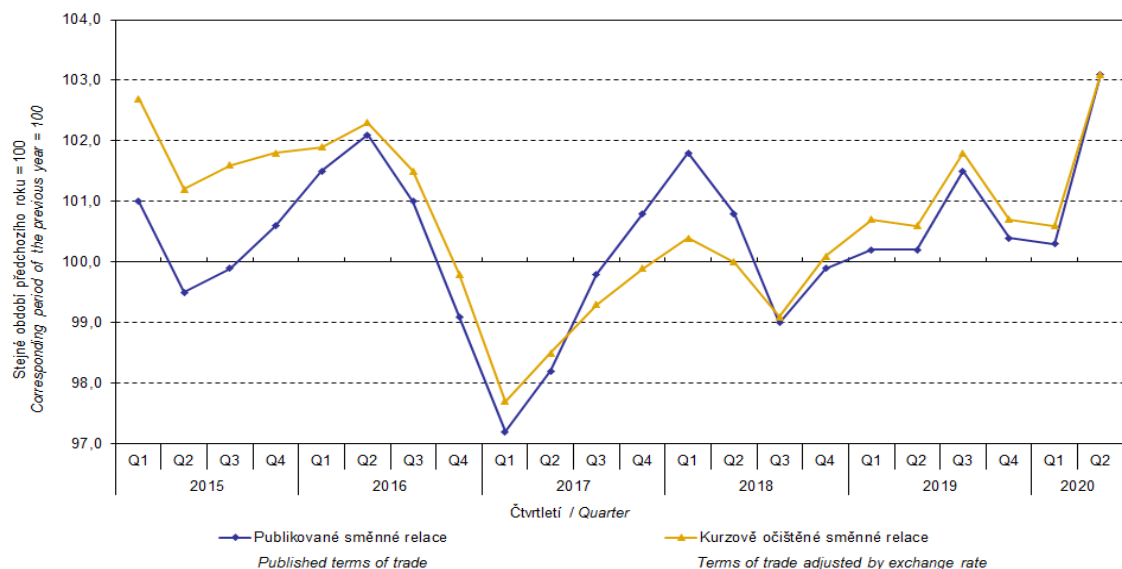


Chart No 8 shows the exchange rate influence on the value of the year-on-year terms of trade.

Graf č. 8 Směnné relace meziročně  
Chart No 8 Terms of trade, y-o-y



### Information Services Unit – Headquarters

Are you interested in the latest data connected with inflation, GDP, population, wages and much more?

You can find them on pages of the Czech Statistical Office on the Internet: [www.czso.cz](http://www.czso.cz)

tel: +420 274 052 304, e-mail: [infoservis@czso.cz](mailto:infoservis@czso.cz)

## ANALYSIS

Graf č.9 Publikované směnné relace a směnné relace s vyloučením minerálních paliv meziročně  
Chart No 9 Published terms of trade and terms of trade excluding mineral fuels, y-o-y

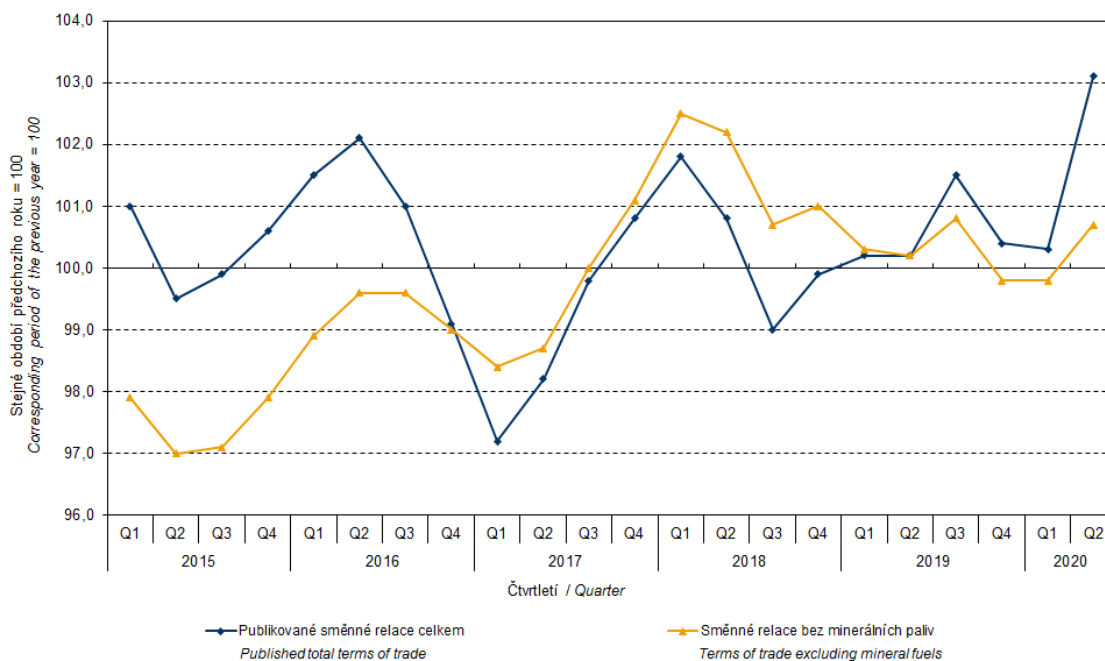


Chart No 9 shows the development of the value of the terms of trade when the group of 'mineral fuels, lubricants and related materials' is excluded. It can be observed in the chart that the effects of 'mineral fuels, lubricants and related materials' were increasing the overall value of the y-o-y terms of trade until the Q4 2016. In the Q1 2017, the situation changed and 'mineral fuels, lubricants and related materials' started to have a downward effect on the value of the terms of trade, which continued until the Q1 2019. In the Q2 2019, as an exception, 'mineral fuels, lubricants and related materials' had no effect on the terms of trade value. Since the Q3 2019, 'mineral fuels, lubricants and related materials' started to raise the terms of trade value again. Naturally, it is related to the world market price development, especially in crude oil. Import prices, which, compared to export prices, include a higher proportion of crude materials, respond in a more sensitive way to price turbulences. Therefore, when prices of crude materials go up, the terms of trade, as a rule, go down, and, conversely, when prices of crude materials fall, the terms of trade grow.

### Closing summary

In the Q2 2020, the exchange rate effect significantly increased the export price index and slackened the decrease of the import prices index, year-on-year. Export prices were increasing, y-o-y, while import prices were decreasing; therefore, the terms of trade reached positive values. After elimination of the exchange rate effect, the terms of trade were (as an exception) the same as the published terms of trade, i.e. also positive. Values free of the exchange rate effect correspond to the exchange rate adjusted indices, see Charts No 6, 7, and 8.

#### Information Services Unit – Headquarters

Are you interested in the latest data connected with inflation, GDP, population, wages and much more?

You can find them on pages of the Czech Statistical Office on the Internet: [www.czso.cz](http://www.czso.cz)

tel: +420 274 052 304, e-mail: [infoservis@czso.cz](mailto:infoservis@czso.cz)



## ANALYSIS

Tabulka 1 Rozklad přírůstků publikovaných a kurzově očištěných indexů cen vývozu a dovozu za 2. čtvrtletí 2020

Table 1 Breakdown of export and import price indices - published and exchange rate adjusted for Q2 2020

SITC	Název Name	Publikované Published					Očištěné o kurzové vlivy Exchange rate adjusted				
		Meziroční Year-on-year					Meziroční Year-on-year				
		Q1/2020	4/2020	5/2020	6/2020	Q2/2020	Q1/2020	4/2020	5/2020	6/2020	Q2/2020
<b>Rozklad přírůstků indexů vývozních cen</b> <i>Breakdown of export price indices</i>											
	<b>Celkem</b> <i>Total</i>	-1,4	3,1	2,8	2,0	2,6	-1,3	-1,5	-1,6	-1,1	-1,4
0	<b>Potraviny a živá zvířata</b> <i>Food and live animals</i>	0,1	0,3	0,2	0,2	0,2	0,1	0,2	0,1	0,1	0,1
1	<b>Nápoje a tabák</b> <i>Beverages and tobacco</i>	0,0	0,0	0,1	0,0	0,1	0,0	0,0	0,0	0,0	0,0
2	<b>Suroviny nepoživatelné, s výjimkou paliv</b> <i>Crude materials, inedible, except fuels</i>	-0,3	-0,2	-0,1	-0,2	-0,2	-0,3	-0,3	-0,2	-0,3	-0,3
3	<b>Minerální paliva, maziva a příbuzné materiály</b> <i>Mineral fuels, lubricants and related materials</i>	-0,4	-0,9	-1,0	-0,7	-0,9	-0,4	-1,0	-1,1	-0,7	-0,9
5	<b>Chemikálie a příbuzné výrobky</b> <i>Chemicals and related products</i>	-0,2	0,1	-0,1	-0,2	-0,1	-0,2	-0,3	-0,4	-0,4	-0,3
6	<b>Tržní výrobky tříděné hlavně podle materiálu</b> <i>Manufactured goods classified chiefly by material</i>	-0,7	0,4	0,4	0,1	0,3	-0,7	-0,4	-0,3	-0,4	-0,3
7	<b>Stroje a dopravní prostředky - z toho:</b> <i>Machinery and transport equipment - thereof:</i>	-0,1	2,7	2,7	2,3	2,6	0,0	0,1	0,2	0,5	0,2
74	Stroje a zařízení všeobecně užívané v průmyslu, j.n. <i>General industrial machinery and equipment, n.e.s.</i>	0,2	0,5	0,5	0,4	0,5	0,2	0,2	0,2	0,2	0,2
77	Elektrická zařízení, přístroje a spotřebiče, j.n. <i>Electrical machinery, apparatus and appliances, n.e.s.</i>	0,0	0,2	0,2	0,2	0,2	0,0	-0,1	-0,1	0,0	0,0
78	Silniční vozidla <i>Road vehicles (including air-cushion vehicles)</i>	0,0	1,4	1,4	1,2	1,3	0,1	0,2	0,2	0,3	0,2
8	<b>Průmyslové spotřební zboží</b> <i>Miscellaneous manufactured articles</i>	0,2	0,7	0,6	0,5	0,6	0,2	0,2	0,1	0,1	0,1
<b>Rozklad přírůstků indexů dovozních cen</b> <i>Breakdown of import price indices</i>											
	<b>Celkem</b> <i>Total</i>	-1,7	0,7	-0,7	-1,5	-0,5	-1,9	-4,1	-5,0	-4,3	-4,4
0	<b>Potraviny a živá zvířata</b> <i>Food and live animals</i>	0,4	0,6	0,4	0,3	0,4	0,4	0,3	0,2	0,2	0,2
1	<b>Nápoje a tabák</b> <i>Beverages and tobacco</i>	-0,1	0,0	0,0	0,0	0,0	0,0	0,0	0,0	0,0	0,0
2	<b>Suroviny nepoživatelné, s výjimkou paliv</b> <i>Crude materials, inedible, except fuels</i>	-0,1	0,0	0,0	-0,1	0,0	-0,1	-0,1	-0,1	-0,1	-0,1
3	<b>Minerální paliva, maziva a příbuzné materiály</b> <i>Mineral fuels, lubricants and related materials</i>	-0,9	-2,6	-3,5	-3,0	-3,0	-1,0	-2,9	-3,7	-3,1	-3,2
5	<b>Chemikálie a příbuzné výrobky</b> <i>Chemicals and related products</i>	-0,6	-0,1	-0,3	-0,4	-0,3	-0,6	-0,7	-0,8	-0,8	-0,7
6	<b>Tržní výrobky tříděné hlavně podle materiálu</b> <i>Manufactured goods classified chiefly by material</i>	-0,7	0,1	0,1	-0,1	0,0	-0,7	-0,8	-0,8	-0,7	-0,7
7	<b>Stroje a dopravní prostředky - z toho:</b> <i>Machinery and transport equipment - thereof:</i>	0,3	2,3	2,2	1,5	2,0	0,1	0,1	0,2	0,2	0,1
74	Stroje a zařízení všeobecně užívané v průmyslu, j.n. <i>General industrial machinery and equipment, n.e.s.</i>	0,1	0,5	0,5	0,4	0,4	0,1	0,1	0,1	0,1	0,1
75	Kancelářské stroje a zař. k automat. zpracování dat <i>Office machines and automatic data-processing machines</i>	0,1	0,4	0,3	0,2	0,3	0,1	0,1	0,1	0,1	0,1
77	Elektrická zařízení, přístroje a spotřebiče, j.n. <i>Electrical machinery, apparatus and appliances, n.e.s.</i>	0,1	0,5	0,4	0,2	0,4	0,1	0,0	0,0	-0,1	0,0
78	Silniční vozidla <i>Road vehicles (including air-cushion vehicles)</i>	0,2	0,6	0,6	0,5	0,6	0,2	0,2	0,2	0,2	0,2
8	<b>Průmyslové spotřební zboží</b> <i>Miscellaneous manufactured articles</i>	0,0	0,4	0,4	0,3	0,4	0,0	0,0	0,0	0,0	0,0

### Information Services Unit – Headquarters

Are you interested in the latest data connected with inflation, GDP, population, wages and much more?

You can find them on pages of the Czech Statistical Office on the Internet: [www.czso.cz](http://www.czso.cz)

tel: +420 274 052 304, e-mail: [infoservis@czso.cz](mailto:infoservis@czso.cz)

## ANALYSIS

The closing table gives published **non-adjusted** international trade in goods price indices.

Tabulka 2 Indexy cen vývozu a dovozu ve 2. čtvrtletí 2020  
Table 2 Export and import price indices in Q2 2020

SITC	Název Name	Stejně období předchozího roku = 100 Corresponding period of the previous year = 100				
		Q1/2020	4/2020	5/2020	6/2020	Q2/2020
<b>Indexy vývozních cen</b> Export price indices						
	<b>Celkem</b> Total	98,6	103,1	102,8	102,0	102,6
0	<b>Potraviny a živá zvířata</b> Food and live animals	101,2	106,4	105,5	104,1	105,4
1	<b>Nápoje a tabák</b> Beverages and tobacco	102,7	109,3	107,7	106,9	108,0
2	<b>Suroviny nepoživatelné, s výjimkou paliv</b> Crude materials, inedible, except fuels	86,7	90,2	93,0	91,5	91,5
3	<b>Minerální paliva, maziva a příbuzné materiály</b> Mineral fuels, lubricants and related materials	88,3	71,4	69,9	79,4	73,5
5	<b>Chemikálie a příbuzné výrobky</b> Chemicals and related products	97,7	100,9	98,2	96,7	98,6
6	<b>Tržní výrobky tříděné hlavně podle materiálu</b> Manufactured goods classified chiefly by material	96,5	102,1	102,2	100,5	101,6
7	<b>Stroje a dopravní prostředky</b> Machinery and transport equipment	99,9	105,2	105,2	104,3	104,9
74	Stroje a zařízení všeobecně užívané v průmyslu, j.n. General industrial machinery and equipment, n.e.s.	102,2	107,5	107,3	105,8	106,9
77	Elektrická zařízení, přístroje a spotřebiče, j.n. Electrical machinery, apparatus and appliances, n.e.s.	100,5	102,8	102,9	102,8	102,8
78	Silniční vozidla Road vehicles (including air-cushion vehicles)	100,1	106,0	105,9	104,9	105,6
8	<b>Průmyslové spotřební zboží</b> Miscellaneous manufactured articles	101,7	107,0	105,8	104,2	105,7
<b>Indexy dovozních cen</b> Import price indices						
	<b>Celkem</b> Total	98,3	100,7	99,3	98,5	99,5
0	<b>Potraviny a živá zvířata</b> Food and live animals	106,9	109,1	106,9	104,6	106,9
1	<b>Nápoje a tabák</b> Beverages and tobacco	95,7	100,5	98,7	98,5	99,2
2	<b>Suroviny nepoživatelné, s výjimkou paliv</b> Crude materials, inedible, except fuels	95,6	100,8	98,8	96,1	98,6
3	<b>Minerální paliva, maziva a příbuzné materiály</b> Mineral fuels, lubricants and related materials	87,5	66,0	55,1	58,5	59,9
5	<b>Chemikálie a příbuzné výrobky</b> Chemicals and related products	95,2	99,1	98,0	96,6	97,9
6	<b>Tržní výrobky tříděné hlavně podle materiálu</b> Manufactured goods classified chiefly by material	96,4	100,6	100,4	99,5	100,2
7	<b>Stroje a dopravní prostředky</b> Machinery and transport equipment	100,7	105,5	105,4	103,8	104,9
74	Stroje a zařízení všeobecně užívané v průmyslu, j.n. General industrial machinery and equipment, n.e.s.	101,4	108,3	107,5	106,4	107,4
75	Kancelářské stroje a zař. k automat. zpracování dat Office machines and automatic data-processing machines	102,8	109,5	107,8	105,7	107,6
77	Elektrická zařízení, přístroje a spotřebiče, j.n. Electrical machinery, apparatus and appliances, n.e.s.	101,4	104,9	104,3	102,4	103,9
78	Silniční vozidla Road vehicles (including air-cushion vehicles)	101,5	105,9	105,5	104,9	105,4
8	<b>Průmyslové spotřební zboží</b> Miscellaneous manufactured articles	99,9	104,3	104,2	102,5	103,7

Note: In tables and charts, the publication uses the Czech decimal comma, instead of the English decimal point, as decimal separator for internal reasons.

Elaborated by: Vladimír Klimeš, Prices Statistics Department

phone number: (+420) 274 054 102, e-mail: [vladimir.klimes@czso.cz](mailto:vladimir.klimes@czso.cz)

### Information Services Unit – Headquarters

Are you interested in the latest data connected with inflation, GDP, population, wages and much more?

You can find them on pages of the Czech Statistical Office on the Internet: [www.czso.cz](http://www.czso.cz)

tel: +420 274 052 304, e-mail: [infoservis@czso.cz](mailto:infoservis@czso.cz)